

**SOLD STC**

**£244,995 Freehold**



# 62 Greenway, Bishops Lydeard, Taunton, Somerset, TA4 3BZ

**£244,995  
Freehold**

- Spacious Three Bedroom Terraced House
- Solar Panels
- Excellent Condition Throughout
- Two Reception Rooms
- Generous Rear Garden with Shed
- Peaceful Location
- No Onward Chain





## PROPERTY DESCRIPTION

Newton King are delighted to offer the market with NO ONWARD CHAIN, this spacious three bedroom terraced house situated in a peaceful position within Bishops Lydeard. The property is offered in excellent condition throughout and benefits from a large conservatory/extension and solar panels, which are owned outright and generate in the region of £780-£1000 per year (Weather permitting).

In brief the property comprises; Entrance hall, good sized living room (18'1 x 10'0) with wood burner, spacious kitchen (18'1 x 12'0) with plenty of storage units & integrated hob and oven, large conservatory/reception room (21'11 x 9'0), bedroom one (12'0 x 12'0), bedroom two (10'0 x 7'7), bedroom three (10'6 x 10'0), family bathroom (6'1 x 5'0), separate toilet (7'0 x 2'7).

Outside to the rear, there is a generous lawn with decking area and shed providing ample storage.

Council Tax Band B, EPC rating C.

Please contact Newton King between the hours of 9am-6pm to arrange a fully accompanied viewing.





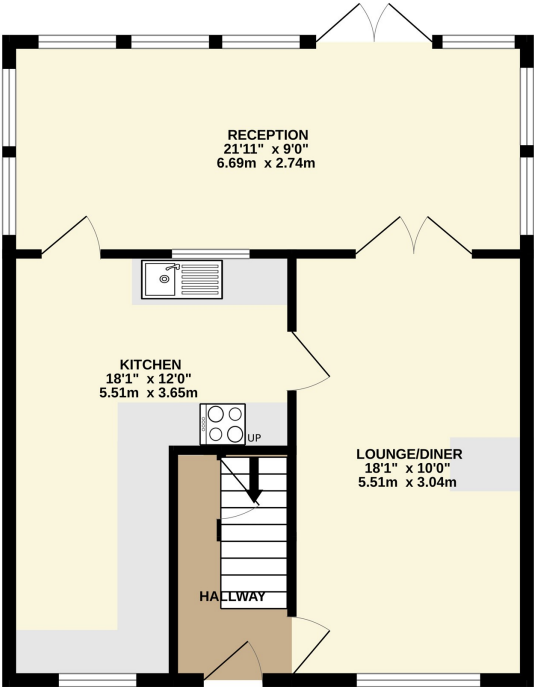




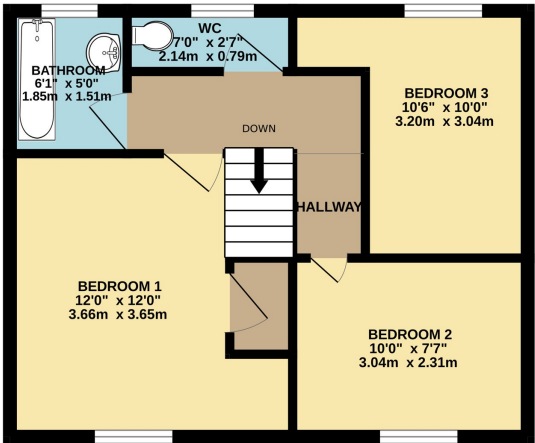
FLOORPLAN & EPC



GROUND FLOOR  
595 sq.ft. (55.2 sq.m.) approx.



1ST FLOOR  
397 sq.ft. (36.9 sq.m.) approx.



TOTAL FLOOR AREA : 992 sq.ft. (92.1 sq.m.) approx.

Whilst every attempt has been made to ensure the accuracy of the floorplan contained here, measurements of doors, windows, rooms and any other items are approximate and no responsibility is taken for any error, omission or mis-statement. This plan is for illustrative purposes only and should be used as such by any prospective purchaser. The services, systems and appliances shown have not been tested and no guarantee as to their operability or efficiency can be given.

Made with Metropix ©2025

