



Tel: 01242 676767

www.cotswoldestateagents.co.uk

41a Church Road, Bishops Cleeve, Cheltenham, GL52 8LP

12, Meade King Grove
Woodmancote GL52 9UD

£480,000



FOR SALE

Set on generous corner plot within the highly desirable area of Woodmancote is this spacious stone built, three bedroom detached bungalow. The property offers comfortable well planned living accommodation featuring large lounge/dining room, fitted kitchen with built-in and integrated appliances, modern shower room and three good sized bedrooms with built-in wardrobes. To the exterior is a driveway offering ample parking for four vehicles leading to a detached garage. The rear garden is a generous size being enclosed with wooden panel fencing with patio, being laid to lawn and well stocked with various flower and shrub borders. *NO ONWARD CHAIN*

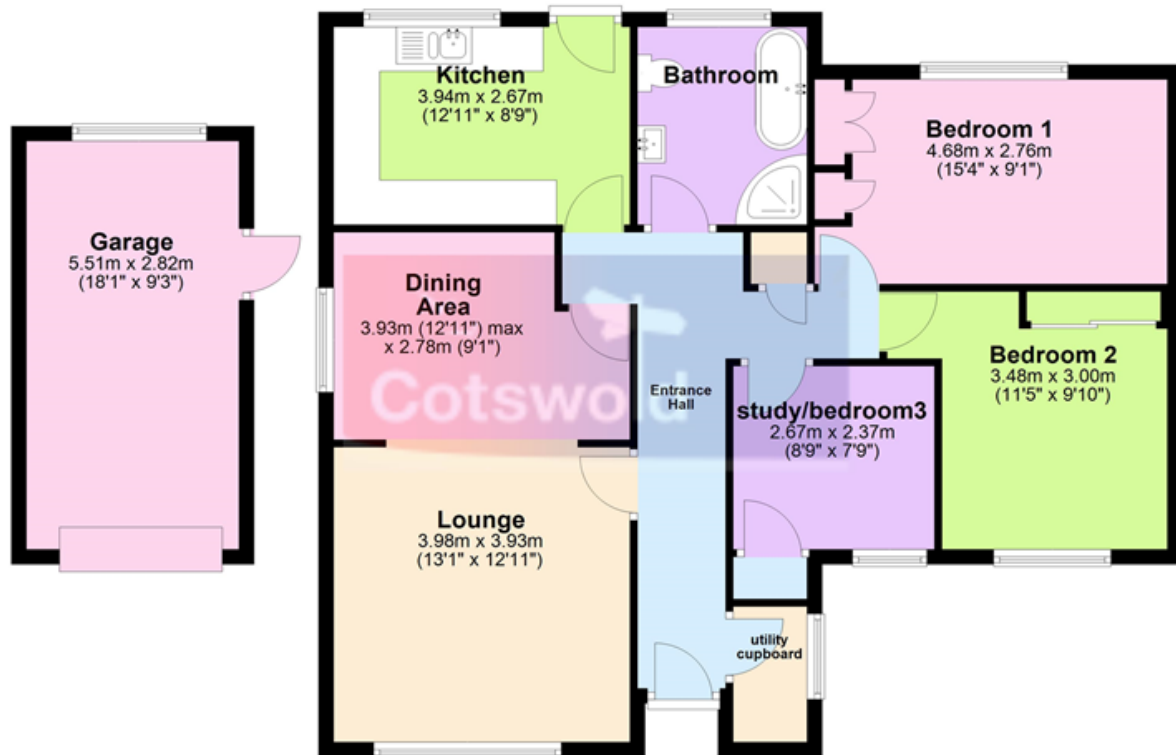






Ground Floor

Approx. 101.2 sq. metres (1089.8 sq. feet)



Total area: approx. 101.2 sq. metres (1089.8 sq. feet)

Energy Efficiency Rating		
	Current	Potential
Very energy efficient - lower running costs		
(92+) A		
(81-91) B		85
(69-80) C	72	
(55-68) D		
(39-54) E		
(21-38) F		
(1-20) G		
Not energy efficient - higher running costs		
England, Scotland & Wales		
EU Directive 2002/91/EC		