



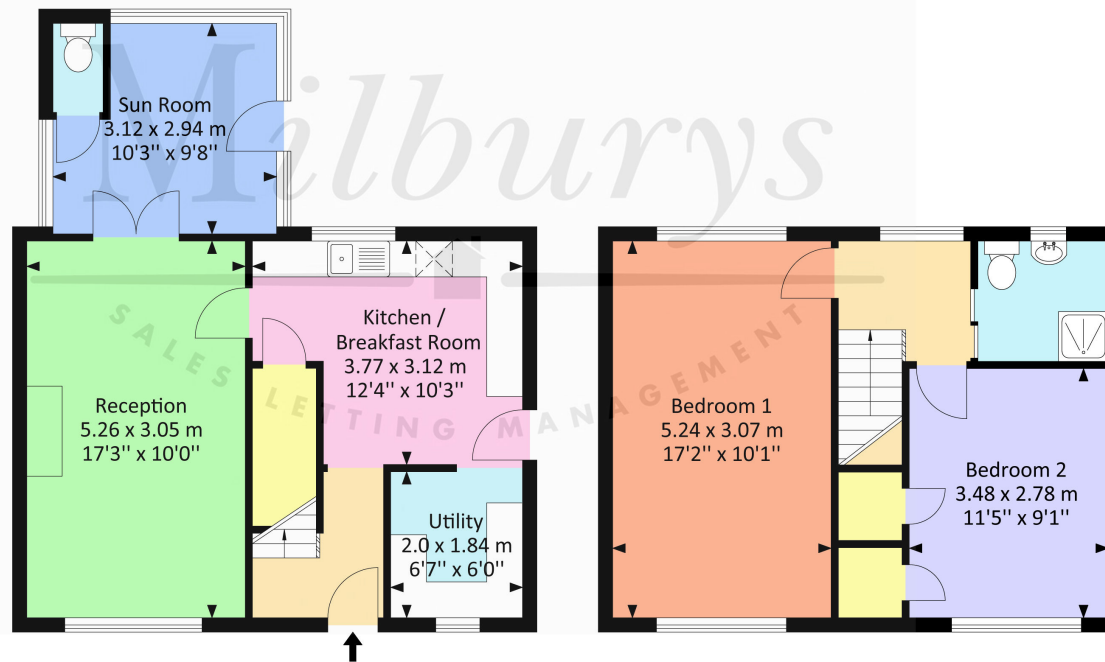
60 Pitman Place, Wotton-Under-Edge, GL127LB

Internal Area (Approx)

82.30 Sq.M / 886.20 Sq.Ft

For identification only. Not to scale.

Produced by Energy Plus



Ground Floor

First Floor



60 Pitman Place, Wotton-under-Edge, Gloucestershire GL12 7LB

An opportunity to make your mark! An ideal first-time buyers home is now available for sale in the popular market town of Wotton under Edge: close to local amenities, Wotton High Street and within catchment of fantastic schools. This spacious two bedroom end of terrace property is in need of an update and refurbishment so offers a great chance to create something bespoke to your taste. On entering inside, you are greeted by an open hallway with stairs to the first floor. Straight ahead you will find the kitchen, with a great outlook over the garden, a useful adjoining utility area plus access to the outside. From the kitchen you enter into a generous sized living room, complete with woodburner. Double doors lead onto the the sun room complete with separate cloakroom and doors to the garden. Head upstairs you will find the family bathroom along with two double bedrooms. The principal bedroom benefits from a dual aspect and views over the garden whilst bedroom two is complete with an additional storage cupboard. Outside there is large garden, predominately laid to gravel with lawn to the rear, plus there are raised beds and patio seating area. A superb garden! To the front there is off-street driveway parking and side access. This property is offered with no onward chain- it is readily available for viewings and perfect for an investment purchaser/first time buyer. Call the Wotton office to book your viewing today!

Situation

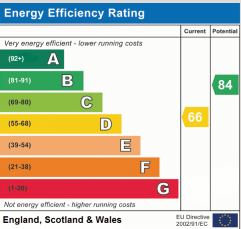
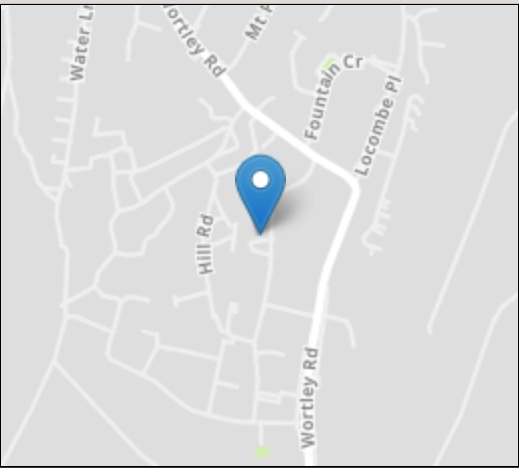
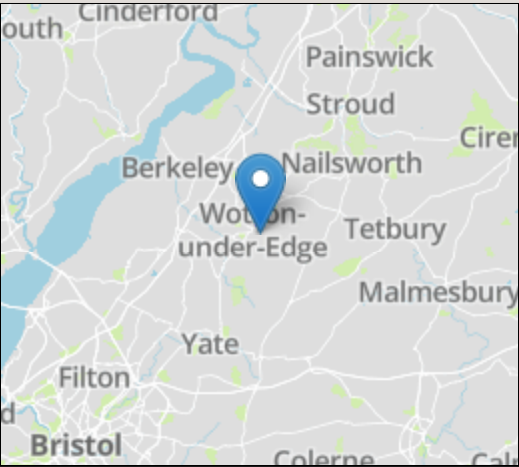
This charming Cotswold market town enjoys a vibrant High Street with an eclectic mix of independent shops and cafes, further complemented by two mini-supermarkets plus its own independent cinema (dating back to 1911) which shows current and arthouse films with digital and 3D equipment! Wotton-under-Edge is situated amidst beautiful countryside on the edge of the Cotswold escarpment, ideal for families and for those wanting to be part of a thriving community. The M5 Junction 14 is approx. 5.1miles for commuters to Bristol, Gloucester and Cheltenham whilst Tetbury is 10.1 miles. For rail links to Bristol and Gloucester Cam and Dursley Railway Station is approx. 7 miles away. There are two Primary Schools centrally located in Wotton plus you will find more in the surrounding villages of Charfield, Tortworth and Hillesley. For secondary education the reputable Katharine Lady Berkeley is situated on the outskirts of the town in nearby Kingswood so still walking distance. Outdoor pursuits include exploring the Cotswold Way which runs directly through the town, the local Golf club, a refurbished Open Air Pool Swimming Pool (seasonal) with a retractable enclosure and for those with a flair for antiques and collectables, why not visit the Wotton Auction Rooms

Property Highlights, Accommodation & Services

- First Time Buyer/Investment Opportunity
- No Onward Chain
- Kitchen With Adjoining Utility Area
- Generous Sized Living Room With Woodburner
- Downstairs Cloakroom
- Conservatory With Doors To The Garden
- Larger Than Average Garden With Side Access
- Sun Room With Double Doors To Garden
- Driveway Parking
- Stroud District Council - Band B

Directions

On entering Wotton-under-Edge from the direction of Charfield and on the B4058, proceed to the end of Bear Street, then turn right into Old Town. Drop down to the War Memorial round-about, taking the second exit - then right into Dyers Brook which runs into Wortley Road. Head along this road, turning right into Pitman Place (just after the convenience store). Number 60 can be found on your right handside as you begin



IMPORTANT NOTICE Milburys Estate Agents Ltd, their clients and any joint agents give notice that they have not tested any apparatus, equipment, fixtures, fittings, heating systems, drains or services and so cannot verify they are in working order or fit for their purpose. Interested parties are advised to obtain verification from their surveyor or relevant contractor. Statements pertaining to tenure are also given in good faith and should be verified by your legal representative. Digital images may, on occasion, include the use of a wide angle lens. Please ask if you have any queries about any of the images shown, prior to viewing. Where provided, floor plans are shown purely as an indication of layout. They are not scale drawings and should not be treated as such. Complete listings and full details of all our properties (both for sale and to let) are available at www.milburys.co.uk



