



SOLE
AGENT

Flat 4

15 Allez Street | St Peter Port | GY11NG

This spacious one bedroom first floor flat is situated in a convenient location within walking distance of the town centre. Accommodation comprises: entrance hall, lounge/diner, kitchen, bedroom and a bathroom. Good on-street parking. Regret no smokers, pets or children. Available 1st October 2025.

1 BEDROOM

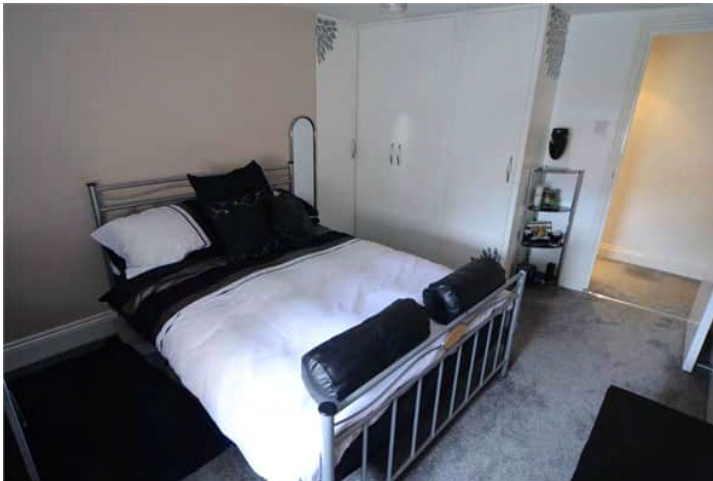
1 BATHROOM

1 RECEPTION

£1,500 pcm

Shields
& Rutland

PHOTOS



SPECIFICATIONS



Kitchen

2.82m x 2.54m (9' 3" x 8' 4")

Lounge/Diner

4.95m x 3.27m (16' 3" x 10' 9")

Bedroom

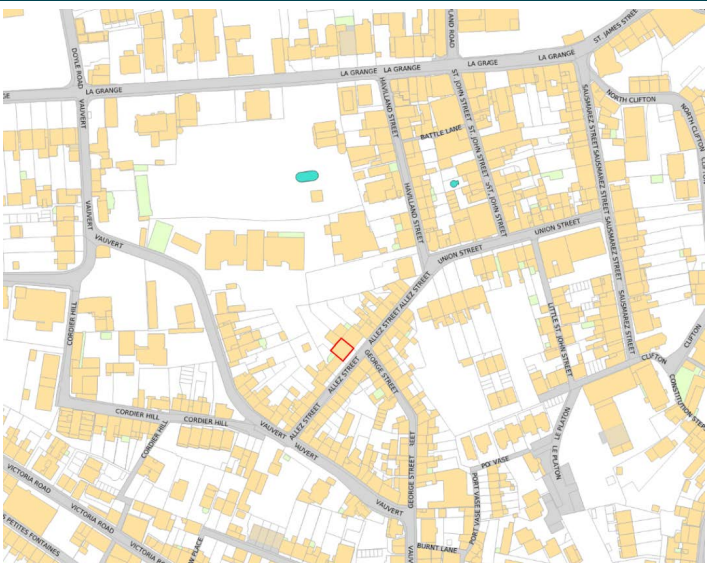
3.78m x 2.97m (12' 5" x 9' 9")

Shower Room

3.93m x 1.37m (12' 11" x 4' 6")

Garden

The apartment benefits from a large communal garden situated to the rear.



PRICE INCLUDES

Curtains, carpets and light fittings

SPECIAL FEATURES

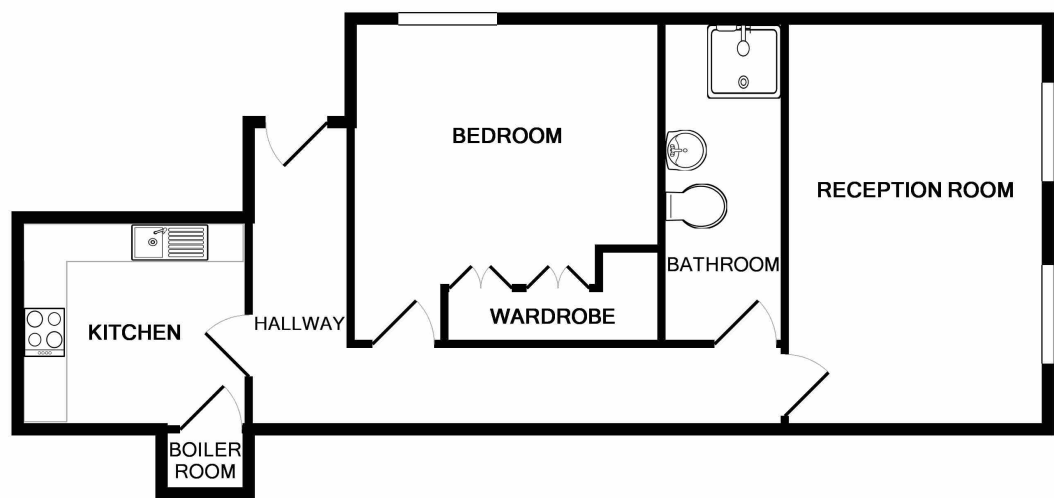
- Double glazing
- Spacious accommodation
- Convenient location
- Communal garden

SERVICES

Mains water, electricity and drainage.

APPLIANCES INCLUDED

- Fridge/freezer
- Washing machine
- Four ring hob
- Extractor fan
- Oven



FLAT ALLEZ STREET

Whilst every attempt has been made to ensure the accuracy of the floor plan contained here, measurements of doors, windows, rooms and any other items are approximate and no responsibility is taken for any error, omission, or mis-statement. This plan is for illustrative purposes only and should be used as such by any prospective purchaser. The services, systems and appliances shown have not been tested and no guarantee as to their operability or efficiency can be given
Made with Metropix ©2015