



**11 The Heathers, Staines-upon-Thames, Surrey. TW19 7AP.**

**3 Bedroom Terraced House - £390,000 Freehold**

# 11 The Heathers, Staines-upon-Thames, Surrey. TW19 7AP.

01784 451458

## 3 Bedroom Terraced House - £390,000 Freehold

**WELL PRESENTED & SPACIOUS THREE BEDROOM PROPERTY SITUATED WITHIN THIS MUCH SOUGHT AFTER CLOSE IDEALLY LOCATED FOR BOTH STAINES & ASHFORD TOWN CENTRES AND WITH EASY ACCESS TO LOCAL MOTORWAY NETWORKS & HEATHROW AIRPORT. The property benefits from a spacious lounge/diner, conservatory, three well-proportioned bedrooms, modern white bathroom suite, secluded rear garden and two allocated parking bays. Viewings Highly Recommended!**

### Key Features

**EASY ACCESS TO LOCAL MOTORWAY NETWORKS & HEATHROW AIRPORT**

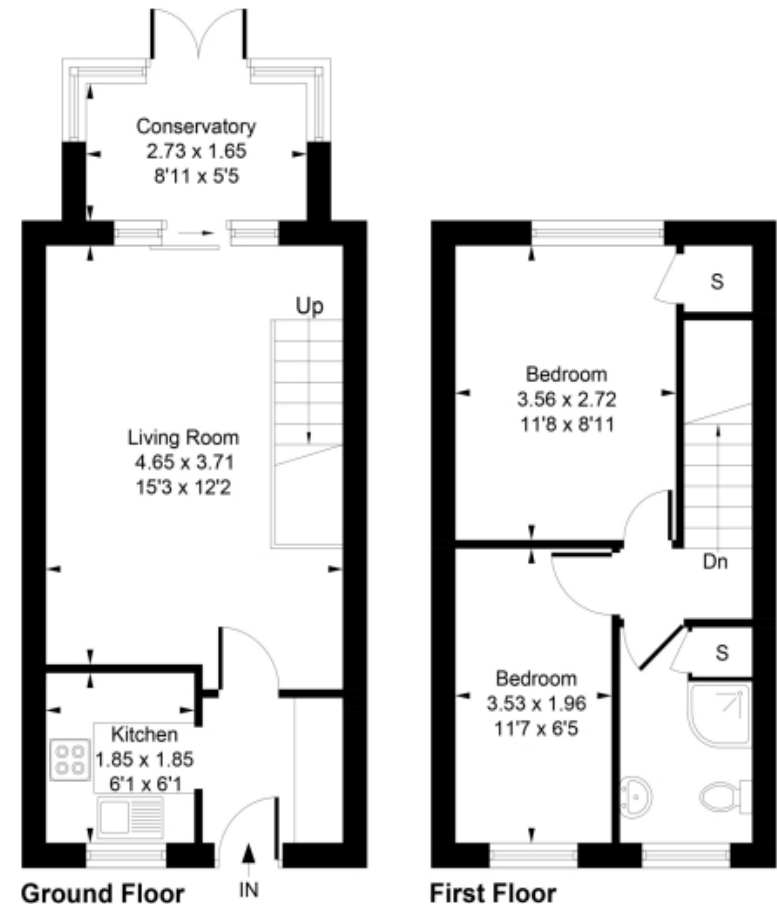
**CLOSE TO BOTH STAINES & ASHFORD TOWN CENTRES**

**WELL PRESENTED THROUGHOUT**

**TWO ALLOCATED PARKING BAYS**

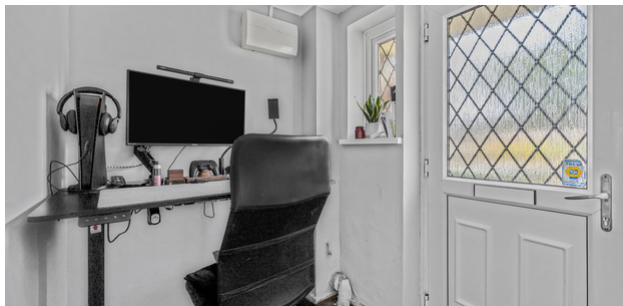
**SECLUDED REAR GARDEN**

Approximate Gross Internal Area  
51.9 sq m / 559 sq ft



**GREGORY BROWN**  
RESIDENTIAL SALES & LETTINGS











# 11 The Heathers, Staines-upon-Thames, Surrey. TW19 7AP.

[gregory-brown.co.uk](http://gregory-brown.co.uk)



Tenure **Freehold**  
Lease Term  
Ground Rent  
Service Charge  
Local Authority  
Council Tax

We have prepared these property particulars as a general guide to a broad description of the property. They are not intended to constitute part of an offer or contract. We have not carried out a structural survey and the services, appliances and specific fittings have not been tested. All photographs, measurements, floorplans and distances referred to are given as a guide only and should not be relied upon for the purchase of carpets or any other fixtures or fittings. Lease details, service charges and ground rents (where applicable) and council tax are given as a guide only and should be checked and confirmed by your solicitor prior to exchange of contracts. The copyright of all details, photographs and floorplans remain exclusive to Gregory Brown.

