

TO LET

£925 pcm



Meridian Tower, Maritime Quarter, Swansea, West Glamorgan SA1 1JW

- 1 Bedroom
- 15th Floor
- Views across Swansea Bay
- Parking space
- Professional Applicants Only



Bay Estate Agents Ltd
29, Camona Drive, Maritime Quarter, Swansea, SA1 1YJ

01792 645566
mail@bayestateagents.com



PROPERTY DESCRIPTION

Available Mid-March 2026. This one bedroom executive apartment is situated on the 15th floor of the prestigious Meridian Tower. Sea views can be enjoyed from both the living room and bedroom. The apartment comprises an open-plan living room area with picture windows and Juliet balcony, offering stunning views across Swansea Bay. Adjoining fitted kitchen, bedroom with built-in mirrored wardrobes and family bathroom. Lift Access and Intercom security system. Allocated parking. Professional Applicants Only. Property currently on the market for sale. Please refer to Ofcom checker for mobile signal and coverage

Deposit: £1387.5 Term: 6 Months (plus) Council Tax: Band-F EPC: B Requested Holding Deposit: £212

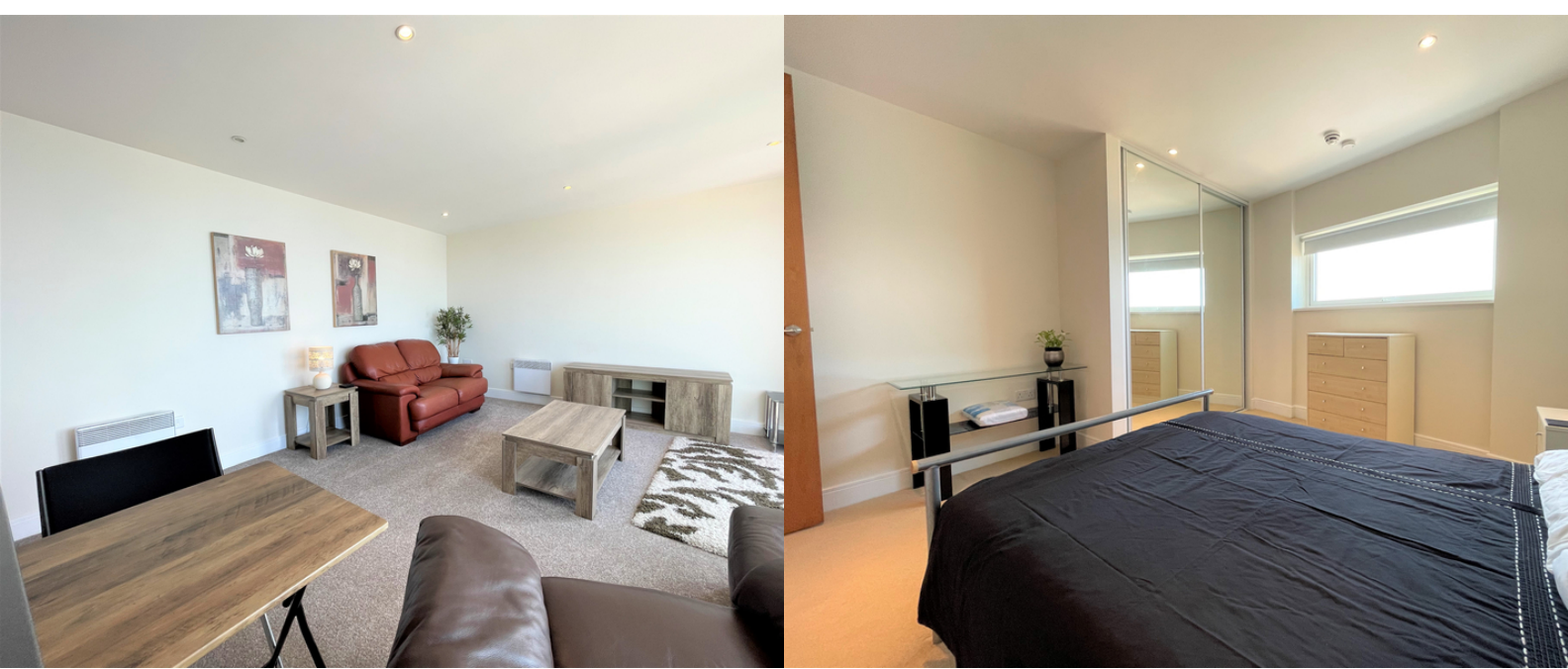


ROOM DESCRIPTIONS

Bedroom

Bathroom

Reception





Bay Estates & Lettings Agents

29, Camona Drive, Maritime Quarter, Swansea, SA1 1YJ
01792 645566
mail@bayestateagents.com