



Potton Road, Sandy, Bedfordshire, beds. sg19 2dl

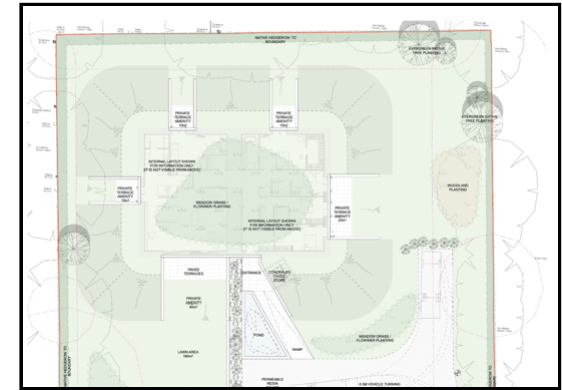


4 Bedroom Commercial Development £1,500,000 Freehold

The Bunker, A rare opportunity to purchase 1 acre of land with planning permission to create a unique, modern, and contemporary self-build house. The house is created by converting a former reservoir site, so you would create a vast and stunningly beautiful 3000 Square foot Detached house with a grass roof, nestled in the countryside surround by a trees, nature and wildlife and located within strolling distance of the RSPB Bird lodge and the train station.



Much of the work has already been done on site, including landscaping water and power connections, The site has been cleared and the doorways are ready to be created through the 2.4-metre-thick walls. This stunning house would have 4.2 meter high internal head height with lovely cavernous rooms, there will be doorways on the North, South, East and West Elevations.



These particulars are a guide only and do not constitute an offer or a contract. The floor plan is for identification purposes only and not to scale. All measurements are approximate and should not be relied upon if ordering furniture, white goods and flooring etc. We have presented the property as we feel fairly describes it but before arranging a viewing or deciding to buy, should there be anything specific you would like to know about the property please enquire. Satchells have not tested any of the appliances or carried out any form of survey and advise you to carry out your own investigations on the state, condition, structure, services, title, tenure, and council tax band of the property. Some images may have been enhanced and the contents shown may not be included in the sale. Satchells routinely refer to 3rd party services for which we receive an income from their fee. If you would like us to refer you to one of these services please ask one of our staff who will pass your details on. We advise you check the availability of the property on the day of your viewing.



