

3 Thornhill Park, Le Vieux Beaumont, St Peter. JE3 7ZJ

£949,000 Freehold

FOR SALE



PROPERTY DESCRIPTION

Situated in a peaceful and highly sought-after close, this beautiful granite faced 5-bedroom, 3-bathroom family home offers 2,143sq. ft. of well-designed living space filled with natural light and enjoying picturesque green views. Conveniently located within walking distance of St Peter's Village and a short drive to Beaumont, the property enjoys easy access to local amenities, the airport, and is in the catchment area for excellent schools, including Les Quennevais School. The ground floor features a bright and inviting living room with a log burner, seamlessly flowing into a sunroom currently used as a dining room. Bi-fold doors open to the secure garden, ideal for outdoor enjoyment. The spacious Stoneham kitchen, fitted with solid wooden units, includes a large open window/serving hatch overlooking the dining space. A utility room and cloakroom complete the ground floor. On the first floor are three spacious double bedrooms, including a primary bedroom with fitted wardrobes and en-suite bathroom, plus a house bathroom. The top floor features the 4th double bedroom with fitted wardrobes, and a fifth single bedroom. Externally, the property features a private south-facing low maintenance garden with a patio and lawn area. There is parking for three cars at the front of the property. This exclusive development of just 15 homes and 14 apartments benefits from ample visitor parking and a large private playing field for residents. This light-filled granite property presents an exceptional opportunity for family living in a serene and picturesque location.

FEATURES

- Granite faced 2,143sq.ft 5 bed, 3 bath family home
- 3 receptions - lounge, sunroom, dining space
- South facing low maintenance garden
- Parking for 3 vehicles + visitor
- Large private playing field for residents
- Peaceful location within a hamlet of 15 houses



ROOM DESCRIPTIONS

Directions

At the cannon on Beaumont Hill, head up Old Beaumont Hill. Near the top, you'll see an estate (Thornhill Park) on RHS. Number 3 is at the end on the LHS opposite the green—look out for the board.

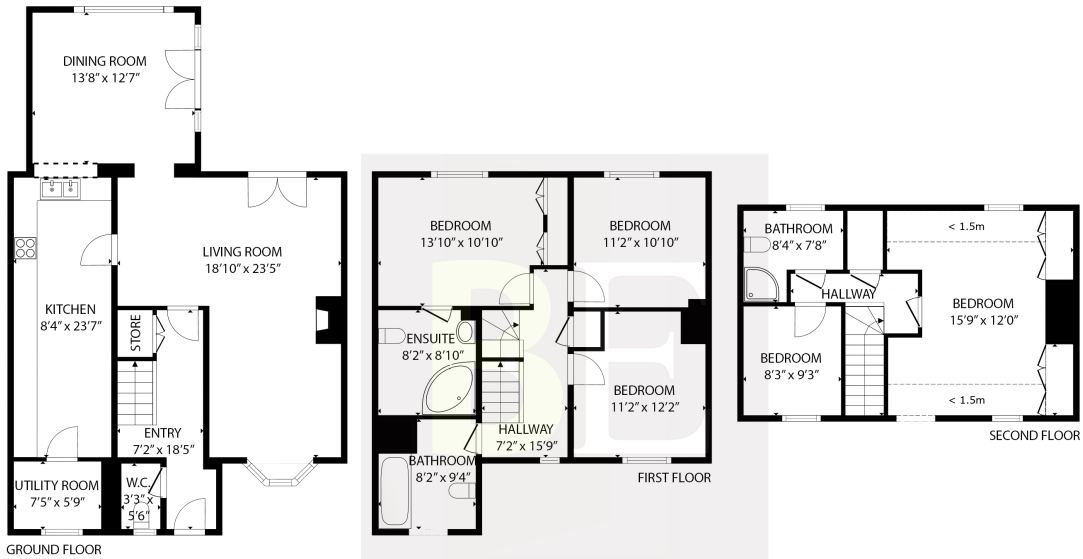
What3words: <https://w3w.co/mats.crusher.vertically>







FLOORPLAN



GROSS INTERNAL AREA
GROUND FLOOR: 943 sq. ft, FIRST FLOOR: 698 sq. ft, SECOND FLOOR: 502 sq. ft
TOTAL: 2143 sq. ft

EXCLUDED AREAS: REDUCED HEADROOM BELOW 1.5M: 69 sq. ft

SIZES AND DIMENSIONS ARE APPROXIMATE, ACTUAL MAY VARY