

The opportunity to acquire a 40% shared ownership, or indeed purchase outright 100% at £220,000 this contemporary and stylish one bedroom apartment situated just outside of Maidenhead town centre.

An upper floor apartment located in this sought after development offering direct access to the town centre, mainline train station, and commuter routes.

The property offers a large open plan entertaining space, incorporating lounge and kitchen, in addition there is a double bedroom, and modern family bathroom.

Offers a modern living area perfect for first time buyers or professional couples.



Property Information

- 

LEASEHOLD TERM 114 YEARS REMAINING
- 

NO ONWARD CHAIN
- 

MODERN APARTMENT
- 

FEATURES CONTEMPORARY FITTED UNITS WITH INTEGRATED APPLIANCES
- 

OPTION TO PURCHASE 40% OR 100% OF PROPERTY
- 

WALKING DISTANCE FROM CROSSRAIL (ELIZABETH LINE) AND TOWN CENTER
- 

OPEN-PLAN KITCHEN
- 

LIFT ACCESS TO ALL FLOORS

					
x1	x1	x1	x1	N	N
Bedrooms	Reception Rooms	Bathrooms	Parking Spaces	Garden	Garage

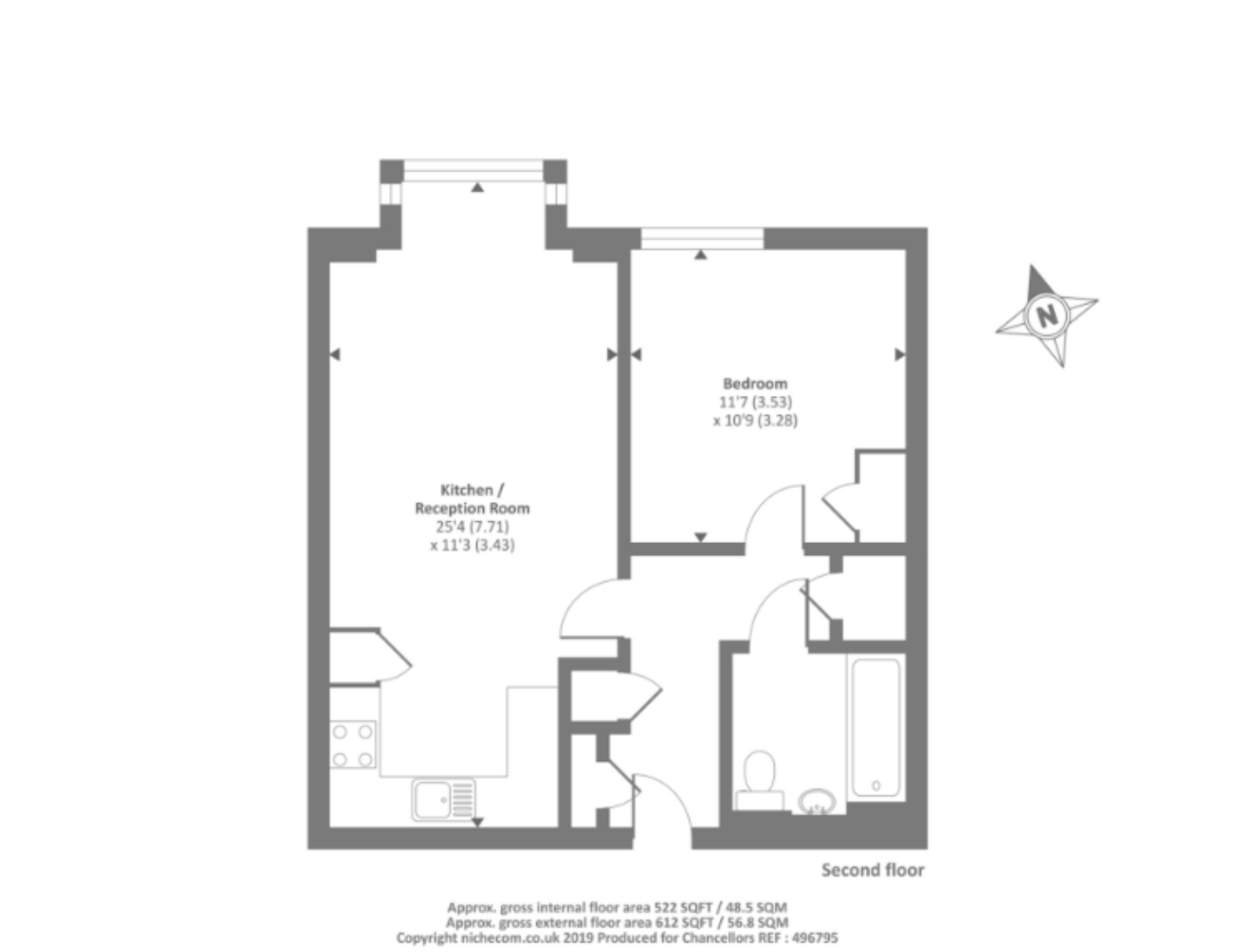
Location

This property is conveniently located next to Maidenhead Crossrail Railway station approximately 0.76 mile away, centre providing fast links into London Paddington (fast trains approx. 20 minutes). Walking distance to the town centre. This now also benefits from being part of the Crossrail network with the Elizabeth Line offering direct services into Central and East London.

School And Leisure

There are numerous local sports clubs including tennis, rugby, rowing and football, various fitness centres and racing at Ascot and Windsor. The River Thames can also be accessed at Maidenhead with many walks to be enjoyed along the Thames Path. The local area has many walking trails, including the National Trust woodland at Maidenhead Thicket and Pinkneys Green. Nearby amenities include numerous golf courses, Braywick Leisure centre, a multiplex cinema, shops and restaurants. There are also a number of good and outstanding schools close by, including Highfield Girls School

Floor Plan



Prospective purchasers should be aware that these sales particulars are intended as a general guide only and room sizes should not be relied upon for carpets or furnishing. We have not carried out any form of survey nor have we tested any appliance or services, mechanical or electrical. All maps are supplied by Goview.co.uk from Ordnance Survey mapping. Care has been taken in the preparation of these sales particulars, which are thought to be materially correct, although their accuracy is not guaranteed and they do not form part of any contract.

