



Hawkshead Lane, North Mymms, Hatfield, Hertfordshire, AL9

£800,000

- Rarely available double-fronted semi-detached home
- Two reception rooms
- Garage and off-street parking
- Scope to extend (subject to planning permission)
- Three bedrooms
- Kitchen and conservatory
- 100ft south-westerly facing garden backing onto farmland
- Peaceful location

Hawkshead Lane, North Mymms, Hatfield, Hertfordshire, . AL9

£800,000 Freehold

CHAIN FREE

A rarely available double-fronted, three-bedroom semi-detached family home.

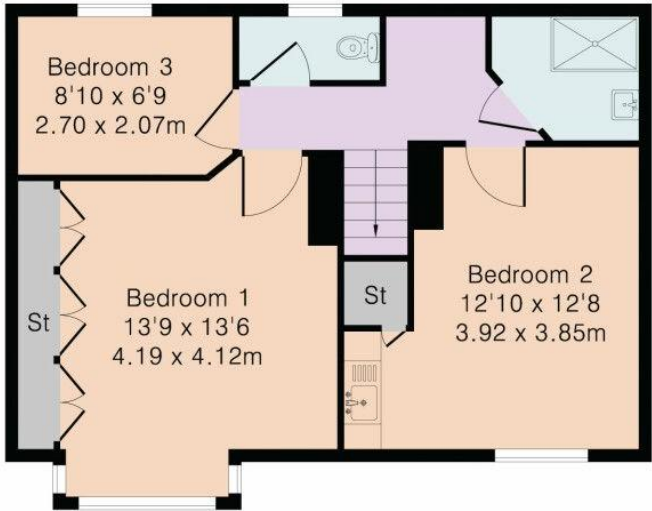
This charming property offers two reception rooms, a well-appointed kitchen, conservatory, garage, off-street parking, and a stunning 100ft south-westerly facing garden backing onto Royal Veterinary farmland.

The home also offers excellent scope to extend (STPP). Accommodation Comprising Three bedrooms Two reception rooms Kitchen Conservatory Family bathroom Garage and off-street parking Expansive south-westerly garden

Approximate Gross Internal Area 1078 sq ft – 100 sq m
Ground Floor Area 608 sq ft – 56 sq m
First Floor Area 471 sq ft – 44 sq m



Ground Floor



First Floor

