

Cheapside

Codford, Warminster, BA12 0PQ

COOPER
AND
TANNER



£399,950 Freehold

This three bedroom detached cottage is quietly tucked away down a lane in the sought after village of Codford. It has a lovely quirky feel and has good sized accommodation. There is a sitting room with a wood burner with a large conservatory and a separate dining room. The property boasts a large garden and has views over open countryside. It benefits from a detached garage and parking.

Cheapside

Codford, Warminster

BA12 0PQ

 3  2  1 EPC D

£399,950 Freehold

DESCRIPTION

This three bedroom detached cottage is quietly tucked away down a lane in the sought after village of Codford. It has a lovely quirky feel and has good sized accommodation. There is a sitting room with a wood burner with a large conservatory and a separate dining room. The property boasts a large garden and has views over open countryside. It benefits from a detached garage and parking. The accommodation comprises entrance hall with stairs to the first floor, downstairs cloakroom, utility area, fitted kitchen with a range of wall and base units, stainless steel range cooker with extractor over, space for fridge/freezer, separate dining room, sitting room opening into a conservatory with sliding doors opening onto the rear garden. Upstairs the landing leads to three bedrooms, there is an area that could be used as an office and a family bathroom.

OUTSIDE

At the front there is a detached garage where you can park in front. There is access to the front door and also a side gate. At the rear of the property there is a seating area with an area of lawn and a rockery and borders full of shrubs and plants, it is enclosed by a wall at the back and at both sides. Continuing round to the side it is laid to lawn with borders with shrubs there is also a path that leads to the side gate. The side garden then leads to an extensive lawned garden fully enclosed with fencing either side. There are mature trees at the end of the garden.

COUNCIL TAX

Band 'C'

LOCATION

The Wylde Valley village of Codford is extremely well provided and local amenities include Post Office and village supermarket, garage, village school, doctors surgery, social club and The Woolstore Theatre. Warminster lies approx 8 miles distant and offers a wide range of shopping and leisure facilities to include library, sports centre, swimming pool, schools, churches, doctors' and dentists' surgeries, hospital and post office. Warminster also benefits from a main line railway station to London Waterloo whilst the nearby A303 provides excellent road links to London to the east and Exeter to the west. Local attractions include Longleat House and Safari Park, Shearwater Lake, Stourhead and Salisbury Plain.





Cheapside, Warminster, BA12

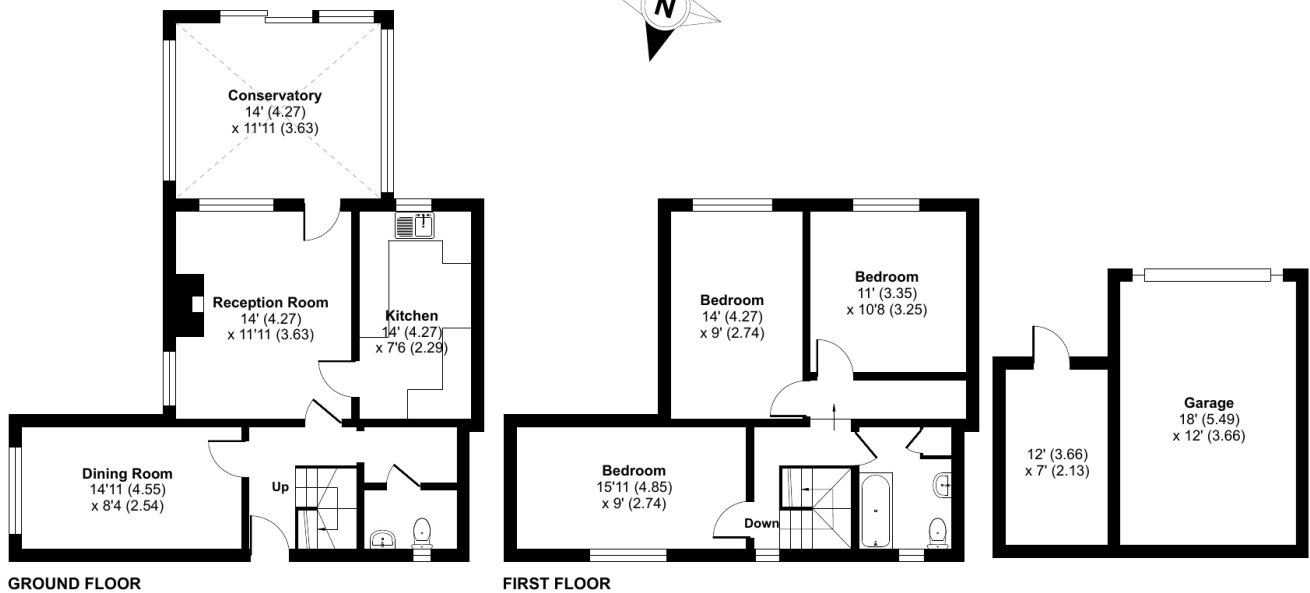
Approximate Area = 1264 sq ft / 117.4 sq m

Garage = 216 sq ft / 20.1 sq m

Outbuilding = 84 sq ft / 7.8 sq m

Total = 1564 sq ft / 145.3 sq m

For identification only - Not to scale



Floor plan produced in accordance with RICS Property Measurement Standards incorporating International Property Measurement Standards (IPMS2 Residential). © nitchcom 2024. Produced for Cooper and Tanner. REF: 1103785

WARMINSTER OFFICE

Telephone 01985 215579

48-50, Market Place, Warminster, Wiltshire BA12 9AN

warminster@cooperandtanner.co.uk

**COOPER
AND
TANNER**

Important Notice: These particulars are set out as a general outline only for the guidance of intended purchasers and do not constitute, nor constitute part of, an offer or contract. All descriptions, dimensions, reference to condition and necessary permissions for use and occupation, warranties and other details are given without responsibility and any intending purchasers should not rely on the m as statements or representations of fact but must satisfy themselves by inspection or otherwise as to the correctness of each of them.

