

FOR SALE

Dordrecht Road,
Wendell Park, W3

Terraced House
West London

£1,200,000 fh

4  2  1 



**horton
andgarton**

SALES / LETTINGS / PROPERTY MANAGEMENT

hortonandgarton.co.uk | Sales 020 8819 0510 | Lettings 020 8819 0511
172 King Street, Hammersmith, W6 0QU



FOR SALE

Dordrecht Road,
Wendell Park, W3

Terraced House
West London

£1,200,000 fh

4  2  1 



**horton
andgarton**

SALES / LETTINGS / PROPERTY MANAGEMENT

hortonandgarton.co.uk | Sales 020 8819 0510 | Lettings 020 8819 0511
172 King Street, Hammersmith, W6 0QU



FOR SALE

Dordrecht Road,
Wendell Park, W3

Terraced House
West London

£1,200,000 fh

4  2  1 

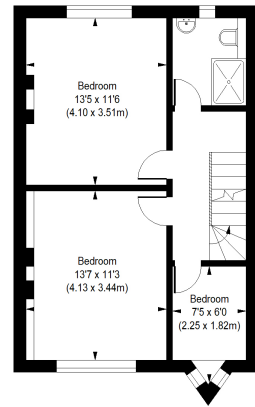
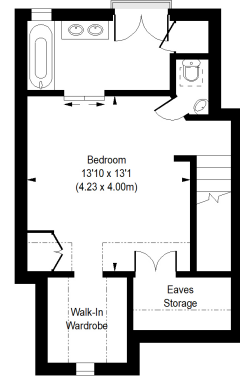
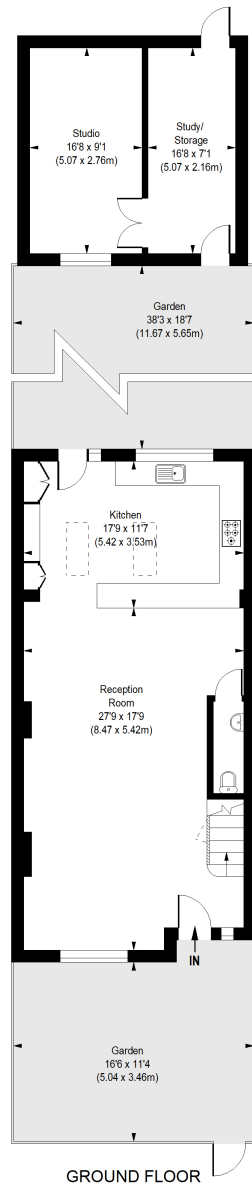


**horton
andgarton**

SALES / LETTINGS / PROPERTY MANAGEMENT

hortonandgarton.co.uk | Sales 020 8819 0510 | Lettings 020 8819 0511
172 King Street, Hammersmith, W6 0QU





DORDRECHT ROAD, W3

APPROXIMATE GROSS INTERNAL AREA

1490 Sq' / 138.42 SqM

Eaves & Reduced Height : 87 Sq' / 8.08 SqM

Out Building : 274 Sq' / 25.45 SqM

Total : 1851 Sq' / 171.96 SqM

Not to scale, for guidance only and must not be relied upon as a statement of fact.
All measurements and areas are approximate only



Period family house | Four bedrooms - Two bathrooms |
1490 Sq' - 188.42 SqM | 38' garden and double garage |
EPC rating D | Wendell Park



hortonandgarton.co.uk
Sales 020 8819 0510
Lettings 020 8819 0511

172 King Street, Hammersmith, W6 0QU