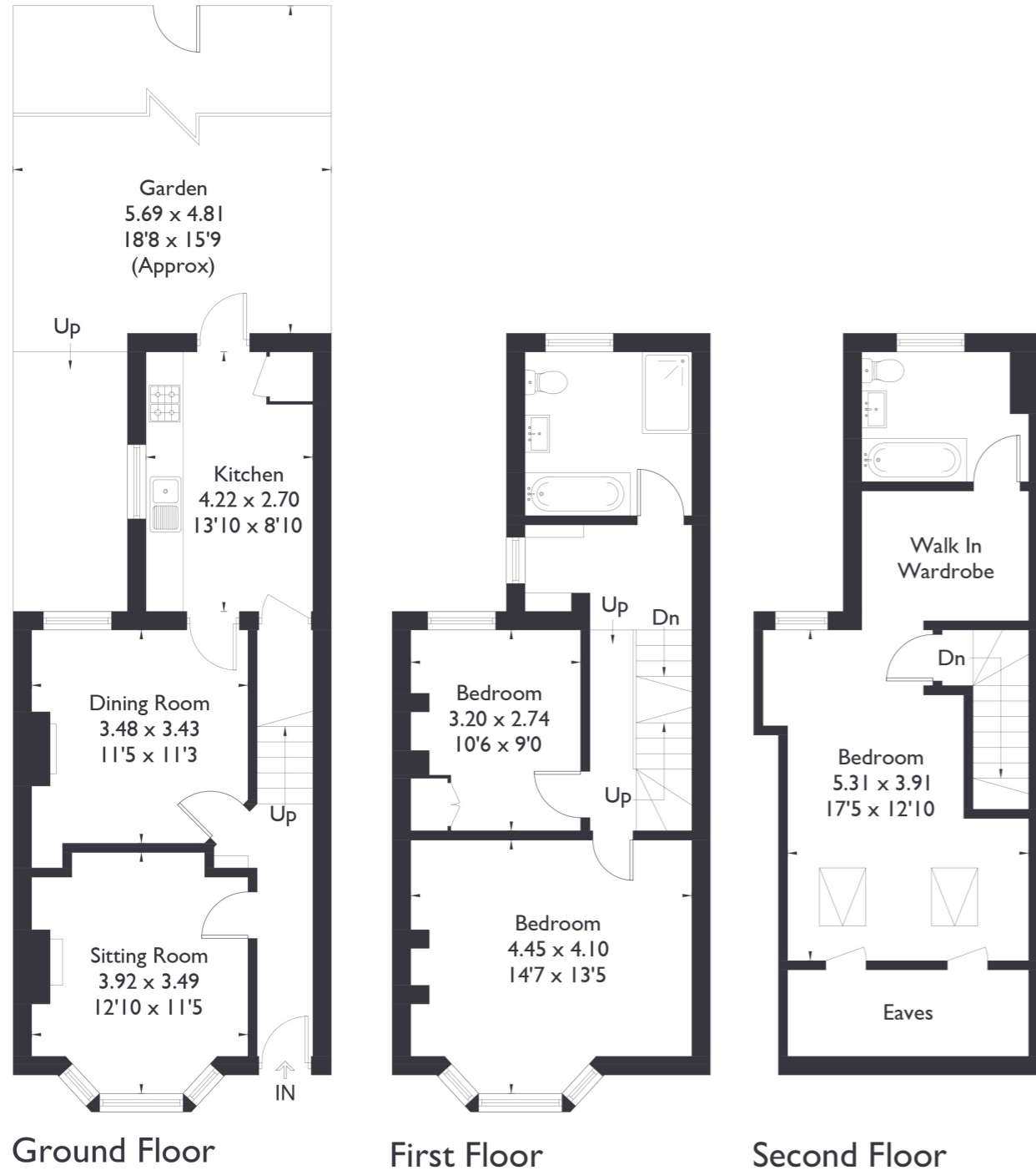


Seaford Road, W13

Approximate Floor Area = 129.2 sq m / 1391 sq ft
(Including Eaves)



3 BEDROOM HOUSE

Seaford Road, W13
£875,000

Welcome to this charming three bedroom, two bathroom home, thoughtfully designed across two spacious floors, with the loft already converted for added convenience. This property boasts generously sized rooms filled with natural light streaming through stunning bay windows. Featuring a separate kitchen, dining area, and reception room, the home offers versatility and the potential for further extension if desired. That said, it is already in excellent move in condition.

FEATURES

- Three Bedrooms
- Two Bathrooms
- Separate Kitchen And Living Space
- West Ealing (Elizabeth Line)/ Northfields Station
- On Street Parking
- Potential To Extend Rear (STPP)
- EPC Rating D



3 BEDROOM HOUSE

Seaford Road, W13

One of the standout features is its prime location. Enjoy the vibrant amenities of Northfield Avenue, with quick and easy access to both West Ealing and Ealing Broadway.

Commuters will appreciate the excellent transport links, including the Elizabeth Line from West Ealing Station (just 8 minutes away) and the Piccadilly Line at Northfields Station (9 minutes away), providing seamless connections.

Travel to Tottenham Court Road, for instance, in just 19 minutes. This home truly combines comfort, convenience, and potential in an unbeatable location.

EPC Rating D.

