



Hatherley Grove, London, W2 5RE

Cow & Co
LONDON



Available Now A lovely one double bedroom apartment offering contemporary style fixtures and fittings along with bright and spacious accommodation throughout.

Hatherley Court is located in the heart of Bayswater just off Westbourne Grove, five minutes from Bayswater (Circle & District lines) and Queensway (Central line) stations, with excellent bus connections to Central London. The flat is only five minutes walk from the open green spaces of Hyde Park. It is ideally situated to take advantage of all the boutiques, restaurants and bars of Westbourne Grove and Queensway, the large Waitrose supermarket and the Porchester Centre with its gym, swimming pool and library.

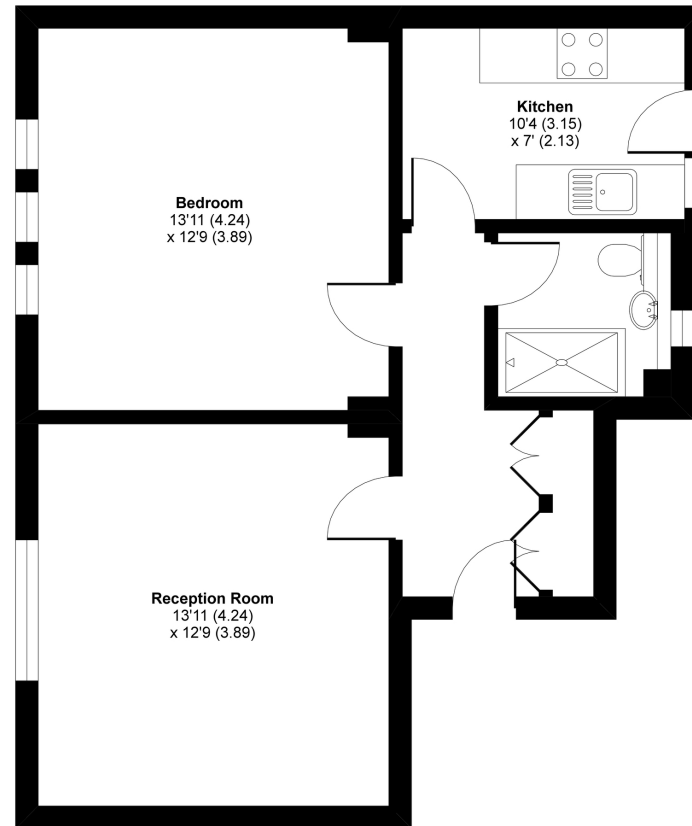


- *Available Now*
- One double bedroom apartment
- Impressive period mansion block with lift and porter
- Well equipped modern kitchen
- Remodelled bathroom
- Set moments from a variety of amenities and transport links
- Generous reception room
- Viewing strictly by appointment only

Hatherley Court, Hatherley Grove, London, W2

Approximate Area = 563 sq ft / 52.3 sq m

For identification only - Not to scale



FIFTH FLOOR



Floor plan produced in accordance with RICS Property Measurement Standards incorporating International Property Measurement Standards (IPMS2 Residential). © nichecom 2020. Produced for Cow & Co Properties Ltd. REF: 675999

Tel: 0208 065 0010
Email: thehub@cowandco-london.com
Web: cowandco-london.com

Agents note: All measurements are approximate and whilst every attempt has been made to ensure accuracy they are for general guidance only and must not be relied on. The fixture and fittings referred to have not been tested and therefore no guarantee can be given that they are in working order. Internal photographs are reproduced for general information and it must not be inferred that any item shown is included with the property.

Cow & Co
LONDON