



Ashton Court,
Clayton



OneAgency

01782 970222

hello@oneagencygroup.co.uk



£1,100 pcm

A well presented three bedroom detached property in the popular location of Clayton. The property benefits from three bedrooms, attached garage and generous garden space. The property is located close to Newcastle town centre, Royal Stoke Hospital and other amenities. An ideal let for a family. Viewing is highly advised!





Ground Floor

Hall

1.65m x 1.37m (5' 5" x 4' 6") Composite front door, radiator and laminate flooring.

Lounge

4.63m x 3.41m (15' 2" x 11' 2") A double glazed window, radiator and laminate flooring.

Kitchen

2.66m x 2.36m (8' 9" x 7' 9") A range of wall and base units with worktops, stainless steel sink basin, integral oven and electric hob with extractor over, double glazed window and laminate flooring.

Dining Room

2.66m x 1.95m (8' 9" x 6' 5") A double glazed window, radiator and carpet flooring.

First Floor

Bedroom One

3.76m x 2.46m (12' 4" x 8' 1") A double glazed window, radiator and carpet flooring.

Bedroom Two

3.60m x 2.46m (11' 10" x 8' 1") A double glazed window, radiator and carpet flooring.

Bedroom Three

2.74m x 1.93m (9' 0" x 6' 4") A double glazed window, radiator and carpet flooring.

Shower Room

1.92m x 1.79m (6' 4" x 5' 10") A white suite with walk in shower unit, pedestal hand wash basin, low level W/C, chrome towel radiator, tiled walls, double glazed window and vinyl flooring.

External

Front - A block paved driveway for off road parking and pebbled garden.

Rear - A paved garden with shrubs and fenced borders.

Garage

5.36m x 2.39m (17' 7" x 7' 10") An electric door, plumbing for a washing machine and electric power.

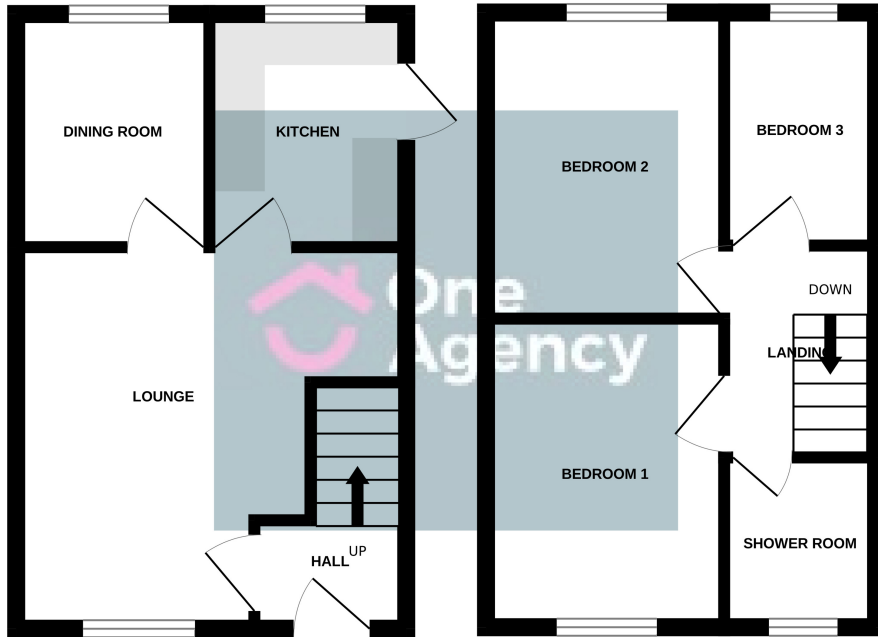
AGENTS NOTES

The council tax band is C. The local authority is Newcastle-under-Lyme.

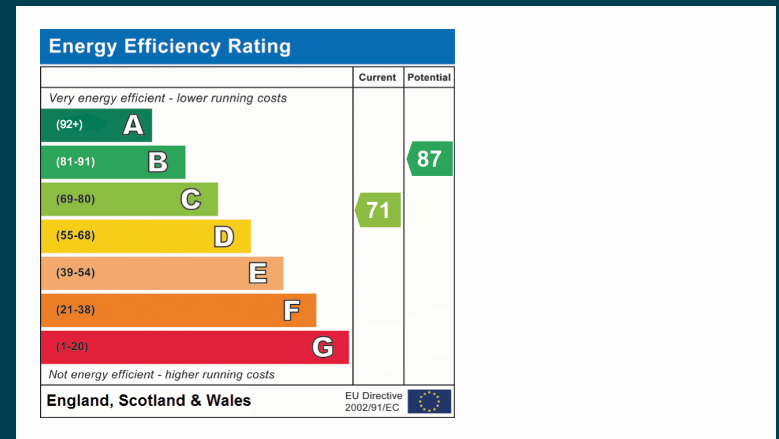


GROUND FLOOR

1ST FLOOR



Whilst every attempt has been made to ensure the accuracy of the floorplan contained here, measurements of doors, windows, rooms and any other items are approximate and no responsibility is taken for any error, omission or mis-statement. This plan is for illustrative purposes only and should be used as such by any prospective purchaser. The services, systems and appliances shown have not been tested and no guarantee as to their operability or efficiency can be given.
Made with Metropix ©2024



OneAgency, 9 & 10 Ridge House Drive, Festival Park, Stoke-on-Trent, ST1 5SJ

01782 970222

hello@oneagencygroup.co.uk

Every attempt has been made to ensure accuracy, however, all measurements are approximate and for illustrative purposes only. **Not to scale.**

In accordance with The Consumer Protection from Unfair Trading Regulations 2008 the following particulars have been prepared in good faith and they are not intended to constitute part of an offer or contract. We have not carried out a structural survey and the services, appliances and specific fittings have not been tested. All photographs, measurements, floor plans and distances referred to are given as a guide only and should not be relied upon for the purchase of carpets or any other fixtures and fittings. Lease details, service charges and ground rent (where applicable) are given as a guide only and should be checked and confirmed by your Solicitor prior to exchange of contracts.