



63 Strodes Crescent, Staines-upon-Thames, Surrey. TW18 1DG.
3 Bedroom Semi-Detached House - £530,000 Freehold

63 Strodes Crescent, Staines-upon-Thames, Surrey. TW18 1DG.

01784 451458

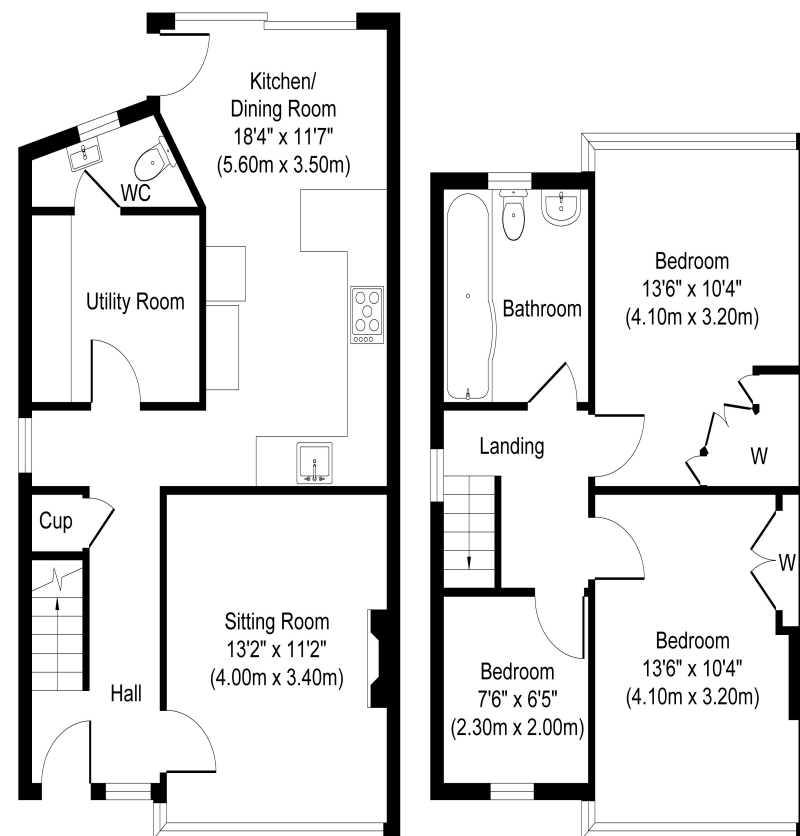
3 Bedroom Semi-Detached House - £530,000 Freehold

VERY WELL PRESENTED & SPACIOUS THREE BEDROOM SEMI-DETACHED PROPERTY SITUATED ALONG THIS SOUGHT AFTER ROAD IDEALLY LOCATED FOR EASY ACCESS TO STAINES TOWN CENTRE, MAINLINE TRAIN STATION, LOCAL SHOPS & SCHOOLS.

The property has been extended and benefits from a spacious modern kitchen/diner with separate utility, sitting room, downstairs W.C, three well-proportioned bedrooms, modern white bathroom suite, large secluded rear garden and off-street parking. Viewings Highly Recommended!

Key Features

**WELL PRESENTED THROUGHOUT
EXTENDED & SPACIOUS
SOUGHT AFTER LOCATION
MODERN KITCHEN & BATHROOM
DOWNSTAIRS W.C**



Ground Floor
Approximate Floor Area
521 sq. ft
(48.40 sq. m)

First Floor
Approximate Floor Area
453 sq. ft
(42.10 sq. m)



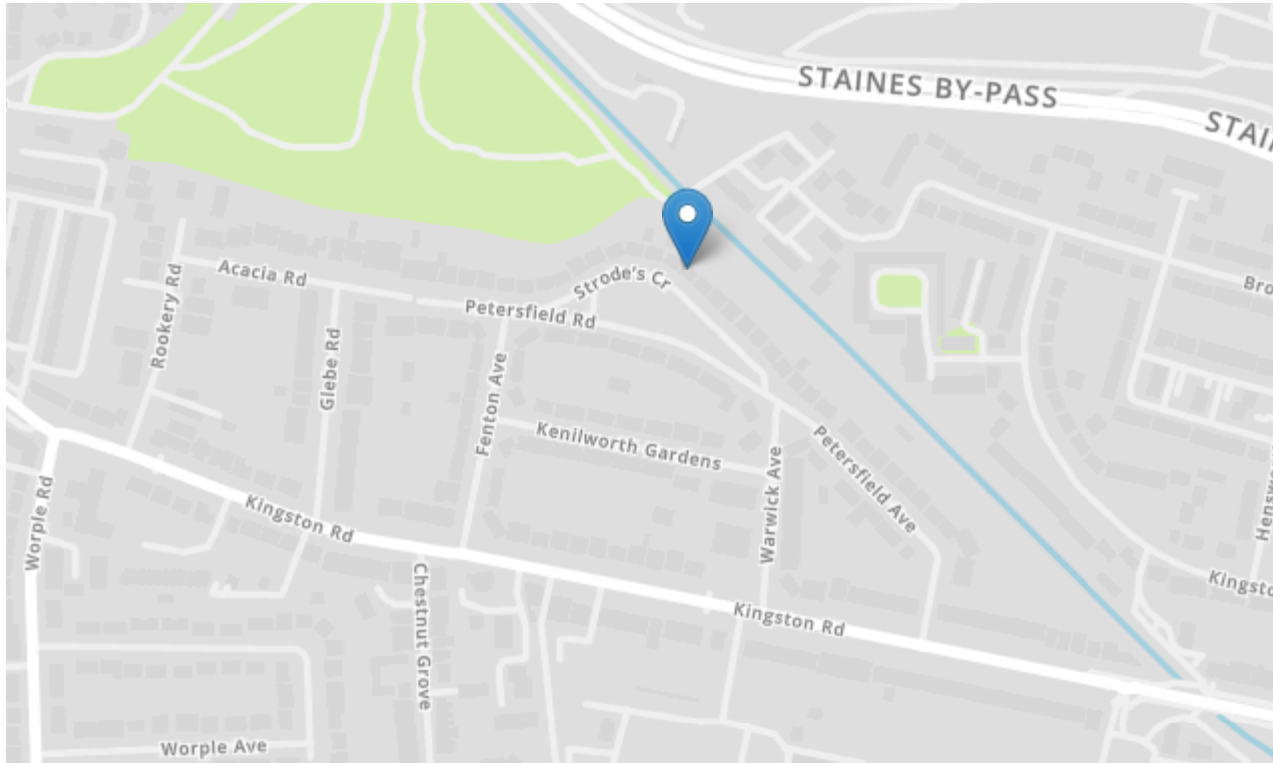
GREGORY BROWN
RESIDENTIAL SALES & LETTINGS





63 Strodes Crescent, Staines-upon-Thames, Surrey. TW18 1DG.

gregory-brown.co.uk



Tenure **Freehold**
Lease Term
Ground Rent
Service Charge
Local Authority
Council Tax

We have prepared these property particulars as a general guide to a broad description of the property. They are not intended to constitute part of an offer or contract. We have not carried out a structural survey and the services, appliances and specific fittings have not been tested. All photographs, measurements, floorplans and distances referred to are given as a guide only and should not be relied upon for the purchase of carpets or any other fixtures or fittings. Lease details, service charges and ground rents (where applicable) and council tax are given as a guide only and should be checked and confirmed by your solicitor prior to exchange of contracts. The copyright of all details, photographs and floorplans remain exclusive to Gregory Brown.

