

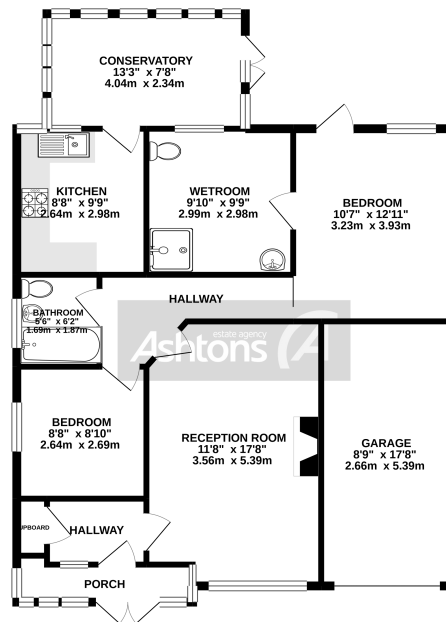


Orchard Street, Fearnhead, Warrington. Offers in Excess of £190,000

Freehold Semi Detached Bungalow | No Chain | Corner Plot | Modified to Allow Wheelchair Access |
Lounge and Kitchen | Two Bedrooms, Bathroom and Wet Room | Modernising Needed | Driveway,
Garage and Gardens |



GROUND FLOOR
1004 sq.ft. (93.3 sq.m.) approx.



TOTAL FLOOR AREA: 1004 sq.ft. (93.3 sq.m.) approx.

Whilst every attempt has been made to ensure the accuracy of the floorplan contained here, measurements of doors, windows, rooms and any other areas are approximate and no responsibility is taken for any error, omission or mis-statement. This plan is for illustrative purposes only and should be used as such by any prospective purchaser. The services, appliances and fixtures shown have not been tested and the purchaser is to take responsibility of efficiency on the plans.
Made with Metaphor 03/00

In need of modernisation this **FREEHOLD** semi detached bungalow is offered for sale with no upward chain and is located in a popular development of similar bungalows close to local amenities, schools and transport and motorway links. The accommodation is presented on the one floor and in general detail comprises entrance porch, entrance hall, lounge, kitchen, conservatory, two bedrooms, bathroom and wet room. Externally there is an attached garage, ample parking to the front and side and paved rear garden with borders with established plants, trees and shrubs. The bungalow has been modified to allow for easy wheelchair access to include ramps and widened doorways. Call 01925 479 334 to view and please refer to our floor plan for layout and measurements.



Contact your local office to arrange a viewing:

- Padgate: 01925 479334
- Great Sankey: 01925 454300
- Winwick: 01925 232146
- Stockton Heath: 01925 453400
- St.Helens: 01744 754120
- Wigan: 01942 498862
- Culcheth: 01925 764744
- Ashton-In-Makerfield: 01942 364446
- Newton-Le-Willows: 01925 907770
- Commercial Office: 01925 907709
- Lettings Head Office: 01925 873533
- Financial Services: 01925 221234

Viewing Arrangements

Viewing is strictly by appointment only through Ashtons Estate Agency.

Disclaimer Property Details

These particulars, whilst being believed to be accurate are set out as a general outline only for guidance and do not constitute any part of an offer or contract. Intending purchasers should not rely on them as statements of representation of fact, but must satisfy themselves by inspection or otherwise as to their accuracy. We have not carried out a detailed survey nor tested the services, appliances and specific furnishings. The measurements given are approximate. No person in this firm's employment has the authority to make or give any representation or warranty in respect of the property.

All details, photographs and floorplans are the copyright of Ashtons Estate Agency.



How much you can borrow?
Speak to a mortgage expert in your local office.

Ashtons Financial Services

Ashtons.net rightmove

PrimeLocation.com Zoopla.co.uk

Ashtons