



25, Tabbs Close

Letchworth Garden City,
Hertfordshire, SG6 1DW
£195,000

country
properties

One bedroom cluster house with garage. Good size lounge with double glazed window. Fitted kitchen with window to front and understair cupboard. Dual aspect double bedroom with cupboard. Gas central heating. Single garage in nearby block. Small fenced garden to rear, away from house. Ideal first time or investment purchase. Contact us today to arrange your viewing.

Ground Floor

Hallway

Part glazed wooden door to front. Window to side. Coat hooks. Door to:

Lounge

11' 1" x 10' 8" (3.38m x 3.25m)
Double glazed Window to front. Stairs to first floor. TV & telephone points. Radiator. Door to:

Kitchen

7' 7" x 6' 5" (2.31m x 1.96m)
Range of fitted units to base and eye level. Single drainer sink unit with mixer tap. Appliances include cooker, fridge and washing machine. Wall mounted gas central heating boiler. Tiling to splash back areas. Double glazed window to front. Under stair cupboard.

First Floor

First Floor Landing

Access to loft space. Radiator. Doors to:

Bedroom One

11' 1" x 10' 8" (3.38m x 3.25m)
Dual aspect with windows to front and side. Radiator. Storage cupboard with radiator.

Bathroom

Three piece suite comprising panel bath with mixer tap and shower attachment, low level wc and wash hand basin. Tiling to splash back areas. Radiator. Window to front.

Outside

Detached Garden

Small grassed area accessed by side gate only.

Garage

Situated in nearby block (2nd from the left hand end). Up and over door.



Lease Details

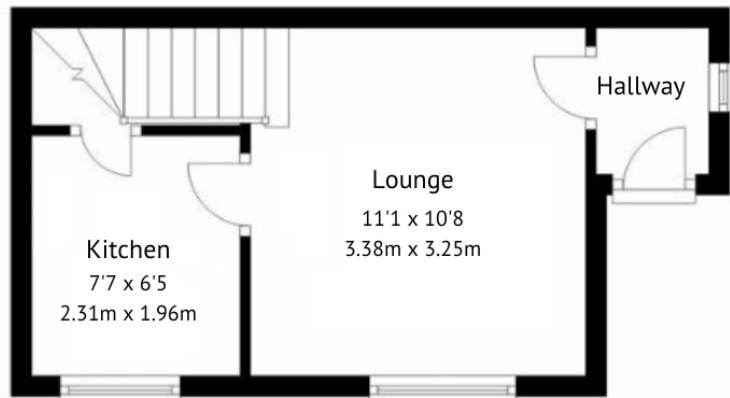
150 Years from 29 September 1996 - 112

Years remaining

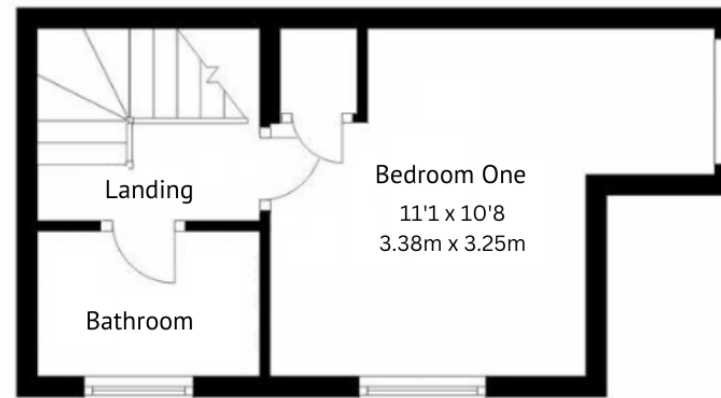
Service Charge - Nil

Ground Rent - Nil



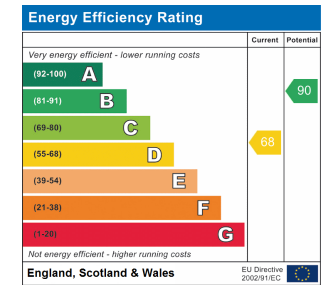


Ground Floor



First Floor

This floor plan is for illustrative purposes only. It is not drawn to scale. Any measurements openings and orientations are approximate. No details are guaranteed, they cannot be relied upon for any purpose and they do not form part of any agreement. No liability is taken for any error, omission or misstatement. A party must rely upon its own inspection(s).



All measurements are approximate and quoted in metric with imperial equivalents and for general guidance only and whilst every attempt has been made to ensure accuracy, they must not be relied on. The fixtures, fittings and appliances referred to have not been tested and therefore no guarantee can be given and that they are in working order. Internal photographs are reproduced for general information and it must not be inferred that any item shown is included with the property. For a free valuation, contact the numbers listed on the brochure.

Viewing by appointment only

Country Properties | 7, Howard Park Corner | SG6 1PQ
 T: 01462 481100 | E: simon.ellmers@country-properties.co.uk
 www.country-properties.co.uk

country
properties