

**Church Lane, W5**

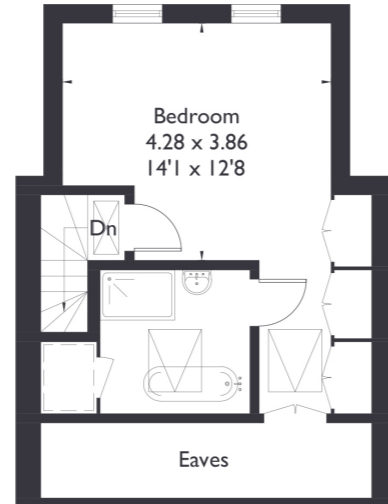
Approximate Floor Area = 153 sq m / 1647 sq ft  
(Excluding Eaves)



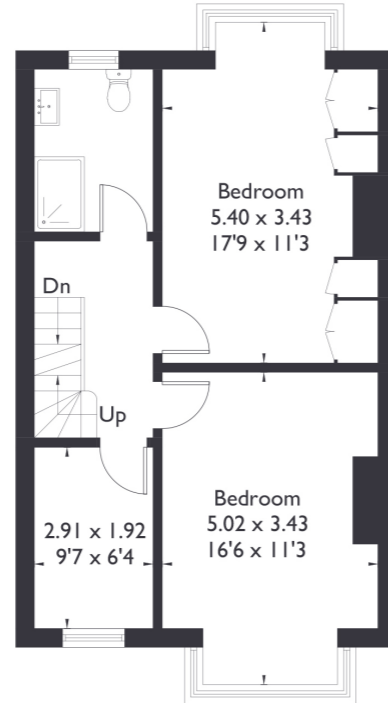
= Reduced head height below 1.5m



**Ground Floor**



**Second Floor**



**First Floor**



**4 BEDROOM HOUSE**

**Church Lane, W5**

**£1,400,000**

Welcome to this beautifully presented four bedroom, two bathroom home, featuring a convenient downstairs W/C. As you step inside, to your right you'll find a stunning reception room that seamlessly flows into the open plan kitchen, living, and dining area.

**FEATURES**

- Four Bedrooms
- Two Bathrooms/ Downstairs W/C
- Ealing Broadway Amenities Nearby
- Great Location For School Catchments
- South Ealing Station (Piccadilly Line) 5 Min Walk.
- On Street Parking



4 BEDROOM HOUSE

## Church Lane, W5

This bright and airy space leads to bifold doors that open onto a lovely garden, creating a perfect indoor/outdoor living experience.

Upstairs, the home boasts three spacious, light filled bedrooms, and one single bedroom with the top floor showcasing a gorgeous double bedroom and a large bathroom.

Situated in a prime location this property is within easy reach of the vibrant amenities of Ealing Broadway and South Ealing, with South Ealing station nearby being a 5 min walk. The Elizabeth Line at Ealing Broadway is just a 15 minute walk away, offering excellent transport links.

EPC Rating C.

