



1 Cherry Walk, Douglas, Isle of Man. IM2 5NS

An attractive detached true bungalow situated at the edge of a popular development.



£439,950 Freehold

PROPERTY DESCRIPTION

ACCOMMODATION

OPEN HOUSE FRIDAY 4TH APRIL 2PM UNTIL 4PM

ACCOMMODATION

This attractive detached true bungalow occupies an excellent corner plot in this sought after development and the property has been in the same ownership since it was constructed around 40 years ago.

This traditionally constructed home offers spacious accommodation briefly comprising of large lounge/diner, fitted kitchen, 3 bedrooms and shower room. Outside there are easily managed gardens surrounding the property and a private driveway leads to a spacious attached single garage.

The property has been well maintained and has has uPVC windows, doors, facias and soffits installed. In addition the property is served by gas fired central heating.

An internal inspection is recommended and this quality bungalow is offered with no onward chain.

FEATURES

- OPEN HOUSE FRIDAY 4TH APRIL 12pm UNTIL 2PM
- Attractive Detached True Bungalow
- Excellent Location
- Off Road Parking plus Garage
- Requires some decorative improvements
- Large Lounge and Fitted Kitchen
- 3 Bedrooms plus Shower Room
- Easily managed Gardens
- No Onward Chain

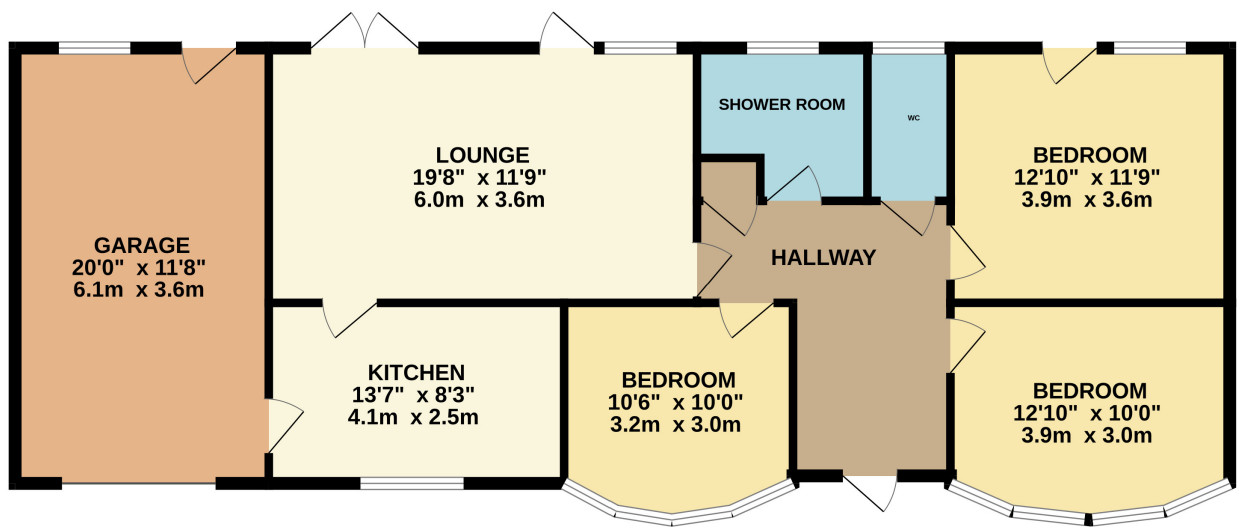


Property Images



FLOORPLAN

GROUND FLOOR 1138 sq.ft. (105.7 sq.m.) approx.



TOTAL FLOOR AREA : 1138 sq.ft. (105.7 sq.m.) approx.
Whilst every attempt has been made to ensure the accuracy of the floorplan contained here, measurements of doors, windows, rooms and any other items are approximate and no responsibility is taken for any error, omission or mis-statement. This plan is for illustrative purposes only and should be used as such by any prospective purchaser. The services, systems and appliances shown have not been tested and no guarantee as to their operability or efficiency can be given.
Made with Metropix ©2025

DISCLAIMER: Whilst Manxmove Ltd believe that these details are correct, neither Manxmove Ltd or their clients guarantee their accuracy in any way. Consequently, these details are not to be used to form part of any legally binding contract. Prospective purchasers or tenants are advised to visit this property to satisfy themselves as to the correctness of these details. Please note, we use wide angle camera lenses in order to show as much of each room as possible. This is not intended to mislead any prospective purchasers or tenants in any way and an honest verbal description is always available prior to viewing if required.