

25 Stourton View,

Frome, BA11 4DZ

COOPER
AND
TANNER



Offers in the Region of £255,000 Freehold

A beautifully presented two bedroom house with driveway parking, a single garage and landscaped gardens.

25 Stourton View, Frome, BA11 4DZ

 2  1  1 EPC C

Offers in the Region of £255,000 Freehold

DESCRIPTION

25 Stourton View is a spacious mid terrace house in a very quiet and popular location just a ten minute stroll of Victoria Park.

A UPVC front porch provides the perfect space to store coats and shoes before entering the house. The living space is well proportioned and open plan in it's arrangement. There is a great size lounge/dining room with some good storage built in and room for sofa's and a table and chairs. Doors open from the lounge/dining room through to a great size kitchen which is filled with natural light. There are a range of wall and base units, an integrated dishwasher, a Rangemaster oven with 5 hob and extractor and room for an American style fridge/freezer. Double doors spill out from the kitchen to the landscaped garden, with a patio/seating area offering an excellent spot for Al-fresco dining.

On the first floor there are two double bedrooms and a beautifully finished bathroom.

Externally there is brick paved driveway parking to the front. The gardens to the rear include a patio/seating area with a raised artificial lawn beyond, all of which is fully enclosed and child and pet friendly. To the rear of the garden a door leads through to the single garage which has a parking space in front.

ADDITIONAL INFORMATION

Mains gas central heating. All mains services are connected.

LOCATION

The location is one of the major selling points for this home. A quiet cul-de-sac within a ten minute walk of great schooling and Victoria Park. Frome is a historic market town with many notable buildings and features the highest number of listed buildings in Somerset. Frome offers a range of shopping facilities, a sports centre, several cafés, a choice of pubs, local junior, middle and senior schools, several theatres, and a cinema. Bath and Bristol are within commuting distance, and the local railway station connects at Westbury for London Paddington.





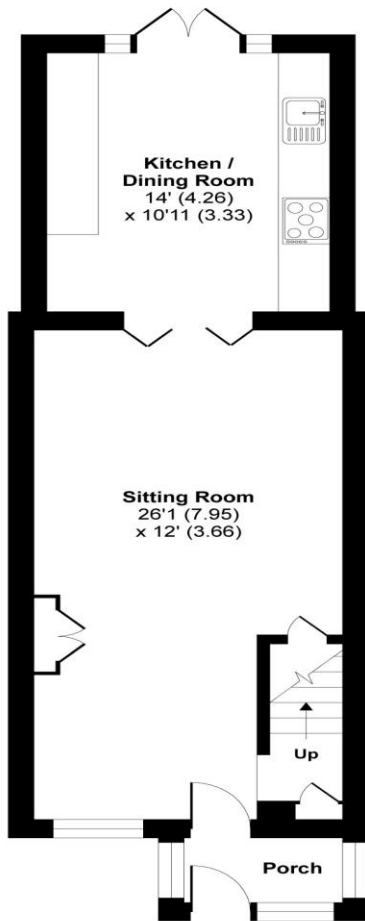
Stourton View, Frome, BA11

Approximate Area = 829 sq ft / 77 sq m

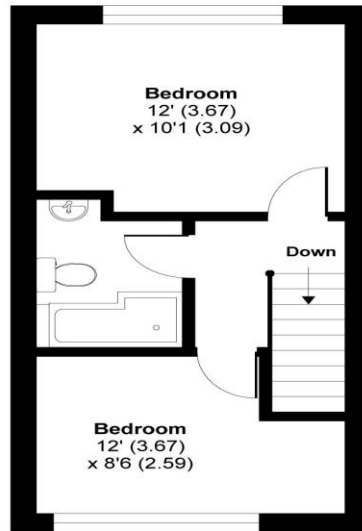
Workshop = 129 sq ft / 12 sq m

Total = 958 sq ft / 89 sq m

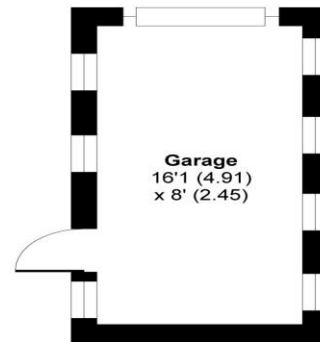
For identification only - Not to scale



GROUND FLOOR



FIRST FLOOR



FROME OFFICE

Telephone 01373 455060

6 The Bridge, Frome, Somerset, BA11 1AR

frome@cooperandtanner.co.uk

**COOPER
AND
TANNER**

Important Notice: These particulars are set out as a general outline only for the guidance of intended purchasers and do not constitute, nor constitute part of, an offer or contract. All descriptions, dimensions, reference to condition and necessary permissions for use and occupation, warranties and other details are given without responsibility and any intending purchasers should not rely on them as statements or representations of fact but must satisfy themselves by inspection or otherwise as to the correctness of each of them.



RICS



OnTheMarket