



Blacksmith Cottage

Stevenage Road, Little Wymondley, Hitchin,
Hertfordshire, SG4 7JA

Guide Price £425,000

country
properties

Discover the charm and comfort of this delightful Grade II listed two bedroom cottage nestled in the heart of Little Wymondley. Perfectly blending traditional character with modern amenities, this inviting home offers a welcoming retreat for first-time buyers, downsizers, or anyone seeking a peaceful village lifestyle.

Step inside to find a bright and spacious reception room that exudes warmth and homeliness. Natural light floods through the windows, highlighting the beautiful features and creating a cosy atmosphere ideal for relaxing evenings or entertaining guests. The room's versatile layout provides ample space for both comfortable seating and dining arrangements.

The heart of the cottage is undoubtedly the well-equipped kitchen, designed to meet the needs of contemporary living. Featuring ample storage, generous work surfaces, and high-quality fixtures, this kitchen inspires culinary creativity and convenience alike. Whether you're preparing a quick breakfast or a family meal, this space caters perfectly to your lifestyle.

The main bedroom is generously proportioned and offer tranquil settings for rest and relaxation. The second bedroom could easily serve as a guest bedroom or double up as an office. Each room benefits from plentiful natural light and neutral décor, providing a blank canvas for you to personalise according to your taste. The cottage's single bathroom is thoughtfully designed with modern fittings and a clean, fresh aesthetic, ensuring comfort and practicality.

Outside, the cottage boasts a courtyard garden, Ideal for those who enjoy outdoor entertaining, or a private sanctuary to enjoy sunny days and peaceful evenings. The property also benefits from convenient parking facilities, adding to its practical appeal.

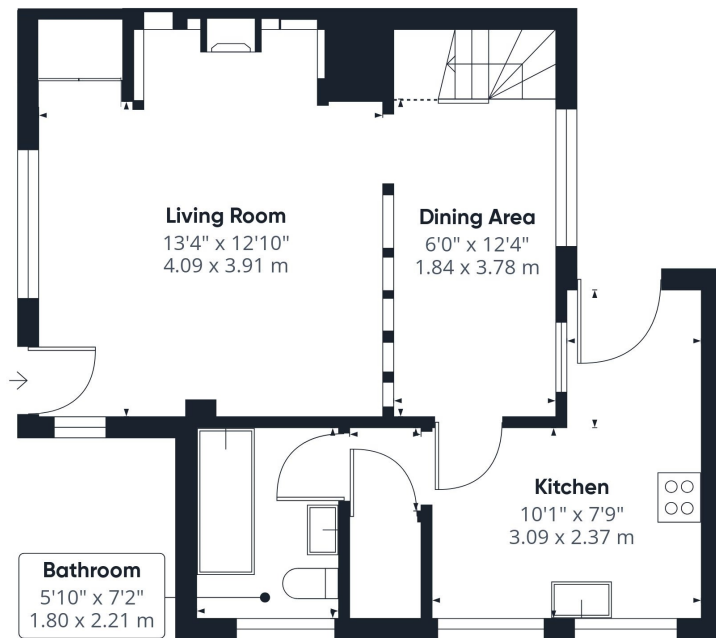
Located in Little Wymondley, this cottage offers a unique opportunity to enjoy village life while staying well-connected to nearby towns and cities. Local amenities, including shops, pubs, and schools, are within easy reach, and excellent transport links make commuting straightforward. Whether you're looking to settle in a friendly community or seeking a tranquil base from which to explore the surrounding Hertfordshire countryside, this property ticks all the boxes.

This charming two bedroom cottage in Little Wymondley is a rare find that combines comfort, style, and convenience in one attractive package. Don't miss your chance to make this wonderful property your new home. Contact us today to arrange a viewing and experience the warmth and character of this idyllic village cottage for yourself.

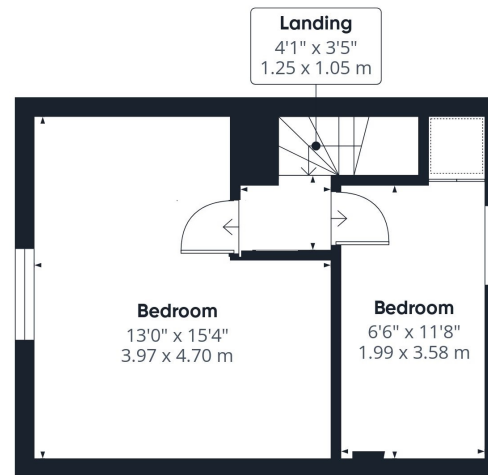
- Two bedroom semi-detached character cottage
- A range of period features including exposed beams and feature fire place
- Re-fitted bathroom suite
- Off street allocated parking space
- 8 mins, 2.5 miles drive to Hitchin Railway Station (as per Google Maps)
- NO ONWARD CHAIN







Floor 0



Floor 1

Approximate total area⁽¹⁾

721 ft²
66.9 m²

Reduced headroom

9 ft²
0.9 m²

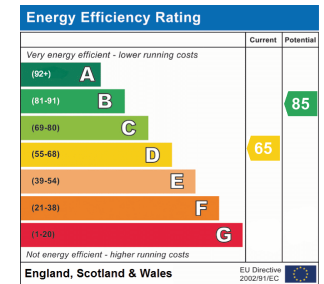
(1) Excluding balconies and terraces

Reduced headroom

..... Below 5 ft/1.5 m

Calculations reference the RICS IPMS 3C standard. Measurements are approximate and not to scale. This floor plan is intended for illustration only.

GIRAFFE360



All measurements are approximate and quoted in metric with imperial equivalents and for general guidance only and whilst every attempt has been made to ensure accuracy, they must not be relied on. The fixtures, fittings and appliances referred to have not been tested and therefore no guarantee can be given and that they are in working order. Internal photographs are reproduced for general information and it must not be inferred that any item shown is included with the property. For a free valuation, contact the numbers listed on the brochure.

Viewing by appointment only

Country Properties | 6, Brand Street | SG5 1HX

T: 01462 452951 | E: hitchin@country-properties.co.uk

www.country-properties.co.uk

country
properties