



MAURER COURT, JOHN HARRISON WAY, GREENWICH, LONDON SE10 0SW

£650,000

Spacious duplex apartment in award-winning Maurer Court in Greenwich Millennium Village, the vision of renowned architect Ralph Erskine.

The property boasts over 88 square metres of floor space with a 22ft open plan kitchen/lounge/diner, three double bedrooms, a family bathroom, ensuite shower room and downstairs WC, there is also an abundance of built in storage cupboards. The current owners have recently installed a new kitchen complete with AEG appliances, completely refurbished the bathroom and shower room, upgraded the wood flooring and added a touch of elegance with Tom Dixon designer carpet on the stairs.

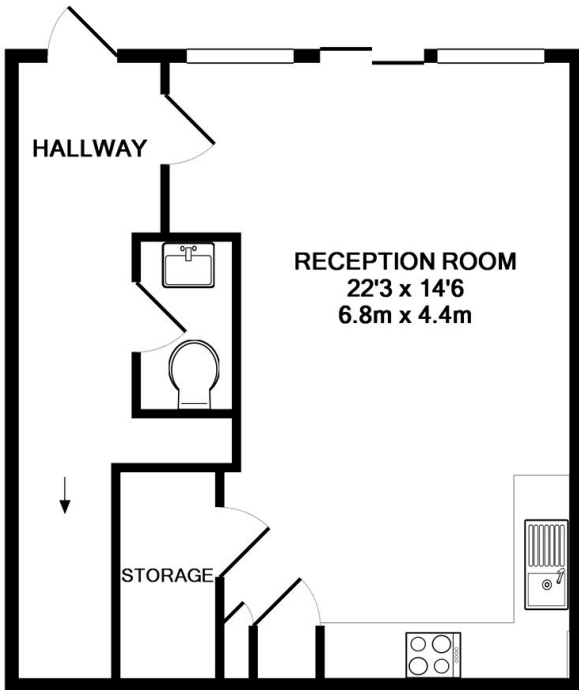
Further benefits include a private terrace, allocated secure parking space and 24 hour concierge services.

The development is located minutes from North Greenwich tube station (Jubilee Line), the Emirates Cable Cars and the O2 with the many attractions within, including bars and restaurants and shops. Other notable amenities within walking distance include, schools, the river bus, local retail park and supermarkets.

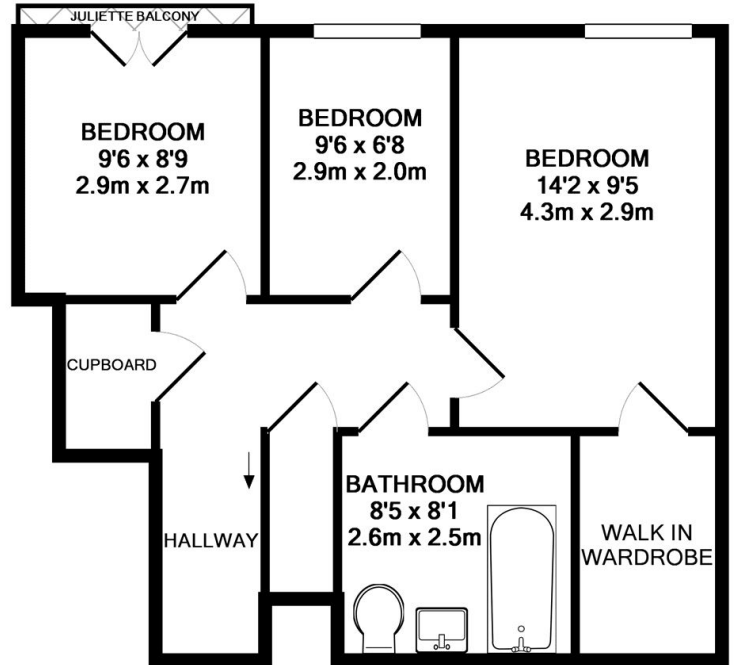
VIEWING BY APPOINTMENT WITH 1ST AVENUE. CALL: 020 8293 8600

**20 MAURER COURT, JOHN
HARRISON WAY,
GREENWICH, LONDON
SE10 0SW**

£650,000



GROUND FLOOR
APPROX. FLOOR
AREA 443 SQ.FT.
(41.2 SQ.M.)



1ST FLOOR
APPROX. FLOOR
AREA 504 SQ.FT.
(46.8 SQ.M.)

TOTAL APPROX. FLOOR AREA 947 SQ.FT. (88.0 SQ.M.)

Whilst every attempt has been made to ensure the accuracy of the floor plan contained here, measurements of doors, windows, rooms and any other items are approximate and no responsibility is taken for any error, omission, or mis-statement. This plan is for illustrative purposes only and should be used as such by any prospective purchaser. The services, systems and appliances shown have not been tested and no guarantee as to their operability or efficiency can be given
Made with Metropix ©2015

**VIEWING BY APPOINTMENT
WITH 1ST AVENUE.**

CALL: 020 8293 8600

1stavenue
Real Estate Services