



## 4 Le Jardin, Station Road, Letchworth Garden City, Hertfordshire, SG6 3BA

£420,000

An opportunity to purchase a rarely available ground floor "Maple" apartment, the largest of McCarthy & Stones platinum range. One of only 25 apartments, Beautifully proportioned and well presented throughout, it is set in heart of leafy Letchworth Garden city, close to all amenities and facilities, with great transport links by road and rail. Stylish design features with high specification abound at this two double bedroom, two bathroom home.

Available chain free, the development offers a classy residents lounge, relaxing landscaped gardens, duty manager in site and access to the 24hr Apello Care systems. It also provides guest suites for visiting relatives and friends (subject to availability and charge) On site parking likewise. There's security video entryphone, underfloor heating, oak veneered doors, a fabulous fitted kitchen and a large lounge/dining area with French doors opening to a small courtyard outside.

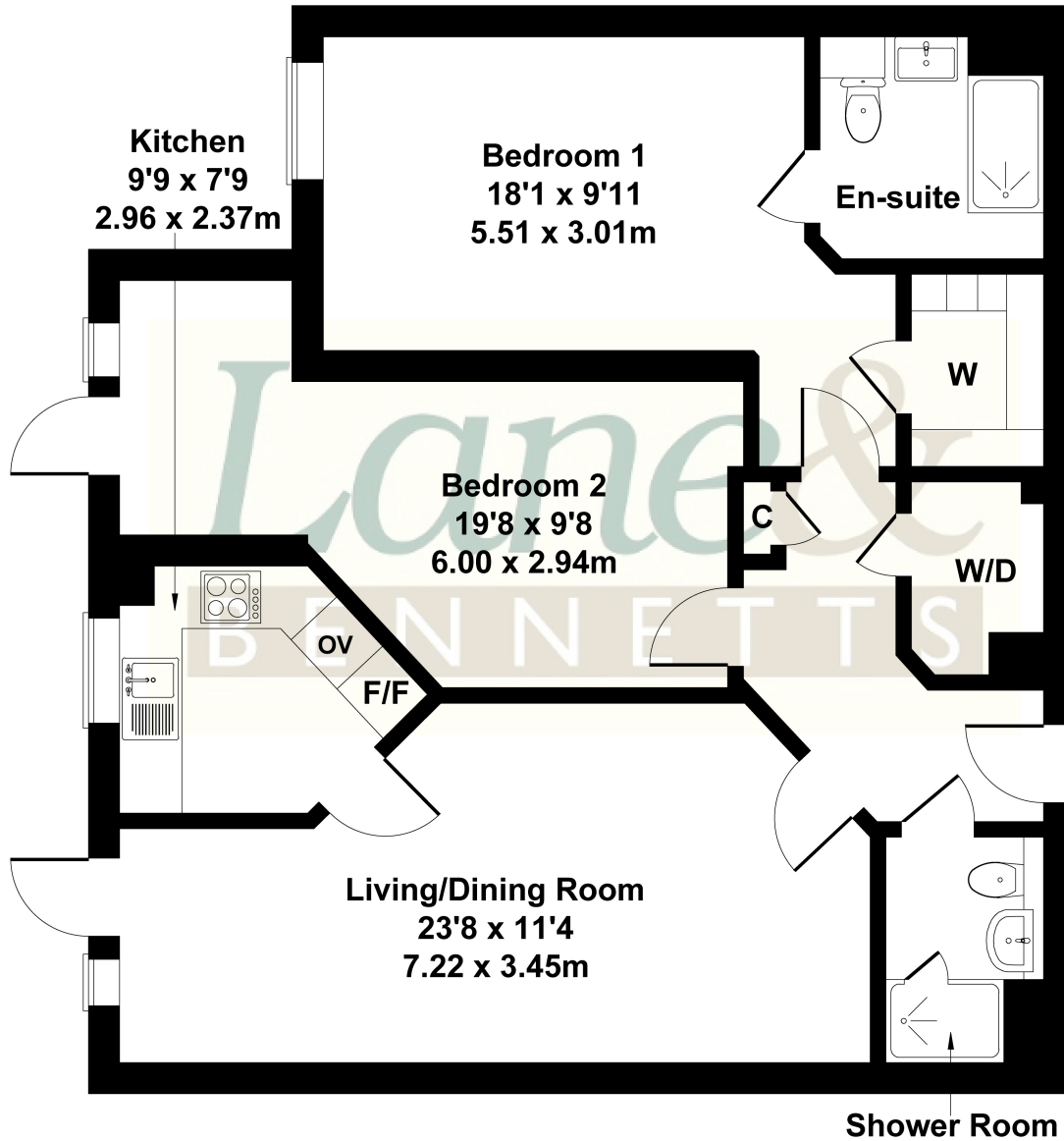
In addition, the apartment has a air filtration unit to all rooms, sky and BT points for TV & broadband, ample storage spaces and a utility cupboard housing a washer dryer. We think you will be delighted with this charming apartment where you will find the very best in retirement living...

*Lane &*  
BENNETTS



# 4 Le Jardin

Approximate Gross Internal Area  
893 sq ft - 83 sq m



Not to Scale. Produced by The Plan Portal 2025  
For Illustrative Purposes Only.

- PLATINUM RANGE PRE / POST RETIREMENT LIVING
- LARGEST STYLE OF APARTMENT
- SOUGHT AFTER GROUND FLOOR POSITION
- TWO DOUBLE BEDROOMS - MASTER EN-SUITE
- LARGE LOUNGE & DINING SPACE
- MODERN MAIN BATHROOM
- WELL FITTED KITCHEN WITH APPLIANCES
- TOWN CENTRE LOCATION CLOSE TO AMENITIES AND TRANSPORT LINKS
- WALK IN WARDROBE | STORAGE CUPBOARD HOUSING WASHER/DRYER
- SIZEABLE RESIDENTS LOUNGE AND LANDSCAPED GARDENS

