

Minsterley Avenue, Shepperton, TW17 8QT

£785,000



- Fantastic Five Bedroom Detached Family Home
- Large Kitchen/Breakfast Room
- Garage and Driveway Parking
- Beautifully Maintained Garden with Summer House
- Sought After Residential Location
- Separate Lounge and Dining Room
- Two Bathrooms and Downstairs Cloakroom
- Freehold, Council Tax Band G £3840

58 Minsterley Avenue

Approximate Gross Internal Area = 167.6 sq m / 1804 sq ft
 Garage / Shed = 34.5 sq m / 371 sq ft
 Total = 202.1 sq m / 2175 sq ft

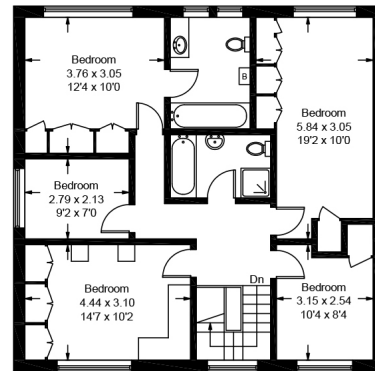
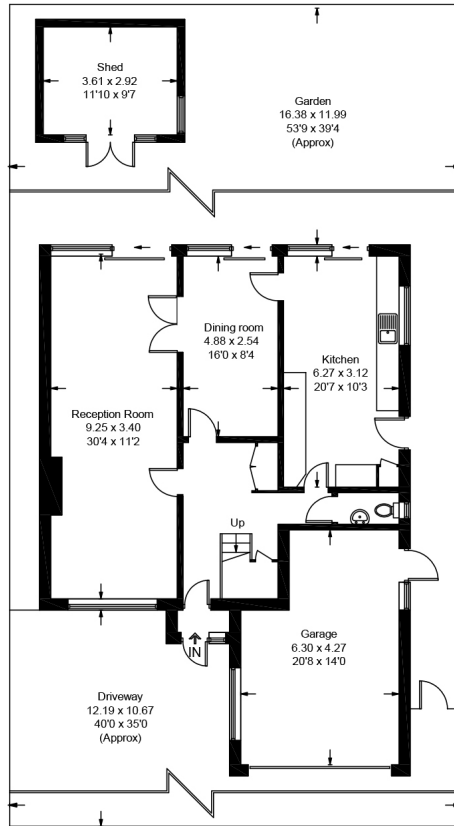
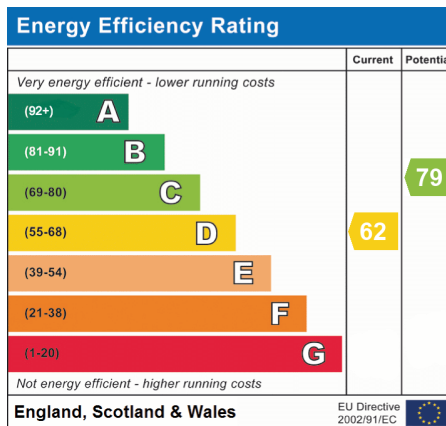


Illustration for identification purposes only, measurements are approximate, not to scale. floorplansUsketch.com © (ID1071164)



We have not tested the services or domestic appliances so we cannot verify that they are in working order. The buyer is advised to obtain verification from their solicitor or surveyor. These particulars form no part of any offer or contract and their accuracy cannot be guaranteed.