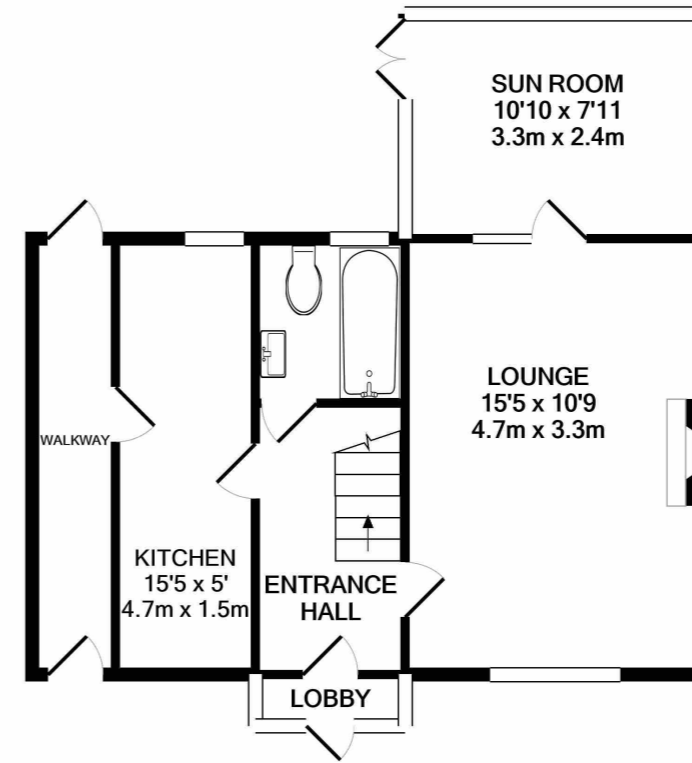


66 Brixham Road, Reading, Berkshire. RG2 7RB.

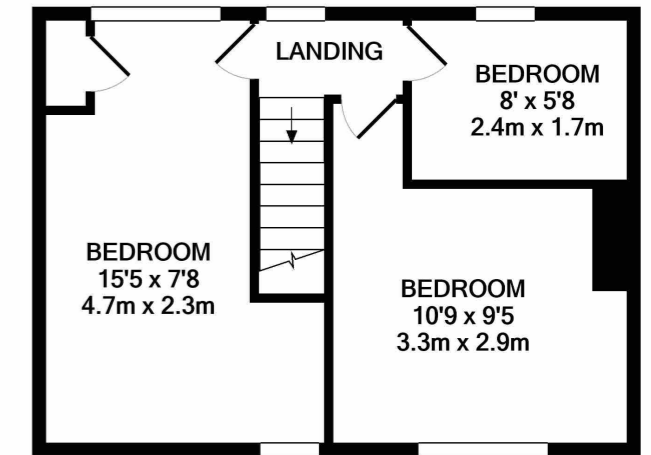
£305,000 Freehold

Situated in a popular location within convenient access to Reading Town Centre, Reading University, Green Park and junction 11 of the M4 motorway, is this three bedroom semi-detached home. Ground floor accommodation comprises lobby, entrance hall, lounge, lean to sun room, kitchen and bathroom. To the first floor there are three bedrooms. Further benefits include double glazed windows, side covered storage area, a good sized rear garden with a large shed with lighting and power.

- Semi Detached
- Three Bedrooms
- Lounge
- Lean To Sun Room
- Block Paved Driveway
- Large Rear Garden
- Large Storage Shed



GROUND FLOOR



1ST FLOOR

Whilst every attempt has been made to ensure the accuracy of the floor plan contained here, measurements of doors, windows, rooms and any other items are approximate and no responsibility is taken for any error, omission, or mis-statement. This plan is for illustrative purposes only and should be used as such by any prospective purchaser. The services, systems and appliances shown have not been tested and no guarantee as to their operability or efficiency can be given  
Made with Metropix ©2021

Property Description

Ground Floor

Lobby

Entrance Hall

Lounge

15' 5" x 10' 9" (4.70m x 3.28m)

Lean To

10' 10" x 7' 11" (3.30m x 2.41m)

Kitchen

15' 5" x 5' 0" (4.70m x 1.52m)

Bathroom

First Floor

Landing

Bedroom One

15' 5" x 7' 8" (4.70m x 2.34m)

Bedroom Two

10' 9" x 9' 5" (3.28m x 2.87m)

Bedroom Three

8' 0" x 5' 8" (2.44m x 1.73m)

Outside

Front Garden With Driveway

Large Garden

Large Shed With Light & Power

Council Tax Band

C

