

KIPLING ROAD 45% SHARED OWNERSHIP £103,500

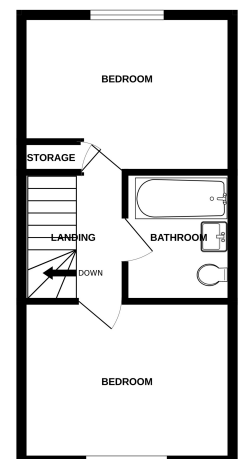
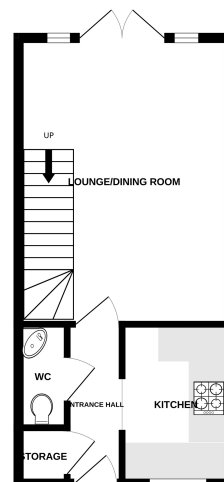


Key Features

- ✓ Set at the end of a cul-de-sac.
- ✓ Immaculately Presented Mid-Terraced House.
- ✓ Two Double Bedrooms.
- ✓ Enclosed Garden.
- ✓ Two Off Road Parking Spaces.



GROUND FLOOR
319 sq.ft. (29.7 sq.m.) approx.



TOTAL FLOOR AREA: 639 sq.ft. (59.3 sq.m.) approx.
As per Measure 1000