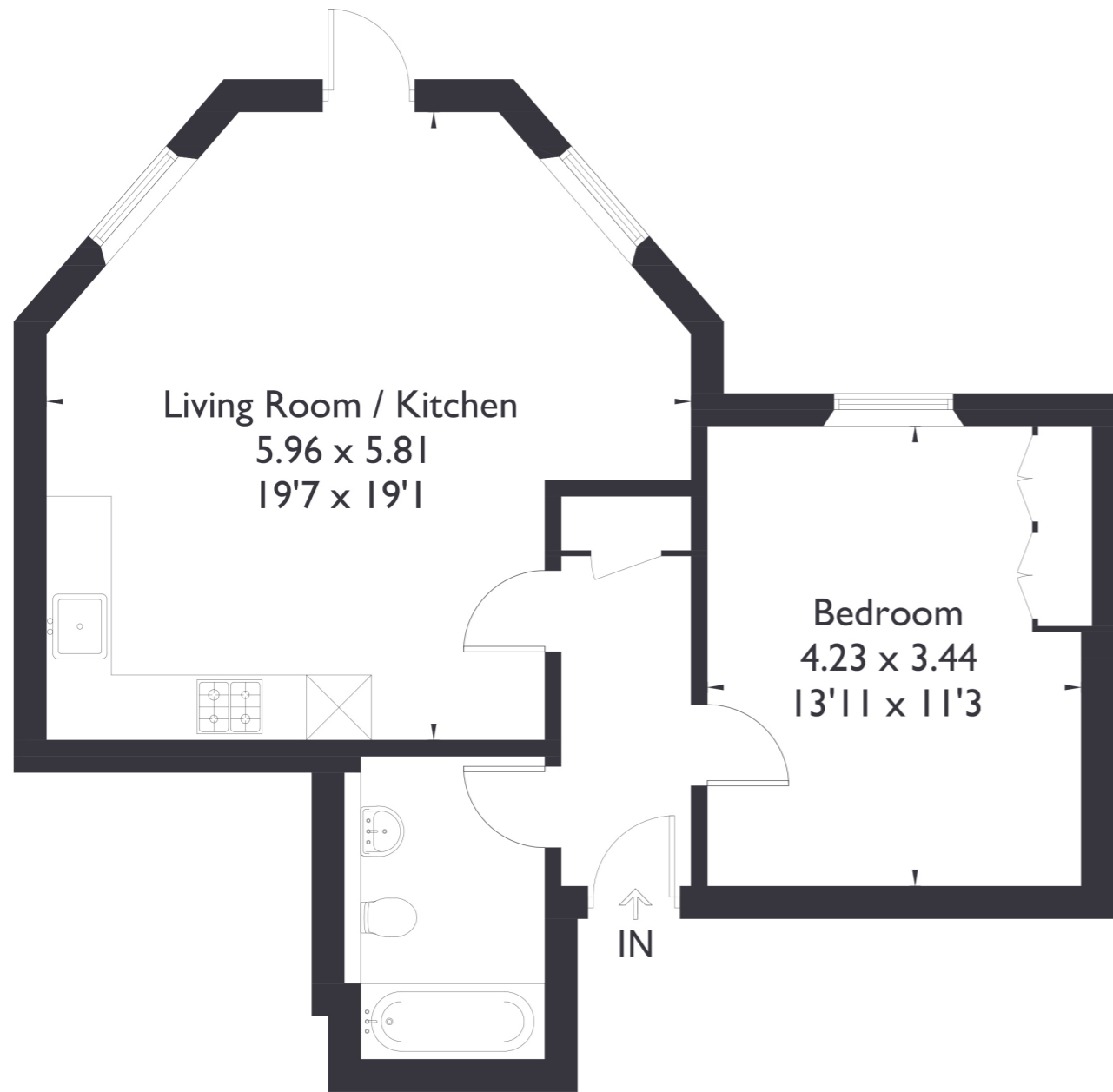


Clerkenwell House, Hilda Road Southall, UB2  
Approximate Floor Area = 53.7 sq m / 578 sq ft



## Ground Floor



### 1 BEDROOM FLAT

**Hilda Road, UB2**  
**£320,000**

Welcome to your ideal urban retreat! This beautifully crafted one bedroom, one bathroom property is situated in a prime location within the prestigious St. Bernard's development. Clerkenwell House exemplifies the extensive conversion of Grade II listed period buildings into luxurious contemporary apartments, each with bespoke allure and distinctive character.

### FEATURES

- One Bedroom
- One Bathroom
- Open Plan Kitchen/Living
- Secure Gated Development
- Landscaped Communal Gardens
- Hanwell Station (Elizabeth Line)
- EPC Rating C



1 BEDROOM FLAT

Hilda Road, UB2  
£320,000

The interior exudes warmth and sophistication, featuring a well designed, open plan kitchen and living area that leads out to the communal gardens.

The spacious bedroom is a tranquil haven with ample storage. Unique windows allow natural light to illuminate the living spaces, creating an inviting and airy atmosphere. EPC Rating C.

