

SOLE
AGENT

1 Les Caches Cottages

La Route Des Cornus | St Martin | GY4 6PR

Recently decorated end-terrace home conveniently located in the heart of St Martin with the village amenities all within comfortable walking distance. Accommodation comprises lounge, kitchen/diner, two double bedrooms, study and a bathroom. The property benefits from a front and rear garden and parking for one car. Regret no smokers or pets. Would suit a mature or professional couple. Available immediately. Please note the Landlord does not supply any white goods.

2 BEDROOMS

1 BATHROOM

1 RECEPTION

£1,800pcm

Shields
& Rutland

PHOTOS



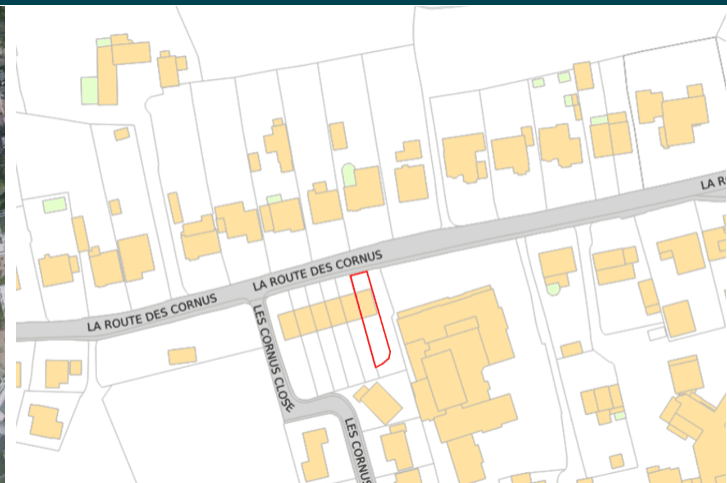
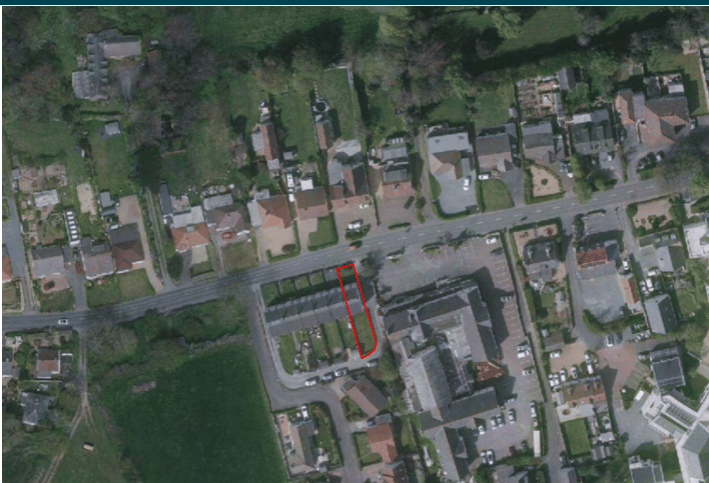
PHOTOS



PHOTOS



SPECIFICATIONS



Lounge/Diner

4.49m x 3.37m (14' 9" x 11' 1")

Kitchen

4.06m x 3.25m (13' 4" x 10' 8")

Bedroom 1

3.54m x 3.41m (11' 7" x 11' 2")

Bedroom 2

3.54m x 3.41m (11' 7" x 11' 2")

Study

2.37m x 1.77m (7' 9" x 5' 10")

Bathroom

2.38m x 2.10m (7' 10" x 6' 11")

Garden

Front and rear garden both laid to lawn.

Parking

There is parking for one car.

PRICE INCLUDES

Carpets and light fittings.

SPECIAL FEATURES

- Convenient location
- Spacious accommodation
- Amenities close by

SERVICES

Mains water, electricity and drainage.

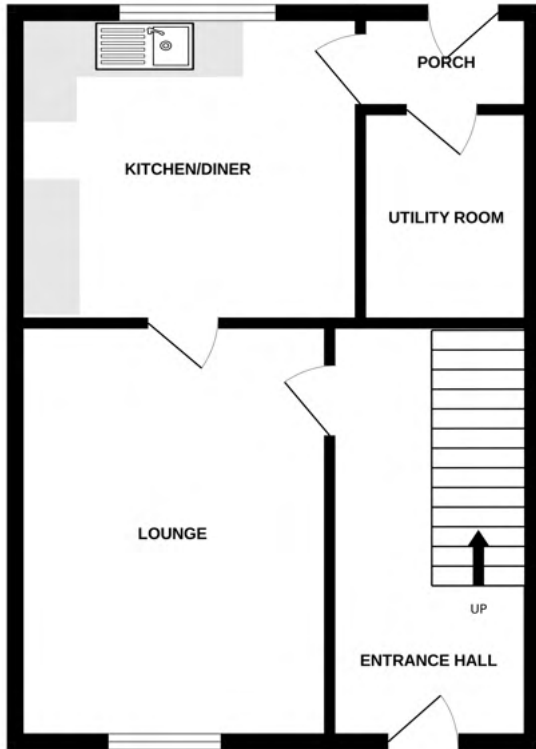
APPLIANCES INCLUDED

Landlord does not supply any white goods.

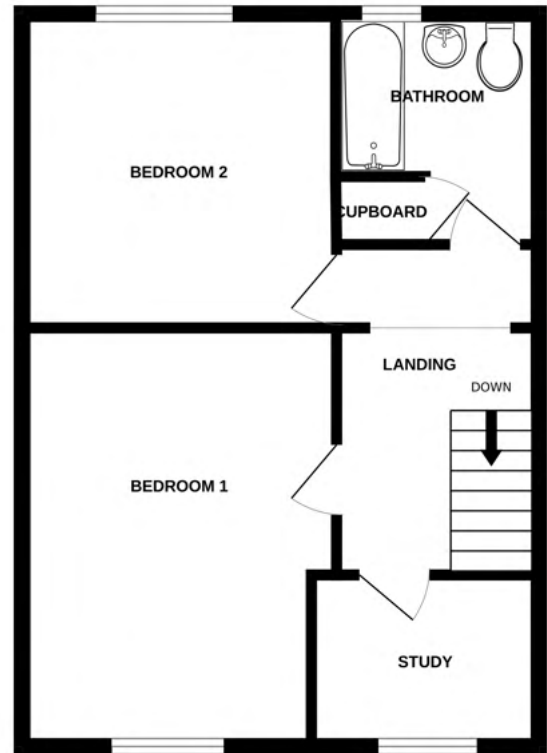
SCHOOL CATCHMENT

St Martins Primary School
and Les Beaucamps High School

GROUND FLOOR



1ST FLOOR



1 LES CACHES COTTAGES

Whilst every attempt has been made to ensure the accuracy of the floorplan contained here, measurements of doors, windows, rooms and any other items are approximate and no responsibility is taken for any error, omission or mis-statement. This plan is for illustrative purposes only and should be used as such by any prospective purchaser. The services, systems and appliances shown have not been tested and no guarantee as to their operability or efficiency can be given.
Made with Metropix ©2024