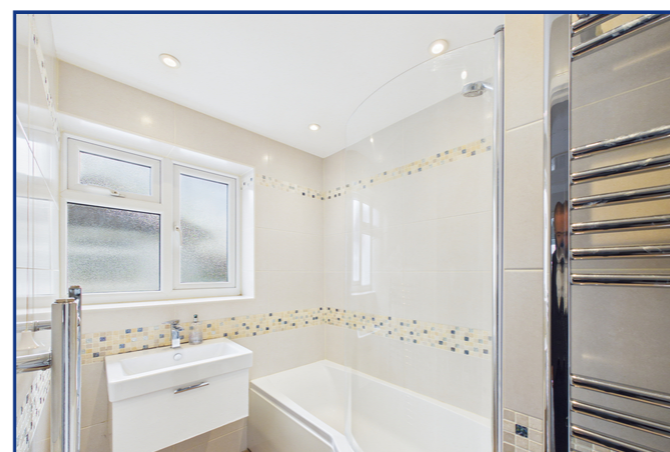
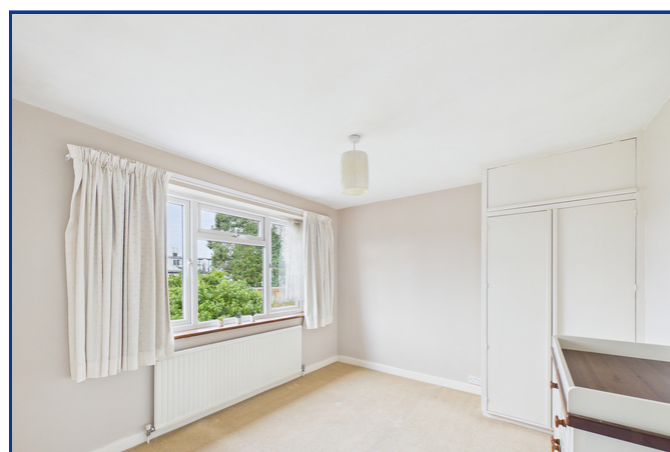
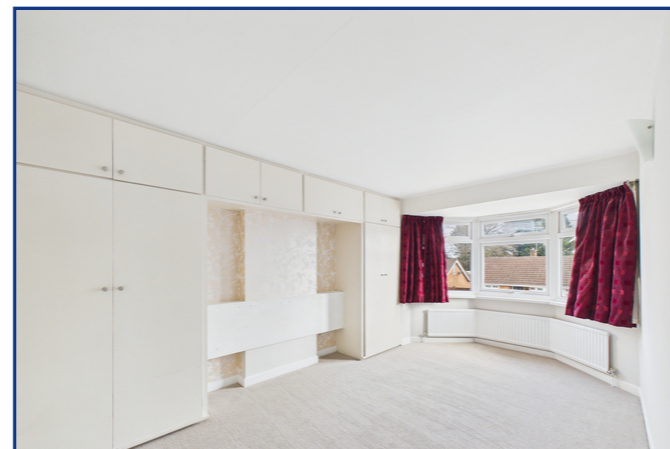
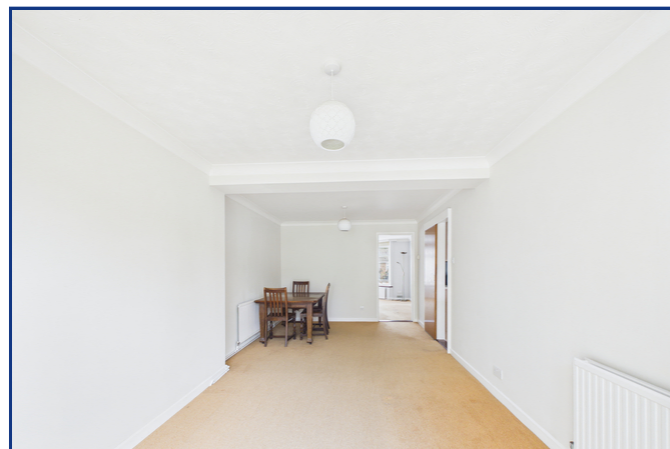


18 Repton Road, Earley, Reading, Berkshire. RG6 7LJ.



3 Maiden Lane Centre  
Berkshire  
Reading RG6 3HD  
Tel: 0118 926 8260  
www.arins.co.uk



18 Repton Road, Earley, Reading, Berkshire. RG6 7LJ.

£575,000 Freehold

\*\*\*NO ONWARD CHAIN\*\*\* Situated in a highly desirable residential location, within easy reach of well-regarded schools including Maiden Erlegh, excellent transport links, with Earley Train Station a short walk away, and a wide range of local amenities, this attractive three bedroom semi-detached home offers spacious accommodation and superb potential for further enhancement.

- Extended Semi Detached Home
- Two Reception Rooms
- Large Galley Kitchen
- Three Bedrooms
- Driveway Parking
- Garage
- South West Facing Garden
- No Onward Chain

These particulars, whilst believed to be accurate are set out as a general outline only for guidance and do not constitute any part of an offer or contract. Intending purchasers should not rely on them as statements or representation of fact, but must satisfy themselves by inspection or otherwise as to their accuracy. We have not carried out a detailed survey nor tested the services, appliances and specific fittings. Room sizes should not be relied upon for carpets and furnishings. The measurements given are approximate. No person in this firm's employment has the authority to make or give any representation or warranty in respect of the property.



Covering Reading, Earley, Lower Earley, Tilehurst, Woodley, Shinfield, Caversham and all other surrounding areas

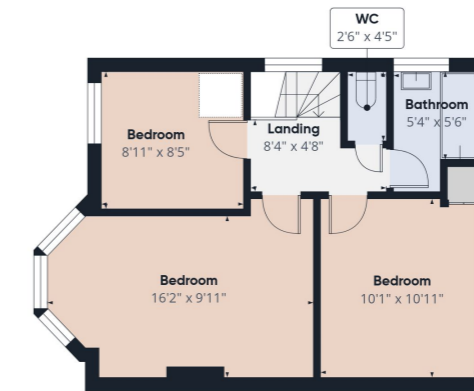
18 Repton Road, Earley, Reading, Berkshire. RG6 7LJ.



Have you visited our website for our latest property listings?  
www.arins.co.uk



Floor 0



Floor 1

Approximate total area<sup>m</sup>  
1174 ft<sup>2</sup>

(1) Excluding balconies and terraces

Calculations reference the RICS IPMS 3C standard. Measurements are approximate and not to scale. This floor plan is intended for illustration only.

GIRAFFE360



Property Description

Council Tax Band

D

