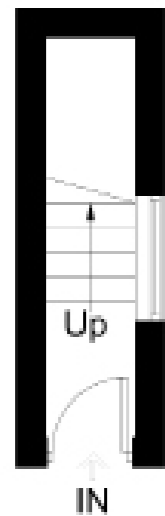


Northfield Avenue, W13

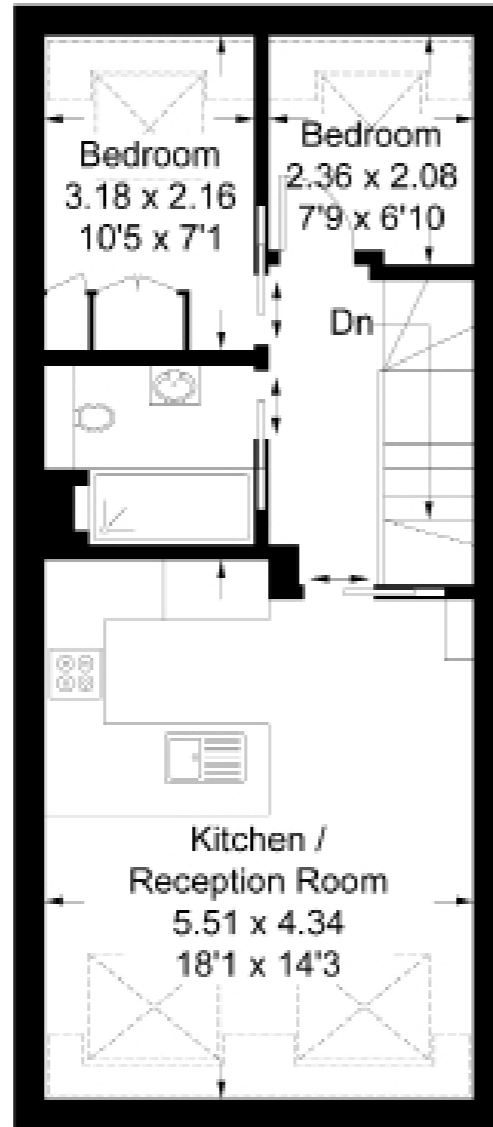
Approximate Gross Internal Area = 51 sq m / 550 sq ft
(Including Reduced Headroom)
Reduced Headroom = 4.6 sq m / 50 sq ft
Total = 46.4 sq m / 500 sq ft
(Excluding Reduced Headroom)



 = Reduced Headroom



First Floor



Second Floor



2 BEDROOM FLAT

Northfield Avenue, W13
£400,000

This exceptional two bedroom second floor flat is in a prime location overlooking Northfield allotments.

Elegantly refurbished by the current owners with a keen eye for detail, it has been designed to meet the needs of modern living.

FEATURES

- Chain Free
- Two Bedrooms
- One Bathroom
- Open Plan Kitchen/Living
- Loft Storage
- Underfloor heating
- Northfields Station
- West Ealing (Elizabeth Line)
- High Spec Fixtures & Fittings
- EPC Rating D

Measured in accordance with RICS Code of Measuring Practice. To be used for identification and guidance purposes only. Whilst every care is taken in the preparation of this plan, please check all dimensions, shapes and compass bearings before making any decisions reliant upon them. www.london58.com © 2020 hello@london58.com



2 BEDROOM FLAT
Northfield Avenue, W13
 With perfectly balanced open plan living, kitchen and dining space mixed with quieter rooms, this home is perfect for young professionals.

Equidistant from three main transport hubs, the local connections are ideal for commuters with Ealing Broadway, Northfields tube and West Ealing Crossrail station only minutes away. A high standard of fixtures and fittings ensure this a turnkey solution for buyers wanting to move straight in.

