

Truuli



Upper Shirley Road, Croydon, Surrey, CR0

£2,600 pcm Freehold

- Four bedroom detached house
- Good condition throughout
- Close to transport & amenities
- Modern fitted kitchen /Dining room
- Two reception rooms
- Fitted family bathroom with separate shower cubicle
- Downstairs cloakroom
- Utility room
- Large landscaped garden
- Off street parking for 4 cars

2, Lansdowne Road, Croydon, Surrey, CR9 2ER

Tel: 0330 043 0002

Email: save@truuli.co.uk Web: www.truuli.co.uk

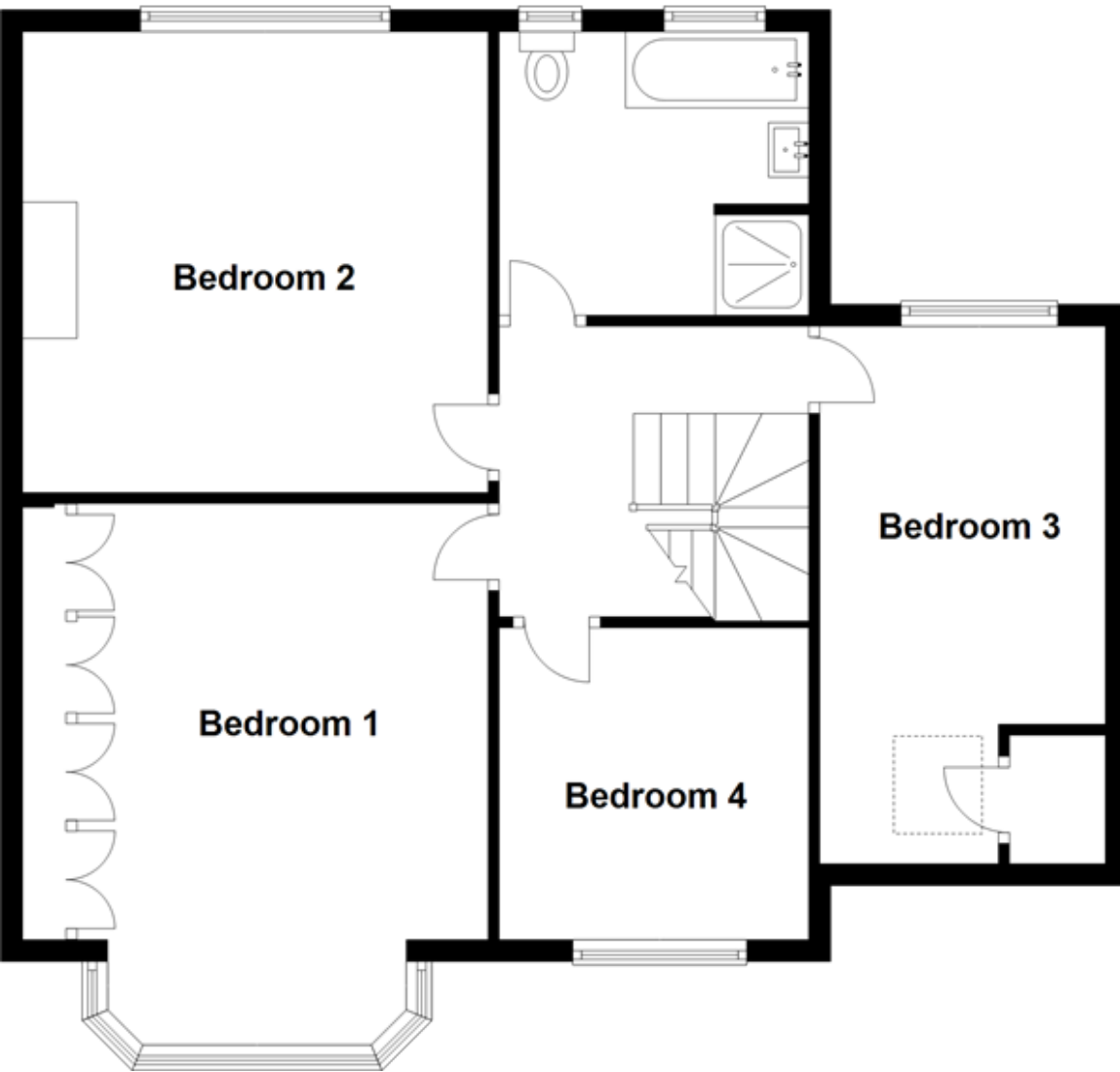
Upper Shirley Road, Croydon, Surrey, CR0

£2,600 pcm Freehold

A substantial four bedroom detached house with a huge landscaped garden, presented in good condition throughout.

First Floor

Approx. 76.2 sq. metres (820.7 sq. feet)



Energy Efficiency Rating		Current	Potential
Very energy efficient - lower running costs			
(92-100)	A		
(81-91)	B		
(69-80)	C		73
(55-68)	D		
(39-54)	E	46	
(21-38)	F		
(1-20)	G		
Not energy efficient - higher running costs			
England, Scotland & Wales		EU Directive 2002/91/EC	

