

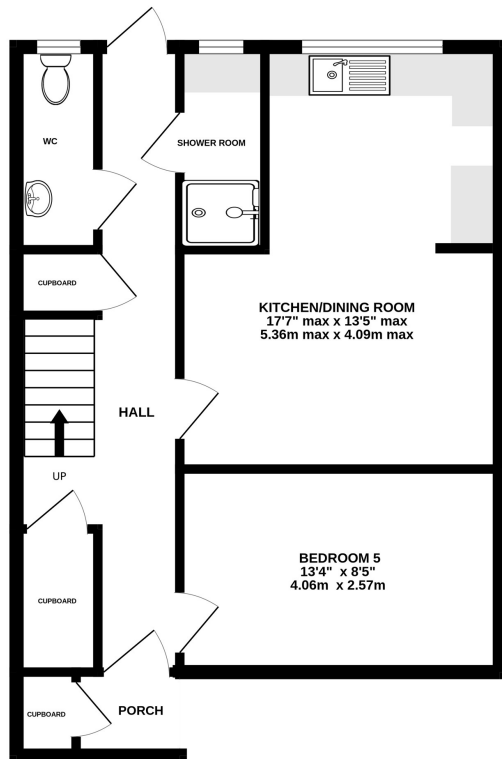
Wilcox Gardens, Shepperton, TW17 0QY

£495,000

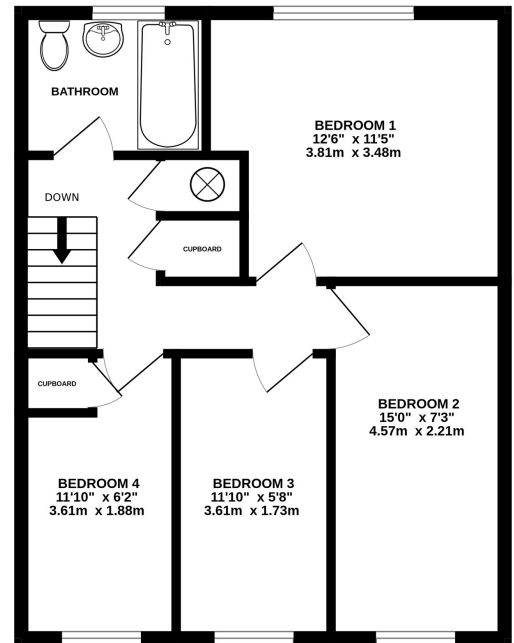


- 4/5 Bedroom Semi Detached House
- Close to Shepperton Studios
- Secluded Rear Garden
- Two Bathrooms
- Quiet Cul De Sac Location
- Driveway
- Potential to Modernise and Extend (STPP)
- Freehold, EPC Rating C

GROUND FLOOR
546 sq.ft. (50.7 sq.m.) approx.

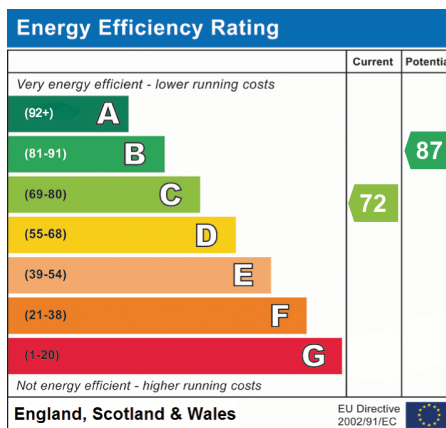


1ST FLOOR
523 sq.ft. (48.6 sq.m.) approx.



TOTAL FLOOR AREA : 1068 sq.ft. (99.3 sq.m.) approx.

Whilst every attempt has been made to ensure the accuracy of the floorplan contained here, measurements of doors, windows, rooms and any other items are approximate and no responsibility is taken for any error, omission or mis-statement. This plan is for illustrative purposes only and should be used as such by any prospective purchaser. The services, systems and appliances shown have not been tested and no guarantee as to their operability or efficiency can be given.
Made with Metropix ©2025



We have not tested the services or domestic appliances so we cannot verify that they are in working order. The buyer is advised to obtain verification from their solicitor or surveyor. These particulars form no part of any offer or contract and their accuracy cannot be guaranteed.