

£269,995
Freehold



THOMAS CONNOLLY
ESTATE AGENTS | LETTING AGENTS | NEW HOMES | PROPERTY MANAGEMENT

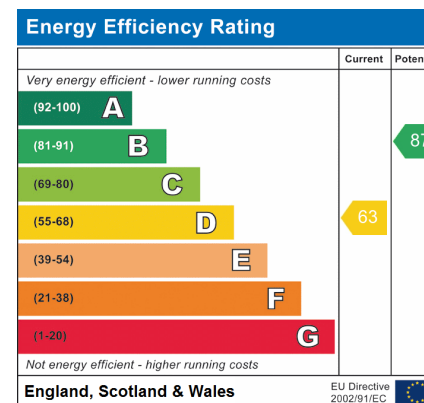


Summary of Property

Thomas Connolly Estate Agents are pleased to present this semi-detached, two bedroom property situated in the sought after location of Wavendon Gate, which offers close proximity to Caldecotte Lake, Walton High and Wavendon primary schools, M1 junctions 13 and 14 and Milton Keynes railway station.

The accommodation in brief comprises of; ground floor - kitchen and sitting room with bay window. The first floor offers two bedrooms with bay window in the second bedroom and a family bathroom. This property also benefits from a single garage and both front and rear gardens.

Please contact us for further information or to confirm your viewing appointment.



Room Descriptions

GROUND FLOOR

KITCHEN

11' 7" x 9' 6" (3.53m x 2.90m)

SITTING ROOM

15' 4" x 11' 7" (4.67m x 3.53m)

FIRST FLOOR

BEDROOM ONE

11' 7" x 9' 11" (3.53m x 3.02m)

BEDROOM TWO

11' 7" x 8' 9" (3.53m x 2.67m)

FAMILY BATHROOM

EXTERIOR

SINGLE GARAGE

FRONT AND REAR GARDENS

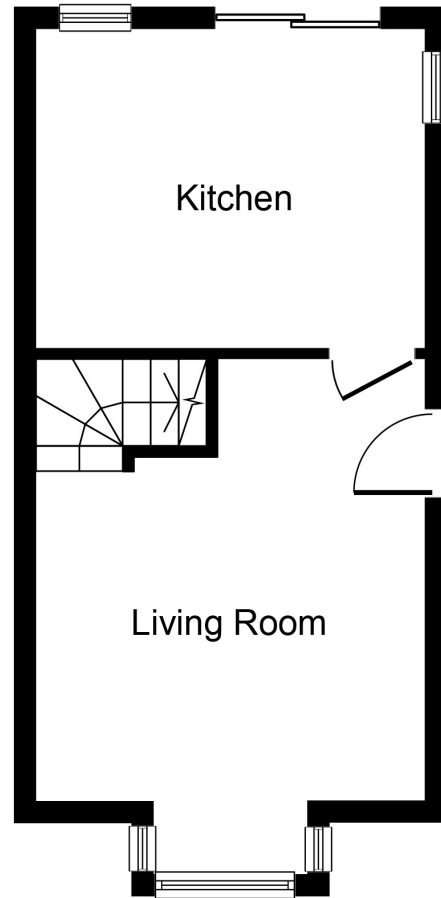
PLEASE NOTE

These property particulars do not constitute part or all of an offer or contract. All measurements are stated for guidance purposes only and may be incorrect. Details of any contents mentioned are supplied for guidance only and must also be considered as potentially incorrect. Thomas Connolly Estate Agents advise perspective buyers to recheck all measurements prior to committing to any expense. We confirm we have not tested any apparatus, equipment, fixtures, fittings or services and it is within the prospective buyers interests to check the working condition of any appliances prior to exchange of contracts. Thomas Connolly Estate Agents has not sought to verify the legal title of the property and the buyers must obtain verification from their solicitor

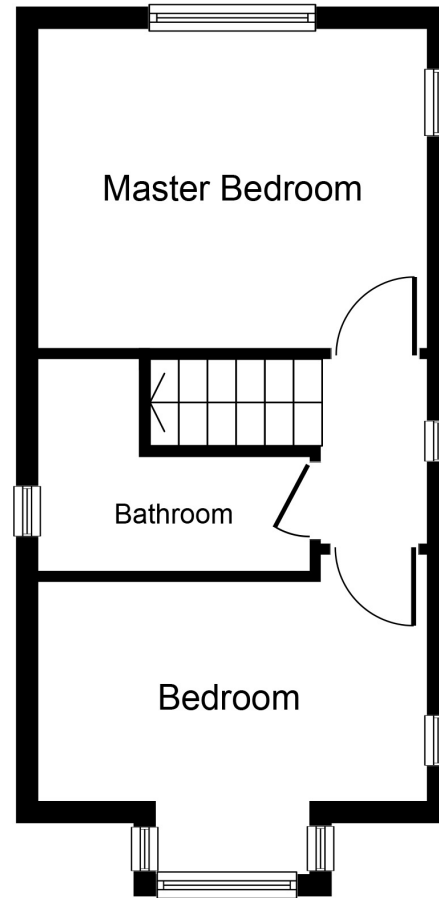


THOMAS CONNOLLY

ESTATE AGENTS | LETTING AGENTS | NEW HOMES | PROPERTY MANAGEMENT



Ground Floor



First Floor

Whilst every attempt has been made to ensure the accuracy of the floor plan contained here, measurements of doors, windows, rooms and any other items are approximate and no responsibility is taken for any error, omission, or mis-statement. This plan is for illustrative purposes only and should be used as such by any prospective purchaser or tenant. The services, systems and appliances shown have not been tested and no guarantee as to their operability or efficiency can be given.

Copyright V360 Ltd 2023 | www.houseviz.com