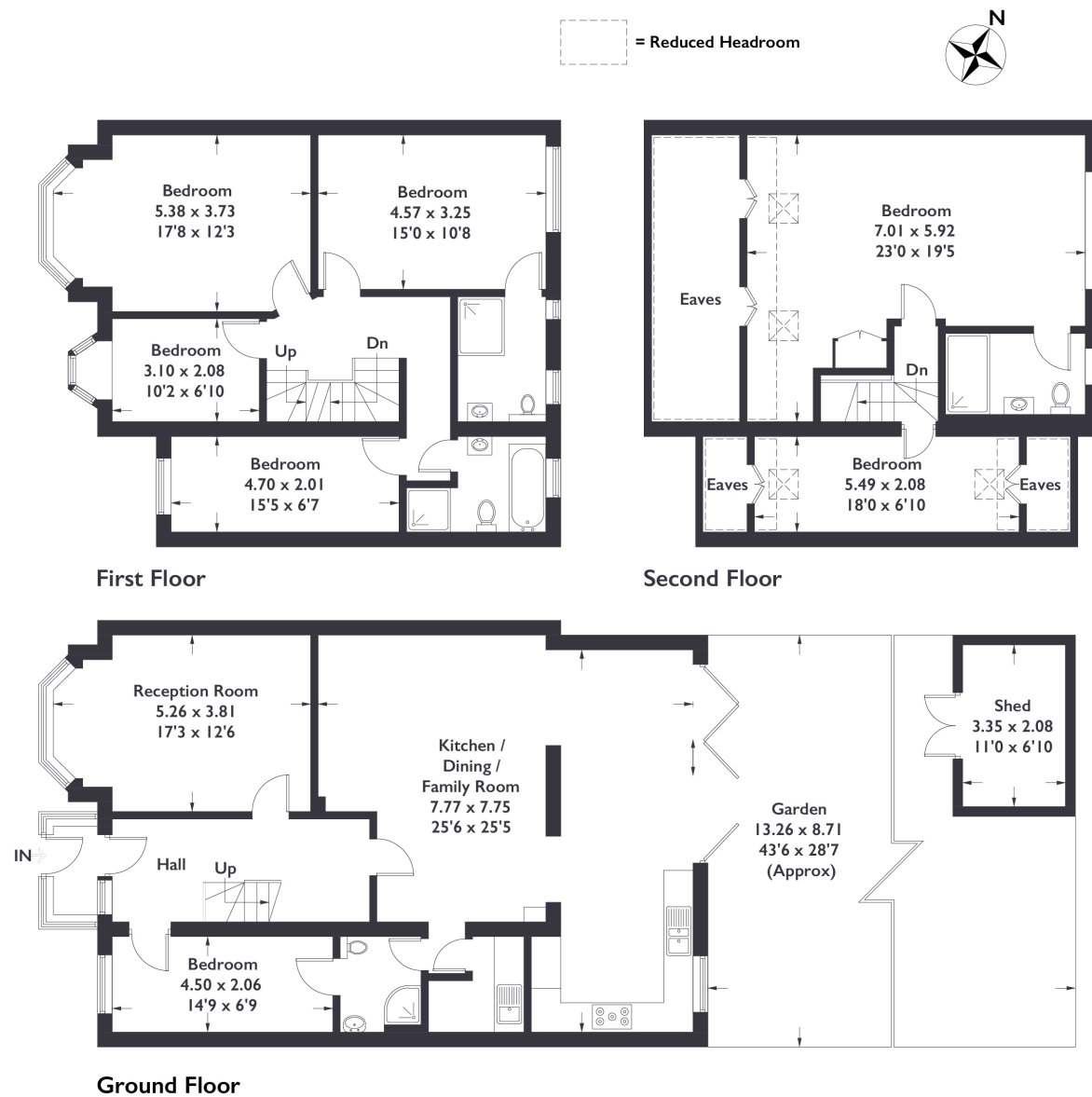


Southdown Avenue, W7

Approximate Gross Internal Area = 248.6 sq m / 2677 sq ft
(Including Eaves / Reduced Headroom)



Measured in accordance with RICS Code of Measuring Practice. To be used for identification and guidance purposes only. Whilst every care is taken in the preparation of this plan, please check all dimensions, shapes and compass bearings before making any decisions reliant upon them. www.london58.com © 2023 hello@london58.com



6 BEDROOM HOUSE

Southdown Avenue, W7

£1,375,000

This semi-detached house offers a perfect blend of classic charm and modern elegance. The property has recently undergone a meticulous refurbishment, showcasing a sophisticated design that complements the home's size and character. With a total of six bedrooms and four bathrooms, this residence provides ample space for a growing family or those who desire room for guests.

FEATURES

- Six Bedrooms
- Four Bathroom
- Open Plan Kitchen/Diner
- Off-Street Parking
- Elthorne Park High School
- Boston Manor Station
- EPC Rating E



6 BEDROOM HOUSE

Southdown Avenue, W7

The property boasts a spacious kitchen and dining area, along with a versatile reception room.

Abundant natural light streams through the charming bay windows, creating a warm and welcoming atmosphere. The well-maintained garden provides a tranquil outdoor retreat, and off-street parking enhances daily convenience. Located near Boston Manor Station and the A4 Great West Road, this property combines classic charm with modern comfort, making it an exceptional find in a prime location. EPC Rating E.

