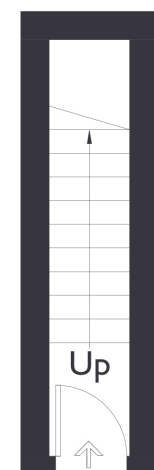
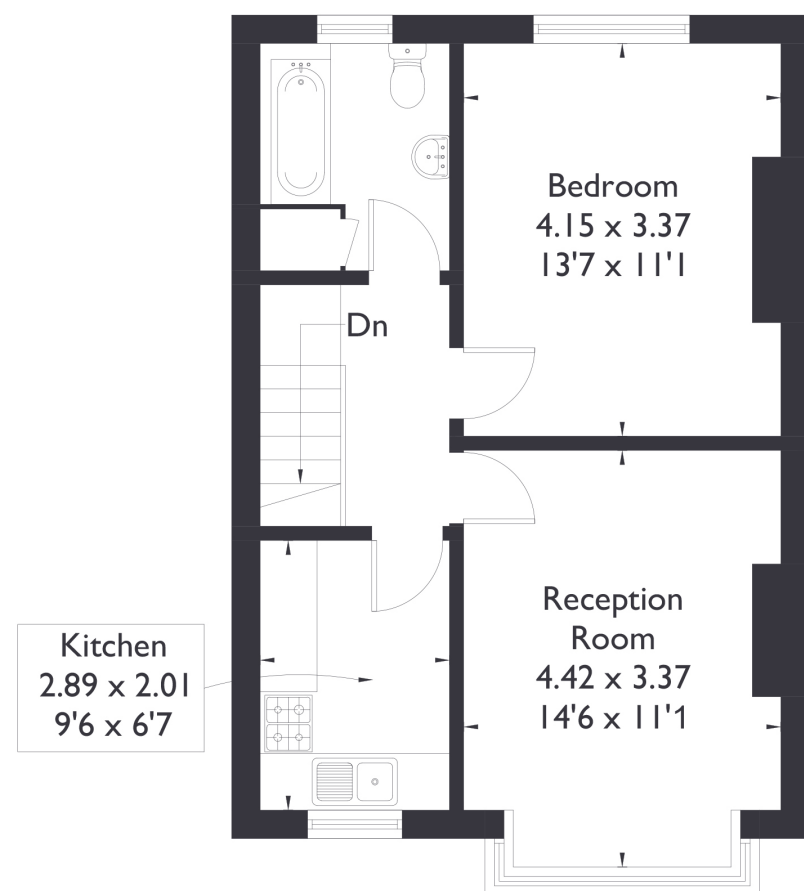


## Raymond Avenue, W13

Approximate Floor Area = 49.7 sq m / 535 sq ft



Ground Floor



First Floor



### 1 BEDROOM FLAT

## Raymond Avenue, W13

£395,000

A beautifully presented one-bedroom top-floor flat set within a charming period building on a highly sought-after residential road in Northfields.

This bright and spacious home has been recently redecorated and re-carpeted, offering a fresh, modern interior throughout. The accommodation includes a generous double bedroom, a large and separate reception room, a contemporary fitted kitchen, and a stylish, well-appointed bathroom.

### FEATURES

- One Bedroom
- One Bathroom
- Separate Kitchen And Living Space
- Recently Refurbished
- Northfield Avenue Amenities
- Northfield Station/ Boston Manor Station
- EPC Rating C



1 BEDROOM FLAT

# Raymond Avenue, W13

£395,000

The property is offered to the market with no onward chain, making it an ideal choice for first time buyers or investors.

The flat also enjoys easy access to Northfields' vibrant Avenue with its wide range of shops, cafés, and amenities, as well as Northfields Underground Station (Piccadilly Line).

Boston Manor Underground Station is also nearby, providing excellent connectivity to Heathrow and Central London, along with additional local shops, parks, and transport links.

EPC Rating C.

