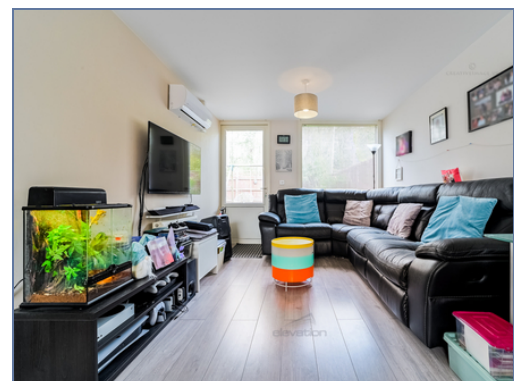




9 Swanson Drive, Oxley Park, Milton Keynes, Buckinghamshire, MK4 4GW

£275,000 Freehold

- Two large double bedrooms
- Green Outlook
- Upgraded Kitchen
- Air Con throughout
- Two Electric Car Points
- Private garden overlooking woodland
- EPC- C
- Council Tax Band- C
- Eco Home
- EPC Rating





A spacious and modern two bedroom Eco home in the heart of the forward-thinking city of Milton Keynes

This two-bedroom Eco house is a great opportunity for families and professionals alike. Lovely and bright throughout, due to large triple glazed windows, this purpose-built Eco home has an open plan ground floor, with a large kitchen living space which leads onto a large, private, landscaped rear garden. Featuring a spacious enclosed utility room and under stairs storage, the property is built with storage in mind. The open kitchen features a gas hob and another example of large windows, keeping the space bright throughout the day.

The large garden backs onto woodland and is low maintenance itself with astroturf and tiles. The property has EV charging to the front with space for two tandem parking spaces.

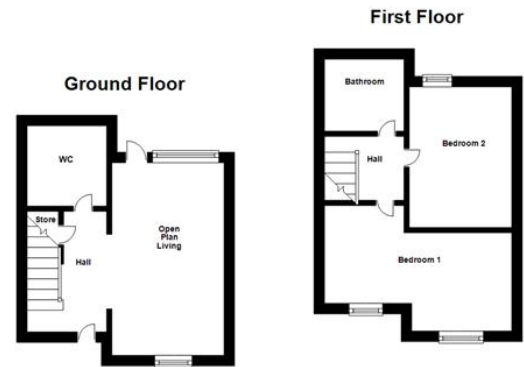
The stairs are lit up by a large skylight window above and lead to two double bedrooms alongside a family bathroom. Both bedrooms have access to Air Conditioning and feature high ceilings, helping the property feel more open, spacious and comfortable year-round.

Throughout the property installed is air conditioning, featuring a cooling, heating and fan mode

Local schools, green areas and the economic build style of the estate lead this to be a very desirable area to live in the modern city that is Milton Keynes.

Disclaimer

Whilst we have endeavoured to prepare our sales particulars accurately none of the services, appliances or equipment have been tested. A buyer should satisfy themselves on such matters prior to purchase. Any measurements or distances mentioned in these particulars are for guide reference only. If such particulars are fundamental to a purchase, buyers should rely on their own enquiries. All enquiries should be directed to Elevation Estate Agents in the first instance.



Floor plans are for layout purposes only. Measurements are approximate and subject to inaccuracies
Plan produced using PlanUp.