

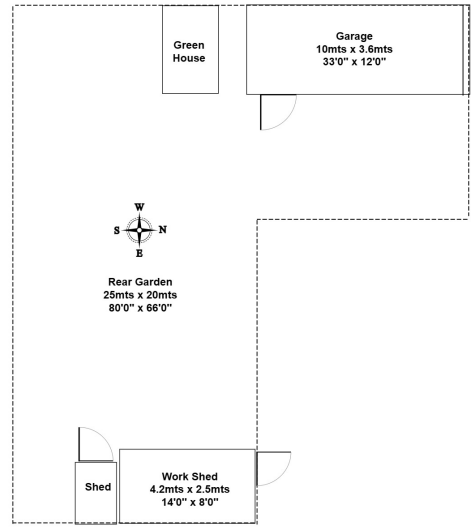
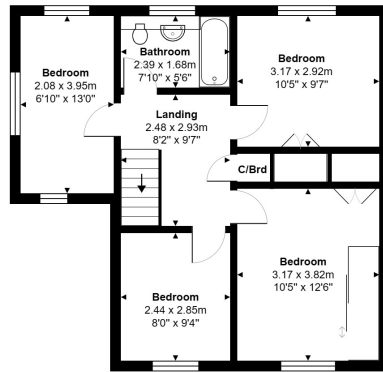
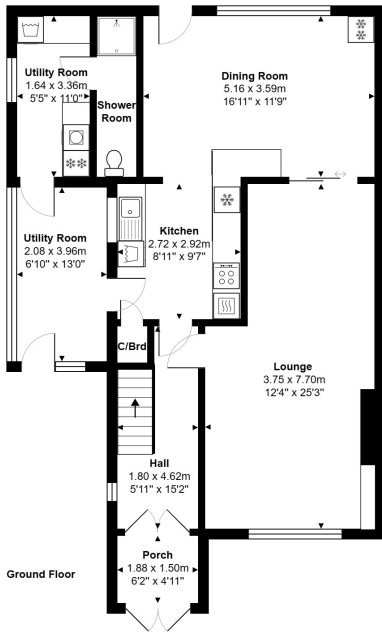


Jordans Close, Stanwell, Staines-upon-Thames, Surrey, TW19 7PU

HUGELY SPACIOUS FOUR BEDROOM-SEMI DETACHED PROPERTY SITUATED LOCATED AT THE REAR OF THIS POPULAR CLOSE IDEALLY POSITIONED FOR LOCAL MOTORWAY NETWORKS & HEATHROW AIRPORT. The property benefits from a spacious lounge, fitted kitchen/dining room with separate utility, downstairs W.C/shower room, four well proportioned bedrooms, further bathroom, large secluded gardens to rear and side, off-street parking and garage. Available Immediately. Viewings Highly Recommended!

ROOM DESCRIPTIONS

FLOORPLAN



Total Area: 139.3 m² ... 1499 ft²

All measurements are approximate and for display purposes only.

127a, High Street, Staines-upon-Thames, TW18 4PD

01784 451458

staines@gregory-brown.co.uk