



21 JACKMANS PLACE,
LETCHWORTH, SG6 1RE

Lane &
BENNETTS



21 Jackmans Place
Letchworth Garden City
Hertfordshire
SG6 1RE

Lane & Bennetts are pleased to present this super Semi-Detached family home, located close to town and amenities, splendidly re-modelled by our vendors, matching character of the 1920's with today's modern convenience. Offering three double bedrooms, stunning fitted kitchen diner with fitted appliances* and peninsula breakfast bar, family/office space with garden views, a large dual aspect lounge with feature fireplace and new utility area with cloakroom. The property benefits from a South East facing rear garden. On the first floor there is a luxurious family bathroom suite. Effortlessly stylish, with quality fittings, fine flooring and complimentary decor throughout. The location of this property is key, being close to the town centre and station, as well as schools, retail areas and sports facilities, in a small collection of older style property tucked away nicely in the corner.

The estate agents that bring you: **KNOWLEDGE. INTEGRITY. RESULTS.**

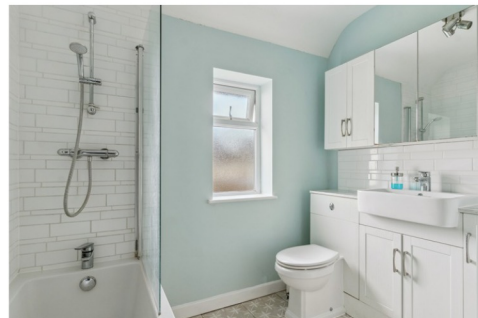
**Lane &
BENNETTS**

EARLY GARDEN CITY THREE DOUBLE BEDROOM SEMI-DETACHED FAMILY HOME, CENTRALLY LOCATED FOR ALL AMENITIES

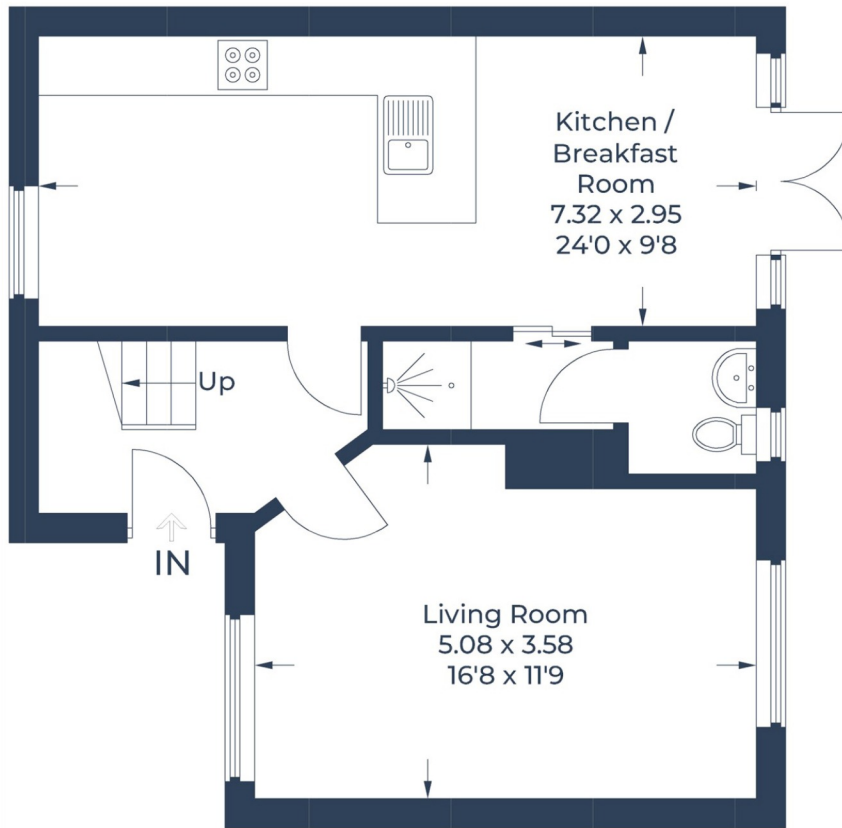


KEY FEATURES

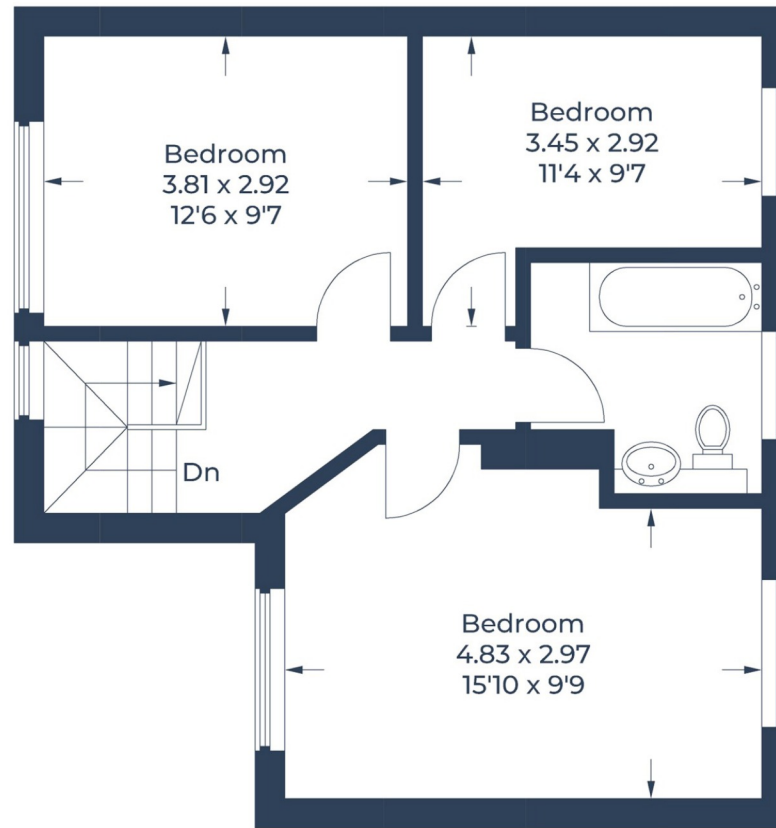
- BEAUTIFULLY FITTED KITCHEN DINER
- FAMILY SPACE WITH ACCESS TO REAR GARDEN
- STUNNING RE-MODELLING OF A SEMI-DETACHED FAMILY HOME
- LARGE DUAL ASPECT SITTING ROOM
- BEAUTIFULLY PRESENTED & MAINTAINED
- EPC: D | COUNCIL TAX BAND: C | FREEHOLD



Approximate Gross Internal Area
 Ground Floor = 50.5 sq m / 543 sq ft
 First Floor = 49.5 sq m / 533 sq ft
 Total = 100.0 sq m / 1,076 sq ft



Ground Floor



First Floor

Illustration for identification purposes only,
 measurements are approximate, not to scale.
 © CJ Property Marketing Produced for Lane & Bennetts



rightmove 
 find your happy



See all our properties at


IMPORTANT NOTICE:
 THE CONSUMER PROTECTION REGULATIONS 2008 & THE BUSINESS PROTECTION FROM MISLEADING MARKETING REGULATIONS 2008. Please note that we have not tested any apparatus, equipment, fixtures, fittings or services, and so cannot verify they are in working order or fit for their purpose. The agent has not had sight of the Title documents. References to the tenure are based on information supplied by the seller. A buyer is advised to obtain verification from their solicitor or surveyor. Furthermore solicitors should confirm that items described in the sales particulars are included in the sale since circumstances can change during marketing or negotiations. A final inspection prior to exchange of contracts is also recommended. Although we try to ensure accuracy, measurements used in this brochure are approximate, and prospective purchasers should check the accuracy of the measurements themselves.