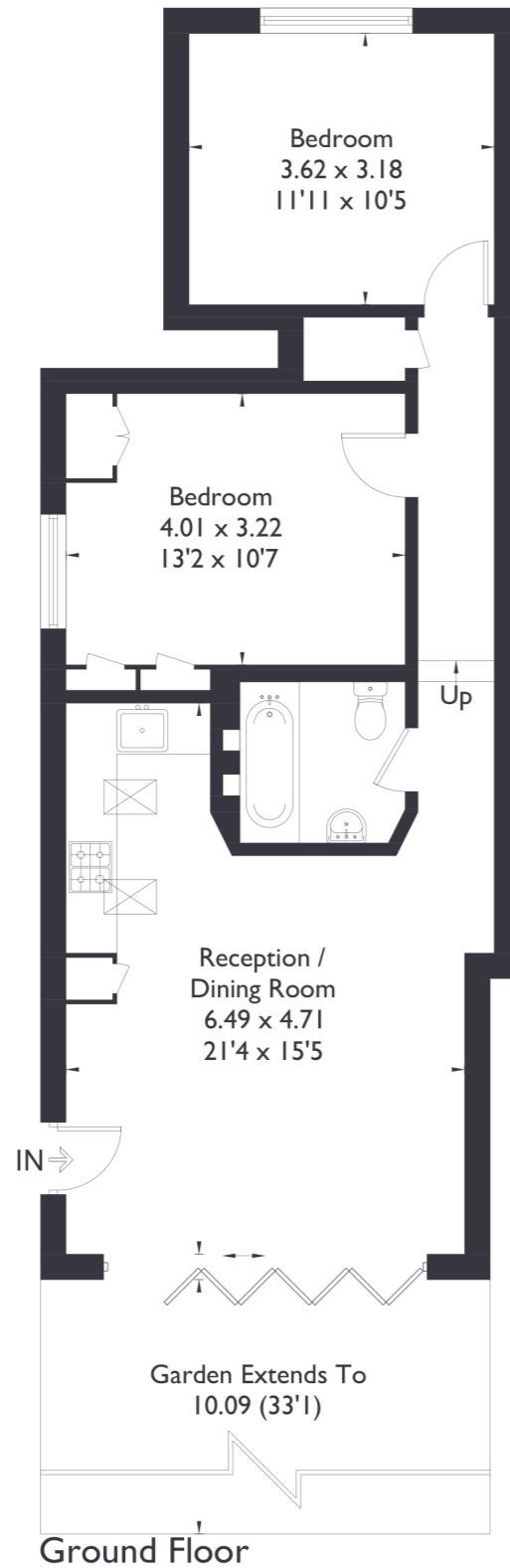


St. Margarets Road , W7

Approximate Floor Area = 64.4 sq m / 693 sq ft



2 BEDROOM FLAT

St Margaret's Road, W7

£499,950

This large, modern two double bedroom ground floor maisonette is set in an idyllic location just moments from Hanwell flight of locks on The Grand Union Canal. The property has side access and is bright, spacious and is surrounded by green space and parks while still within easy reach of local shops, bus routes, Hanwell Station and Boston Manor Piccadilly Line Station.

FEATURES

- Chain Free
- Two Bedrooms
- One Bathroom
- Private Garden With Side Access
- St Mark's Primary School
- Hanwell Station (Elizabeth Line)
- Extended Lease
- EPC Rating C



3 BEDROOM FLAT

St Margaret's Road, W7 £499,950

This large, modern two double bedroom ground floor maisonette is set in an idyllic location just moments from Hanwell flight of locks on The Grand Union Canal. The property is bright, spacious and is surrounded by green space and parks while still within easy reach of local shops, bus routes, Hanwell Mainline Station and Boston Manor Piccadilly Line Station.

The property itself is a fantastic size, incorporating an open kitchen/living area with bi-folding doors leading out on to the beautifully maintained, peaceful garden. There are two large double bedrooms as well as a well designed, contemporary bathroom.

EPC Rating C.

