



T: 01909 509001  
E: [info@bartropanddilks.co.uk](mailto:info@bartropanddilks.co.uk)  
W: [www.bartropanddilks.co.uk](http://www.bartropanddilks.co.uk)  
A: 78 Bridge Street, Worksop, S80 1JA

FOR SALE

£155,000

50 Keswick Road, Worksop, Nottinghamshire. S81 7PT



Of possible interest for first time buyers is this attractively presented and well decorated three bedroom semi detached home that has gas central heating and uPVC double glazed windows. Viewing is highly recommended to appreciate the high quality of fixtures and fittings on offer with the property being well placed for local amenities and schools. The accommodation comprises of; entrance hallway, lounge, excellent fitted kitchen with split level cooker and integrated washing machine, archway to the dining area. On the first floor; landing, three bedrooms, white fitted modern bathroom. Outside; attractive front and rear gardens, the rear being a generous size and enclosed, driveway to the side. Viewing advised.



## Ground Floor

### Entrance Hallway

With entrance door, central heating radiator, stairs to the first floor.

### Lounge 3.97m x 3.95m (13' 0" x 13' 0")

With a rear facing window, central heating radiator.

### Kitchen 3.96m x 3.26m (13' 0" x 10' 8")

With an excellent range of fitted wall and base units, worksurfaces, sink unit, electric hob, oven and extractor, integrated washing machine, fridge and freezer space, front and side facing windows, central heating radiator, storage with the boiler, ceramic tiled floor, archway to the dining area.

### Dining Area 3.07m x 1.83m (10' 1" x 6' 0")

With a rear facing window, door to the side, ceramic tiled floor.

## First Floor

### Landing

With a front facing window, storage that has a central heating radiator. loft access.

### Bedroom One 3.59m x 3.30m (11' 9" x 10' 10")

With a rear facing window, central heating radiator, storage.

### Bedroom Two 3.19m x 2.98m (10' 6" x 9' 9")

With a rear facing window, central heating radiator, storage.

### Bedroom Three 2.61m x 2.57m (8' 7" x 8' 5")

With a front facing window, central heating radiator.

### Bathroom

Modern white suite with panelled bath, wash hand basin, low flush w.c, two side facing windows, central heating radiator, tiling.

## Outside

### Gardens

Front and rear lawned gardens. The rear being a generous size and enclosed with garden shed.

### Driveway

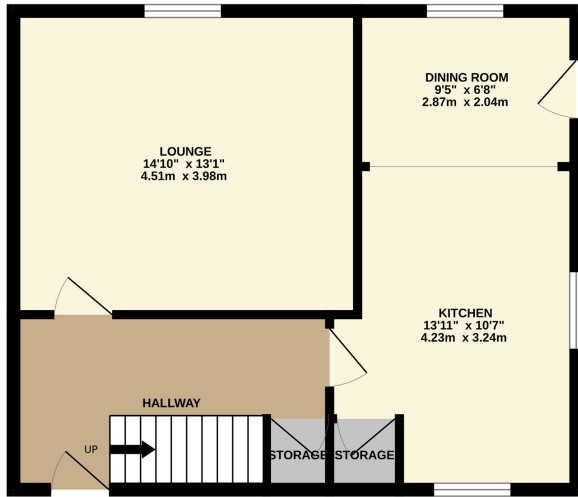
To the side.



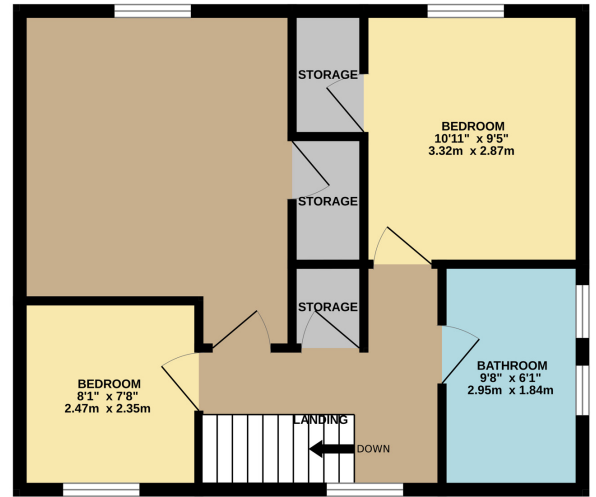




GROUND FLOOR



1ST FLOOR



Whilst every attempt has been made to ensure the accuracy of the floorplan contained here, measurements of doors, windows, rooms and any other items are approximate and no responsibility is taken for any error, omission or mis-statement. This plan is for illustrative purposes only and should be used as such by any prospective purchaser. The services, systems and appliances shown have not been tested and no guarantee as to their operability or efficiency can be given.  
Made with Metropix ©2025