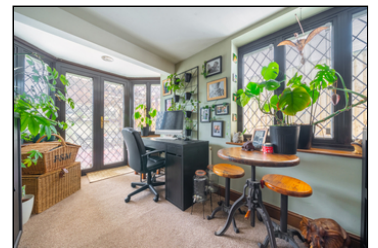


## Watersplash Road, Shepperton, TW17 0EW

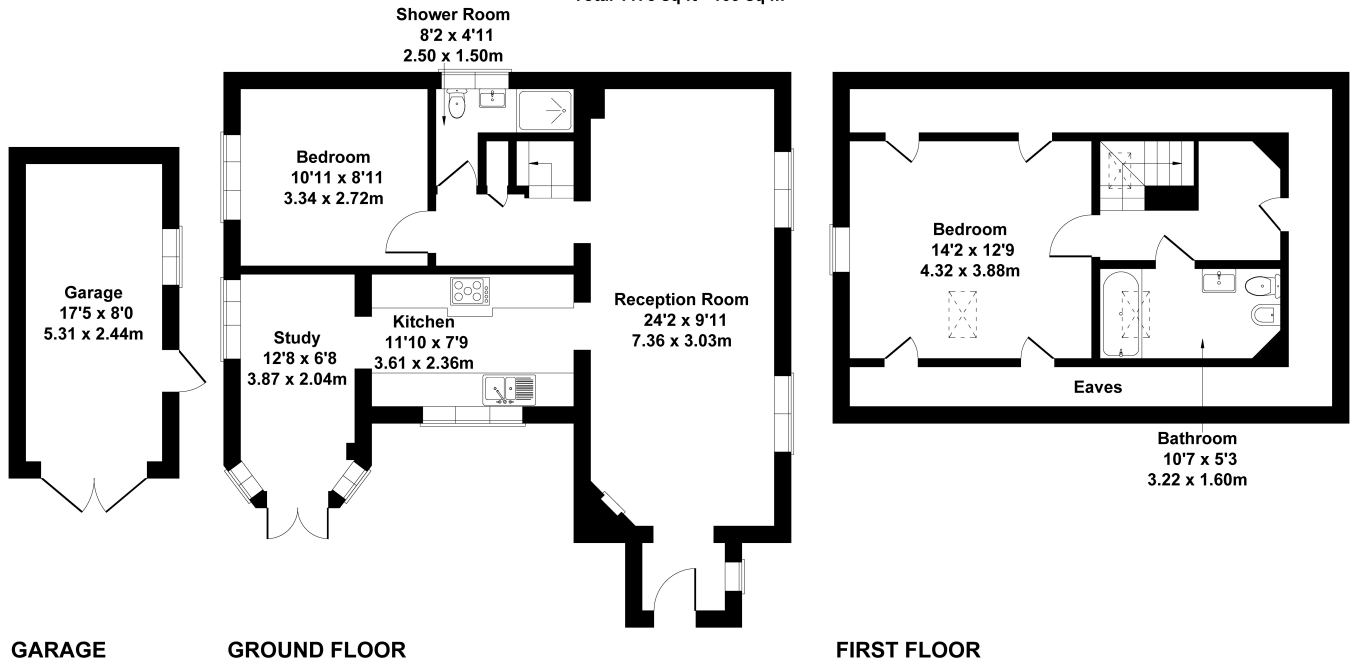
**Guide Price £475,000**



- Detached
- Modern Kitchen With Intergrated Appliances
- Detached Garage
- Two Bathrooms
- Two Double Bedrooms
- Private Garden
- Private Driveway
- Study

## Watersplash Road, Shepperton, TW17 0EW

Approximate Gross Internal Area  
Main House 1033 sq ft - 96 sq m  
Garage 140 sq ft - 13 sq m  
Total 1173 sq ft - 109 sq m



This floorplan is for guidance only and does not form part of an offer or contract.  
Buyers or tenants should verify all details through inspection, searches, and surveys.  
Measurements are approximate and should not be relied upon for valuation or transactions.  
Produced by Plan Portal.  
[www.evolveLondon.co.uk](http://www.evolveLondon.co.uk)

We have not tested the services or domestic appliances so we cannot verify that they are in working order. The buyer is advised to obtain verification from their solicitor or surveyor. These particulars form no part of any offer or contract and their accuracy cannot be guaranteed.