

FOR
SALE



Orient House, Cobden Street, Kettering, Northamptonshire NN16 8DX

£27,500 - Leasehold

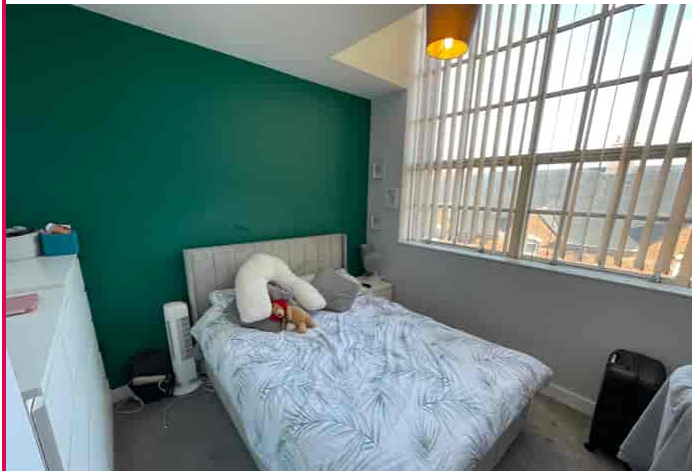
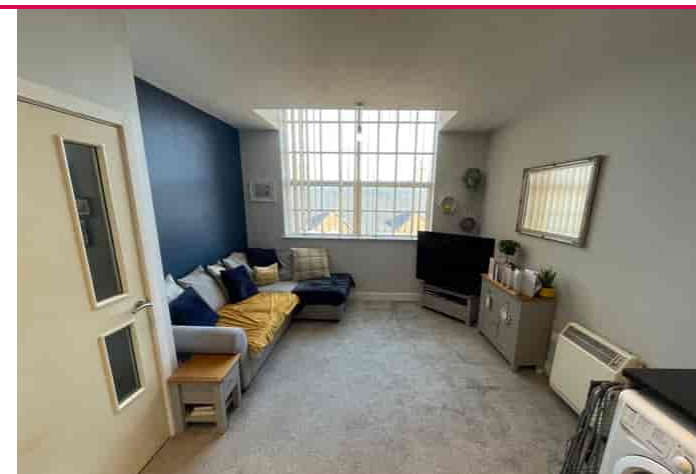
77, Main Street, Broughton Astley, Leicester, LE9 6RE 01455 285555 sales@davidrobinsonestates.co.uk

PROPERTY DESCRIPTION

Great Step On The Ladder! - With this 25% shared ownership flat which has modern accommodation comprising communal entrance hall with lift and stairs, entrance hall, open plan living dining kitchen, double bedroom and bathroom. The property benefits from double glazing and electric heaters with allocated parking. Internal viewing is considered essential to appreciate the level of accommodation on offer.

POINTS OF INTEREST

- *Flat*
- *25% Share*
- *Open Plan Living Kitchen Diner*
- *Double Bedroom*
- *Bathroom*
- *Allocated Parking*



ROOM DESCRIPTIONS

Ground Floor

Communal Entrance Hall

With access to stairs and lift to all floors.

Second Floor

Entrance Hall

Door to the front aspect, built in cupboard, built in airing cupboard and electric heater.

Open Plan Living Dining Kitchen

18' 5" x 12' 7" (5.61m x 3.84m) Double glazed window to the rear aspect, being fitted with a range of wall and base units with built in oven, hob, extractor, sink/drainage, plumbing for washing machine and electric heater.

Double Bedroom

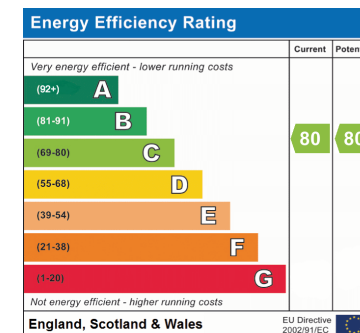
10' 9" x 11' 1" (3.28m x 3.38m) Double glazed window to the rear aspect.

Bathroom

Being fitted with three piece suite comprising, low level wc, hand wash basin, bath with shower over and heated towel rail.

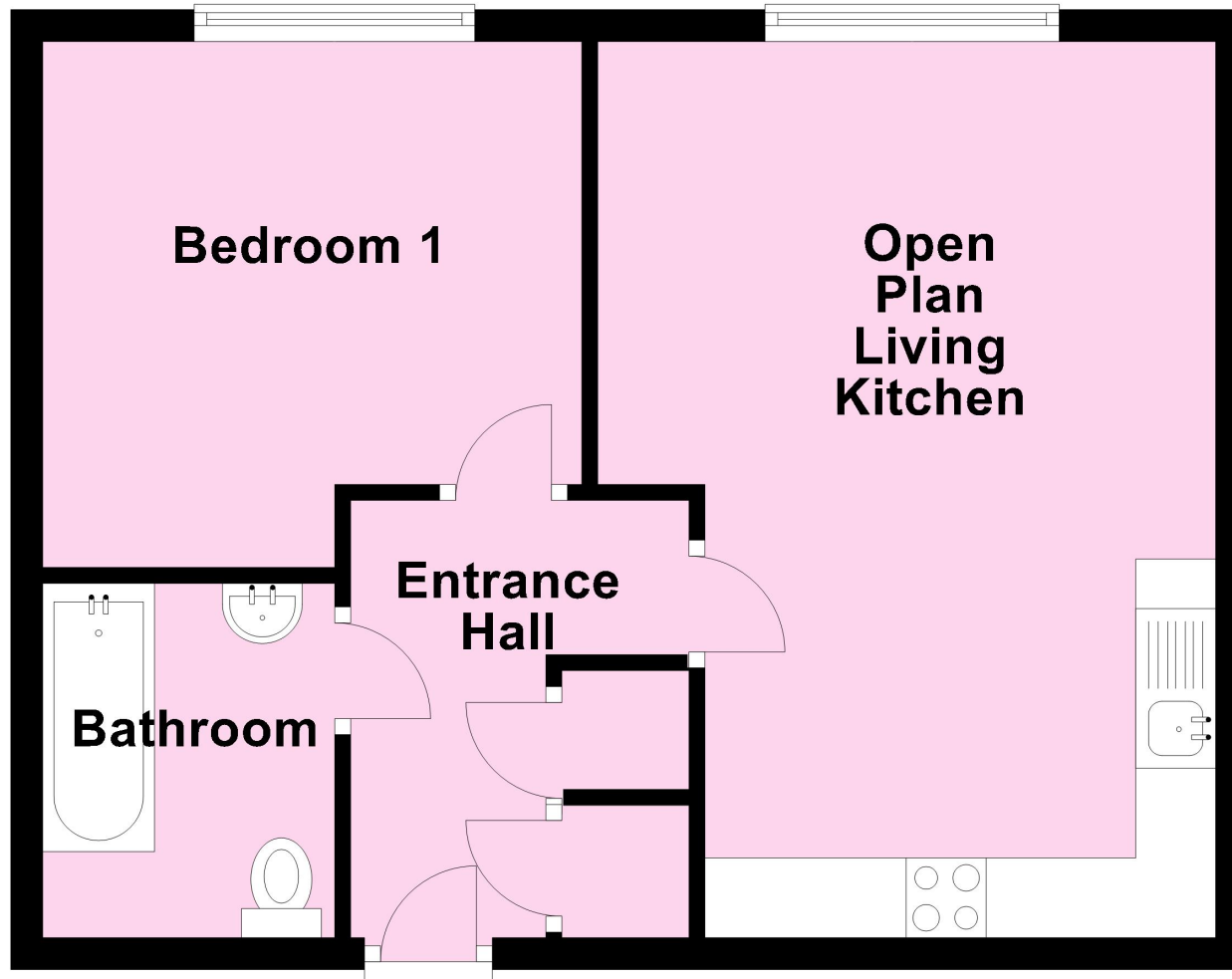
Outside

To the rear of the property there is allocated parking.



Ground Floor

Approx. 41.2 sq. metres (443.6 sq. feet)



Total area: approx. 41.2 sq. metres (443.6 sq. feet)