



A charming and exceptionally presented cottage-style family home situated in the desirable village of Datchet. This two double-bedroom property offers the perfect blend of traditional character and modern convenience.

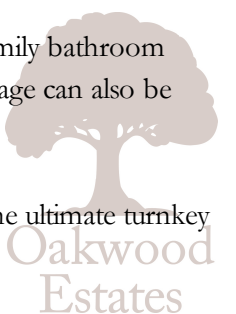
Lawn Cottage is nestled back from the road, providing driveway parking and an enclosed south-facing private rear garden. The garden includes a large patio area alongside an easy-care astro turf lawn — ideal for relaxing or entertaining.

Upon entering, you're immediately impressed by the warmth and style this home exudes — it truly offers a lifestyle as well as a residence.

The dual-aspect traditional country-style kitchen with informal dining is equipped to a high standard, featuring a range cooker that complements the character perfectly. Moving towards the rear, the bright living room retains original features such as a period fireplace, sash windows, and a patio door, creating a cozy yet elegant space. The second reception room, over 11 feet in length and currently set up as a formal dining room, benefits from natural light through a front-facing sash window and can easily serve as a second living area.

Upstairs, you'll find two double bedrooms decorated and furnished to a high standard. The four-piece family bathroom enhances the home's charm with a traditional free-standing roll-top bath and separate shower. Ample storage can also be found within the under-stairs and walk-in cupboards, as well as built-in storage and loft space.

Offered with no onward chain, this property has broad appeal to both upsizers and downsizers seeking the ultimate turnkey home.






Property Information

-  CHARMING 2-BEDROOM COTTAGE STYLE HOME
-  EXCEPTIONALLY PRESENTED THROUGHOUT
-  COUNTRY STYLE KITCHEN
-  TWO RECEPTION ROOMS
-  BLEND OF PERIOD AND MODERN FINISHES
-  DRIVEWAY PARKING
-  OFFERED WITH NO ONWARD CHAIN




x2

Bedrooms



x2

Reception Rooms



x1

Bathrooms



x2

Parking Spaces



Y

Garden



N

Garage

Location

Datchet is a charming riverside village offering a range of local shops, pubs, and cafés, with Windsor just minutes away. Excellent transport links include direct trains to London Waterloo and easy access to the M4, M25, and Heathrow Airport. The area boasts well-regarded schools, riverside walks, and nearby Windsor Great Park, combining village charm with commuter convenience.

Transport Links

Datchet railway station provides direct trains to London Waterloo in under an hour. The village has easy access to the M4 and M25 motorways, and Heathrow Airport is a short drive away. Windsor and Slough stations offer additional services, including the Elizabeth Line. Local bus routes connect Datchet with nearby towns.

Schools

Primary Schools

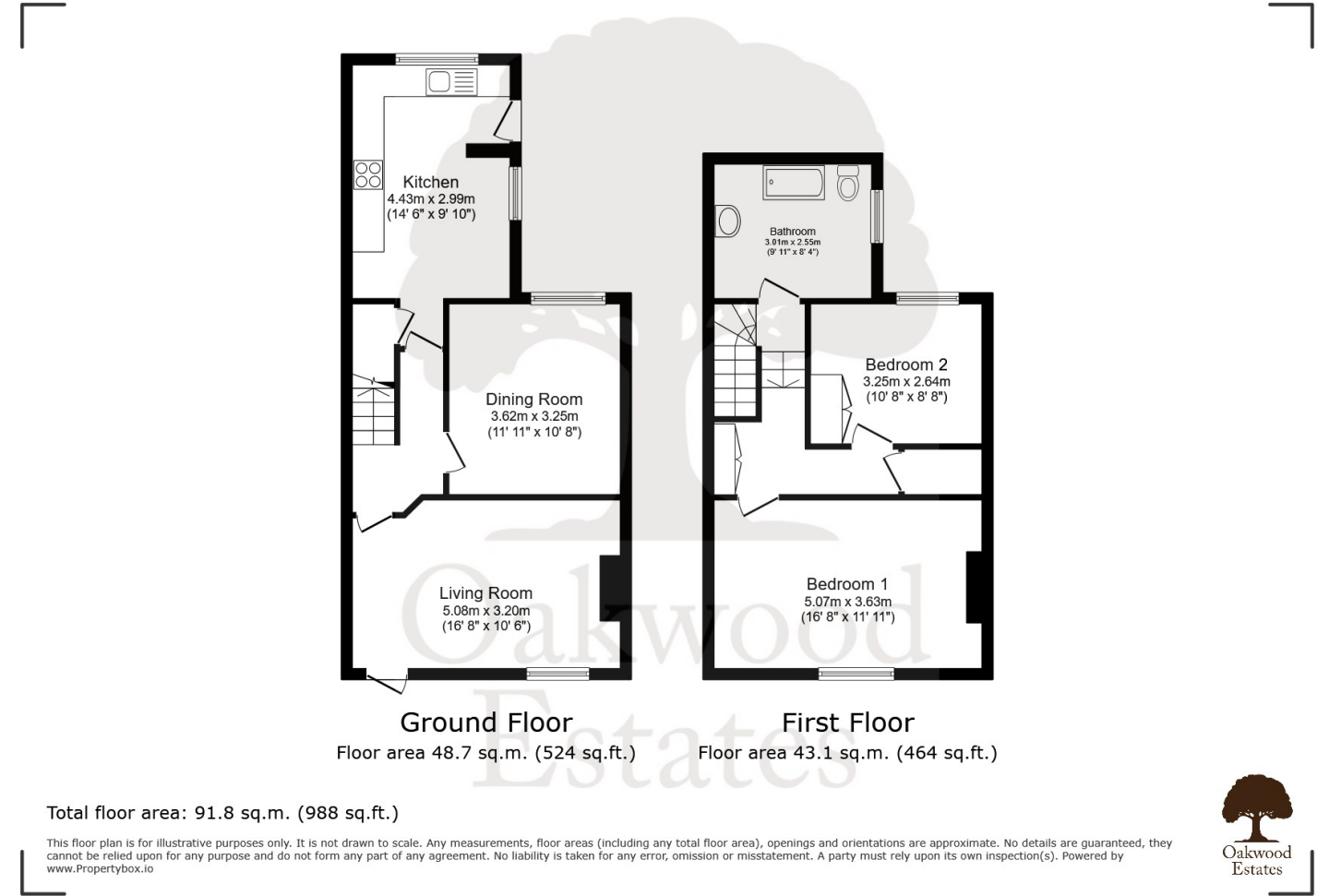
- Datchet St Mary's CE Primary School – Located in the heart of Datchet
- Eton End School – Independent, co-ed primary
- Wraysbury Primary School

Secondary Education

Churchmead Church of England (VA) School – The main secondary school serving Datchet.

- Local Grammar Schools
- Langley Grammar School
- Upton Court Grammar School

Floor Plan



Prospective purchasers should be aware that these sales particulars are intended as a general guide only and room sizes should not be relied upon for carpets or furnishing. We have not carried out any form of survey nor have we tested any appliance or services, mechanical or electrical. All maps are supplied by Goview.co.uk from Ordnance Survey mapping. Care has been taken in the preparation of these sales particulars, which are thought to be materially correct, although their accuracy is not guaranteed and they do not form part of any contract.

