



**Murray Street  
Mansfield  
Nottinghamshire  
NG18**

**Offers In Excess Of £134,000**

**bettermove**

# Murray Street Mansfield

Bettermove are proud to present this 2 bedroom terraced house in Mansfield.

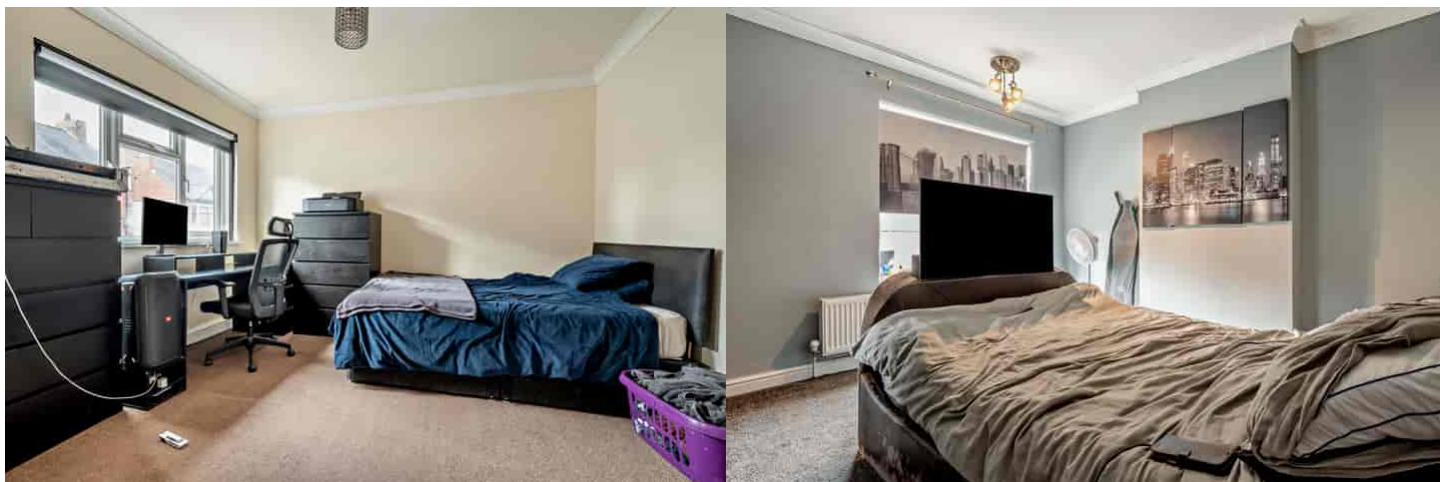
This property benefits from double glazing and gas central heating throughout, with on street parking available.

The council tax band is A.

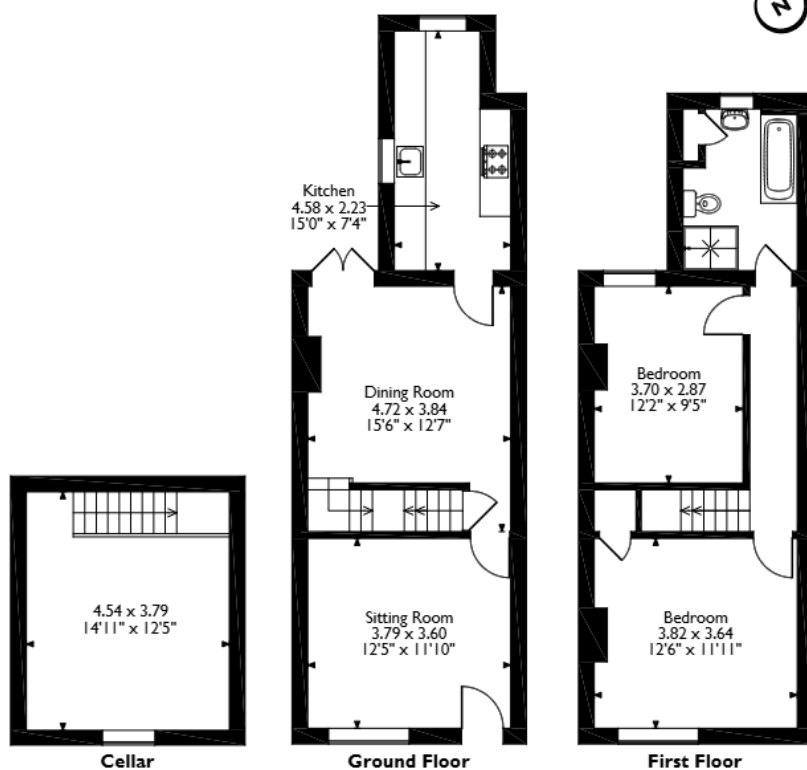
The interior of this beautifully presented property comprises a spacious living room, dining room and fitted kitchen on the ground floor, with access down to the cellar. The first floor consists of two double bedrooms and a family bathroom. The exterior boasts a rear private garden, perfect for enjoying the summer months.

Located in the popular town of Mansfield, the property is close to a range of amenities, including shops, supermarkets, restaurants and pubs. Excellent transport links can be found from Mansfield Railway Station, a variety of local bus routes, and close access to the A60.

This exciting opportunity should not be missed! All enquiries can be made through Bettermove on 0330 004 0050.



Murray Street, Mansfield, Nottinghamshire  
Approximate Gross Internal Area  
101 Sq M/1088 Sq Ft



Please note that the location of doors, windows and other items are approximate and this floorplan is to be used for illustrative purposes only. Unauthorized reproduction is prohibited.





20-22 Bridge End, Leeds, LS1 4DJ  
t: 0330 004 0050 e: [hello@bettermove.co.uk](mailto:hello@bettermove.co.uk)  
[www.bettermove.co.uk](http://www.bettermove.co.uk)