



4 Perdiswell Street, Worcester  
WR3 7HZ



A two bedroom Victorian home set to the north of the city, offered for sale with no onward chain.

The home is ideal for someone wanting a project & comprises; entrance hallway with access into the lounge, dining room & the stairs rise to the first floor landing.

From the dining room is access down to the cellar & into the kitchen, which in turn leads out to the garden.

To the first floor, the landing leads in to both double bedrooms & the bathroom.

Externally, there is a rear garden.

The property is walking distance of a local pub & shop & Worcester city is close by for a wider range of amenities to include bars, pubs, clubs, restaurants, cafes, shops, supermarkets, leisure facilities & two train stations with direct links to London.

NB; we do not know whether there are any rights of way that you or your neighbours benefit from, so you may wish to confirm this through the usual legal channels

FREEHOLD

Council Tax Band B - Worcester Council

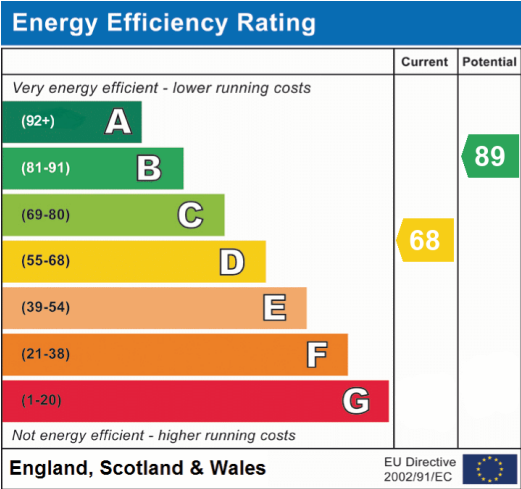






### Agents Note

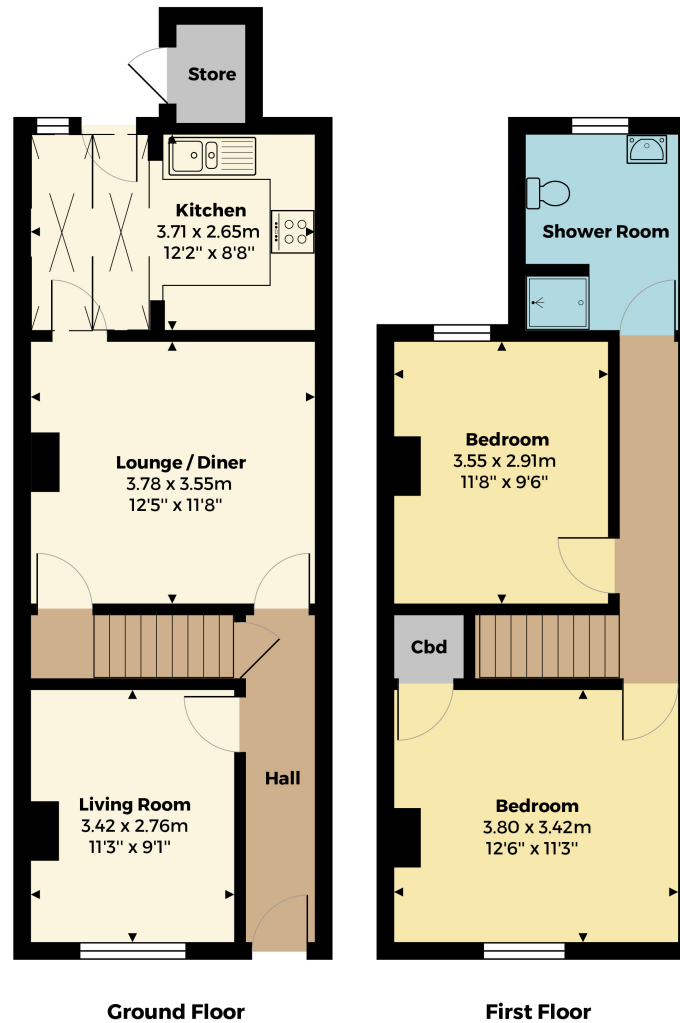
Please note that a Buyers Fee of £950 including VAT is payable at the point of an offer being accepted to Shelton & Lines. For terms and condions please see Shelton & Lines website under the Sales Tab and "Buyers Info" page.



### General Information

Whilst we endeavour to make our sales particulars fair, accurate and reliable, they are only a general guide to the property. Accordingly, if there is any point which is of particular importance to you please contact the office and we will be pleased to check the position for you, especially if you are travelling some distance to view the property. **FIXTURES AND FITTINGS** All items not specifically mentioned within these details are to be excluded from the sale. Any mention of services/appliances within these details does not imply they are in full and efficient working order and no testing has been done by the Agent.

All measurements are approximate and for display purposes only



[sheltonandlines.co.uk](http://sheltonandlines.co.uk)