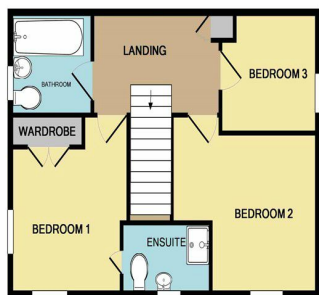




**Nottingham Deeping Meadow, Northfield Road, Market Deeping PE6 8QZ, £239,995**



GROUND FLOOR



1ST FLOOR



Backed by HM Government



\*\*\* THREE BEDROOM SEMI DETACHED HOUSE \*\*\* "Deeping Meadow is a range of brand new homes being built by a local builder. The development has a good access to all local amenities plus good road access to all neighbouring towns. The Nottingham will be a three bedroom semi detached home featuring an en suite to the main bedroom, kitchen / dining room and separate living room. First completions on this site are due by the final quarter of 2019, although dates are to be confirmed. EPC energy rating currently unavailable."

**DOOR INTO:**

**ENTRANCE HALL**

Stairs to first floor accommodation. Door to:

**LIVING ROOM**

10' 4" x 18' 6" (3.15m x 5.64m) (approx) To have a bay window to the side, window to the front.

**KITCHEN /DINING ROOM**

11' 9" x 18' 6" (3.58m x 5.64m) (approx) To be fitted with a range of units with worktop over, sink and hob with cooker hood over. To have windows to the front and side, French doors to the side. Door to under stair cupboard. Door to:

**CLOAKROOM**

To be fitted with a two piece suite comprising wash hand basin and WC.

**LANDING**

Airing cupboard.

**BEDROOM ONE**

10' 6" x 11' 9" (3.20m x 3.58m) (approx) (including wardrobe) To have windows to the front and side. To have a fitted wardrobe. Door to:

**EN SUITE**

To be fitted with a three piece suite comprising shower cubicle wash hand basin and WC. To have a window to the front.

**BEDROOM TWO**

11' 9" x 10' 2" (3.58m x 3.10m) (approx) To have a window to the front.

**BEDROOM THREE**

8' 2" x 8' (2.49m x 2.44m) (approx) To have a window to the side.

**BATHROOM**

To be fitted with a three piece suite comprising bath, wash hand basin and WC. To have a window to the side.

**GARAGE**

Single garage.

**OUTSIDE**

To the front a path leads to the front door with storm canopy over.

There will be gardens to the front and rear.

**LOCATION**

On leaving Market Deeping. Follow Church Street and Halfleet B1524 until reaching the roundabout. Take the 4th Exit on the roundabout onto Northfield Road and Deeping Meadow can be found on the right hand side.

**AGENT NOTE:**

The floor plan is for illustrative purposes only. Fixtures and fittings do not represent the current state of the property. Not to scale and is meant as a guide only.

**AGENTS NOTE:**

The details in this brochure are intended to give a general indication of the proposed development and floor plan layout and are not to scale. The illustrations of the development and interiors are artist impression only. The developer reserves the right to alter any part of the development, specification or floor layout at any time.

The contents herein shall not form any part of any contract nor is a representation inducing any such contract. Please confirm all details are correct before proceeding to purchase, incurring financial costs. All measurements are approximate and have been provided by the developer.