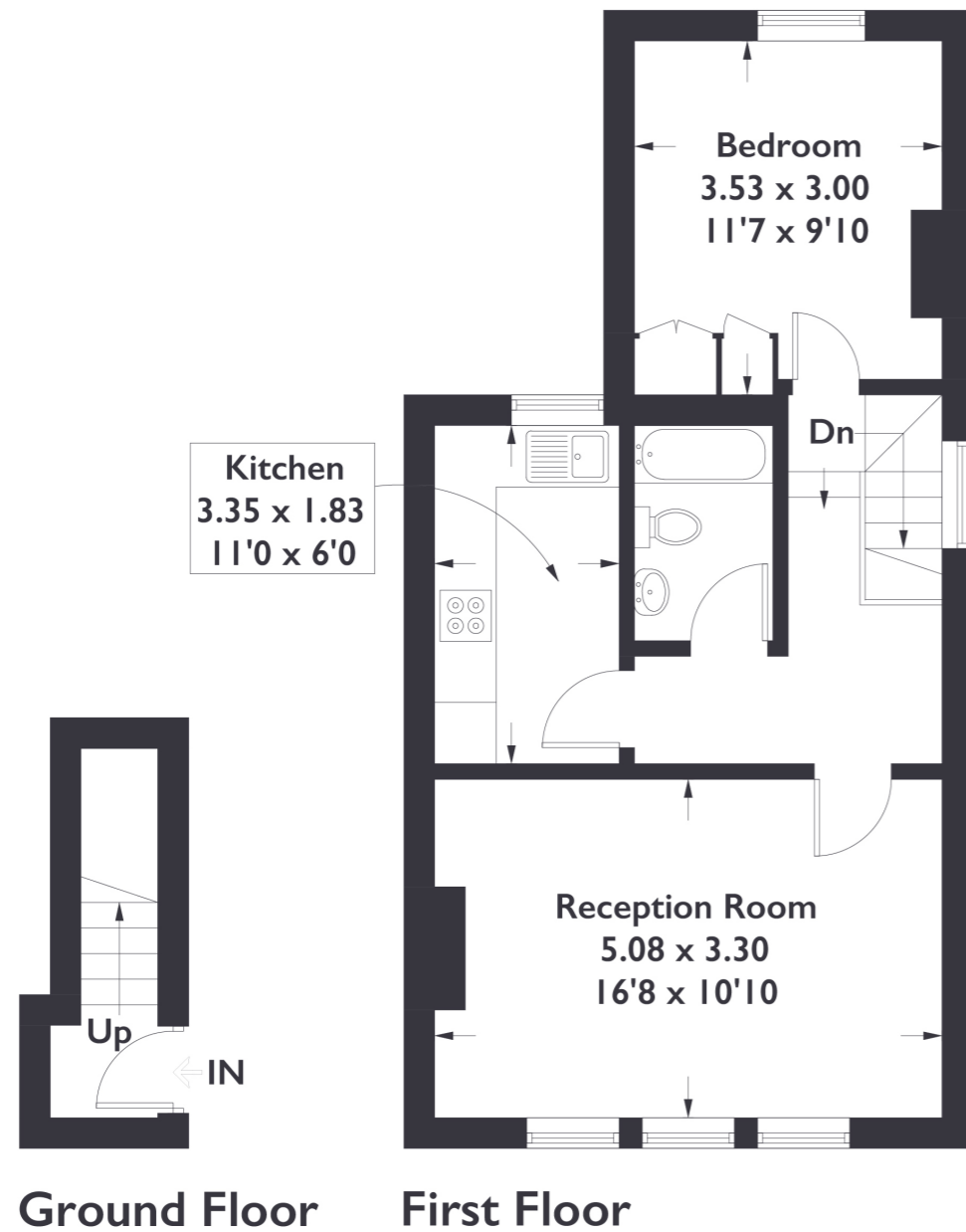


**Northcroft Road, W13**

Approximate Gross Internal Area = 49.2 sq m / 530 sq ft



Measured in accordance with RICS Code of Measuring Practice. To be used for identification and guidance purposes only. Whilst every care is taken in the preparation of this plan, please check all dimensions, shapes and compass bearings before making any decisions reliant upon them.



**1 BEDROOM FLAT**

**Northcroft Road, W13**

£395,000

This stunning one bedroom flat offers stylish and modern interiors and bright living spaces whilst being in the heart of Northfields. Northcroft Road offers convenient transport links to central London via the Piccadilly Line at Northfields Station and an array of shops, cafes and restaurants on your doorstep, with Ealing Broadway only a stones throw away.

**FEATURES**

- One Bedroom Flat
- Leasehold
- Period Features
- Potential To Extend Into Loft (STPP)
- High Ceilings And Working Fireplace
- Northfields Station (Piccadilly Line)
- Lammas And Walpole Park Nearby
- Energy Rating: C





1 BEDROOM FLAT

## Northcroft Road, W13

£395,000

With its own entrance, you are welcomed into a bright hallway flooded with natural light leading through into a generously sized reception room featuring a working gas fireplace, high ceilings and period features.

The kitchen is separate to the reception room, with the added benefit of ample amount of storage space. A large bedroom with built in storage space and a large family bathroom completes the property. The property also benefits from having the potential to extend into the loft (subject to planning permission).

Northcroft Road sits conveniently in the heart of Northfields whilst being just a stones throw away from all of the amenities that Ealing Broadway has to offer with a short walk through Lammas and Walpole park. The location also boasts being approximately a five minute walk to Northfields Station (Piccadilly Line) and offers easy access into central London.

