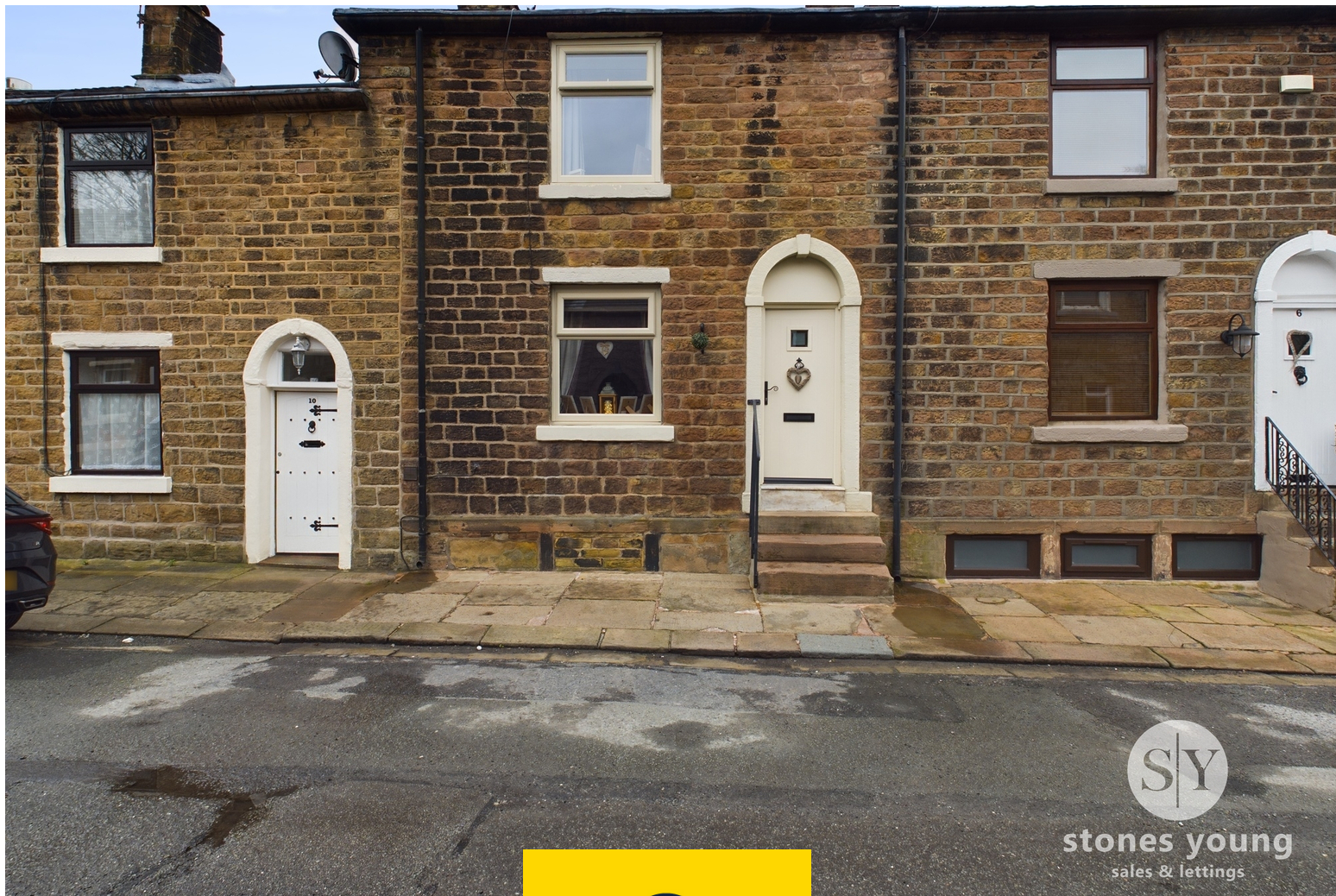


West View Place, Blackburn, Lancashire. BB2 6JG

£124,950 Freehold

FOR SALE



stones young
sales & lettings



stones young
sales & lettings

Blackburn
740, Whalley New Road, Blackburn, BB1 9BA

01254 682 470
enquiries@stonesyoung.co.uk

PROPERTY DESCRIPTION

A CHARMING COTTAGE WITH RUSTIC ALLURE A timeless property where the exterior boasts a traditional stone facade.

Step through the front door, and you find yourself in the heart of the cottage, a cozy lounge that emanates a welcoming ambiance. The focal point of this room is the inglenook fireplace, its crackling flames casting a comforting glow across the exposed beams and stone walls. Plush furnishings invite you to sink into relaxation, creating a perfect haven to unwind. Adjacent to the lounge, the kitchen beckons with its classic charm. Traditional units line the walls, showcasing craftsmanship that stands the test of time. Wood effect countertops enhance the rustic aesthetic, providing a functional space for culinary endeavors. Sunlight streams through the small windows, illuminating the kitchen and giving it an airy feel. This cottage offers two bedrooms, each uniquely adorned with quaint decor and cozy linens. The ambiance is both intimate and inviting, creating a sense of tranquility that envelops you as you retire for the night. The bathroom, though modest in size, is a sanctuary of comfort. Tasteful tiling a harmonious blend of modern convenience and rustic aesthetics.

A surprising feature lies beneath the surface – a cellar, adding an intriguing element to the cottage. This space serves various purposes, whether it be for storage, a wine cellar, or a cozy nook for hobbies. Its stone walls and low ceilings create a unique atmosphere that harks back to a bygone era. With its traditional elements and timeless appeal.

FEATURES

- Two Bedrooms
- New Front Windows & Front Door
- Stunning Rear Garden
- Quiet Location
- Built in 1800's
- Freehold Tenure
- Inglenook Fireplace with Log Burner
- Gorgeous Cottage



ROOM DESCRIPTIONS

Ground Floor

Lounge

11' 08" x 15' 00" (3.56m x 4.57m)

Carpet flooring, stairs to first floor, composite front door, inglenook fire place with multi fuel stove, x2 panel radiators, TV point, double glazed upvc window.

Kitchen

6' 05" x 15' 00" (1.96m x 4.57m)

Range of fitted wall and base units with contrasting work surfaces, laminate flooring, x5 ring gas hob, electric oven, extractor fan, stainless steel sink and drainer, plumbed for washing machine, space for fridge freezer, ceiling spot lights, double glazed upvc window, wooden door to the rear garden, panel radiator.

First Floor

Landing

Carpet flooring.

Bedroom One

10' 04" x 8' 09" (3.15m x 2.67m)

Double bedroom with carpet flooring, storage cupboard, double glazed upvc window, panel radiator.

Bedroom Two

9' 03" x 6' 06" (2.82m x 1.98m)

Single bedroom with carpet flooring, fitted wardrobes, loft access, double glazed upvc window, panel radiator.

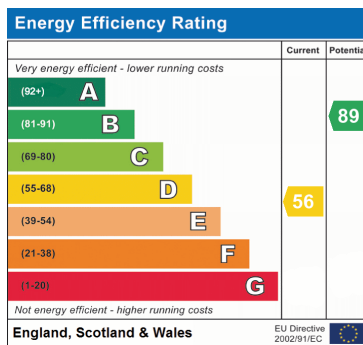
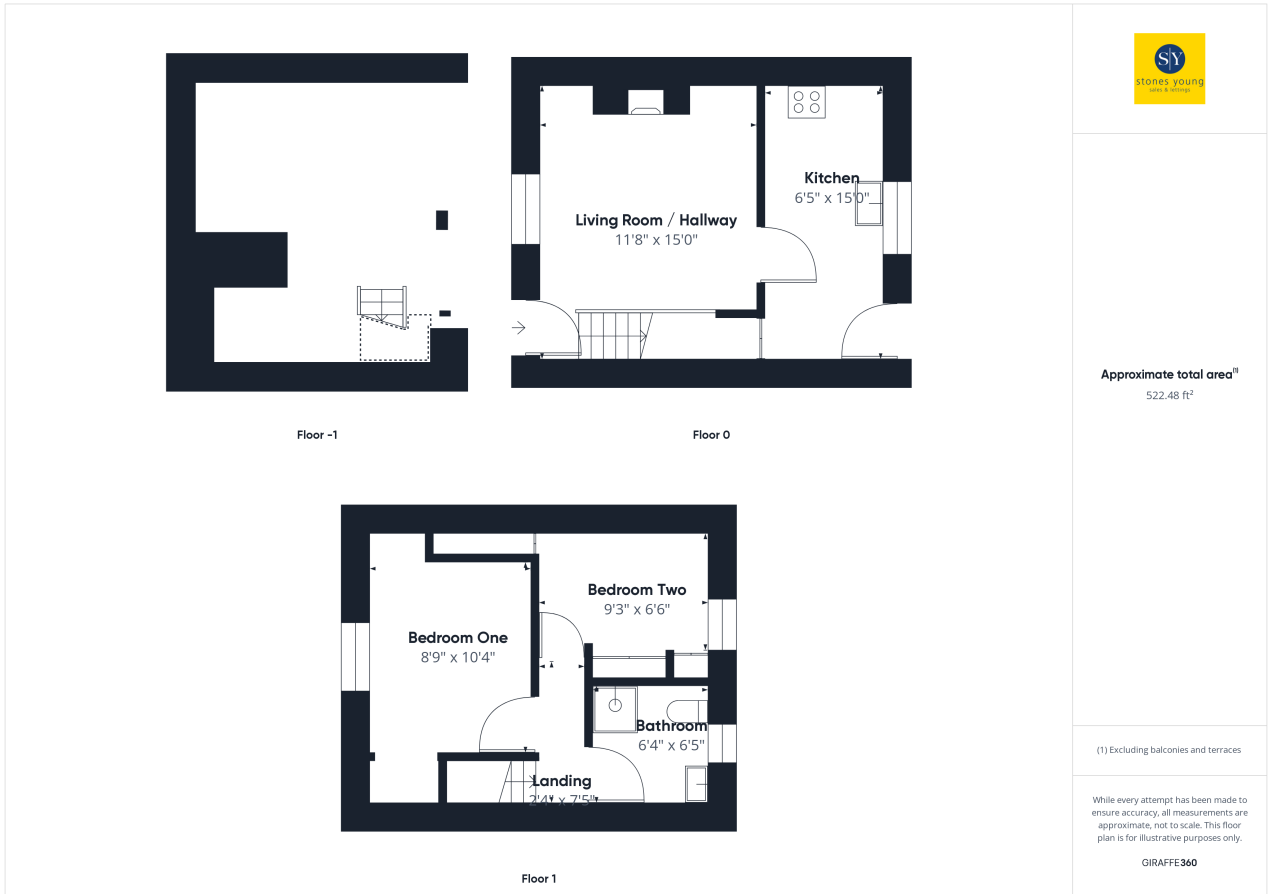
Bathroom

6' 04" x 6' 05" (1.93m x 1.96m)

Tiled flooring, three piece in white with electric shower enclosure, tiled floor to ceiling, heated towel radiator, frosted double glazed upvc window.



FLOORPLAN & EPC



These particulars are intended to give a fair and reliable description of the property but no responsibility for any inaccuracy or error can be accepted and do not constitute an offer or contract. We have not tested any services or appliances (including central heating if fitted) referred to in these particulars and the purchasers are advised to satisfy themselves as to the working order and condition. If a property is unoccupied at any time there may be reconnection charges for any switched off/disconnected or drained services or appliances. All measurements are approximate.