

Wylve Road

Warminster, BA12 9PE

COOPER
AND
TANNER



£285,000 Freehold

🛏️ 2 🛋️ 1 🚿 1 EPC D

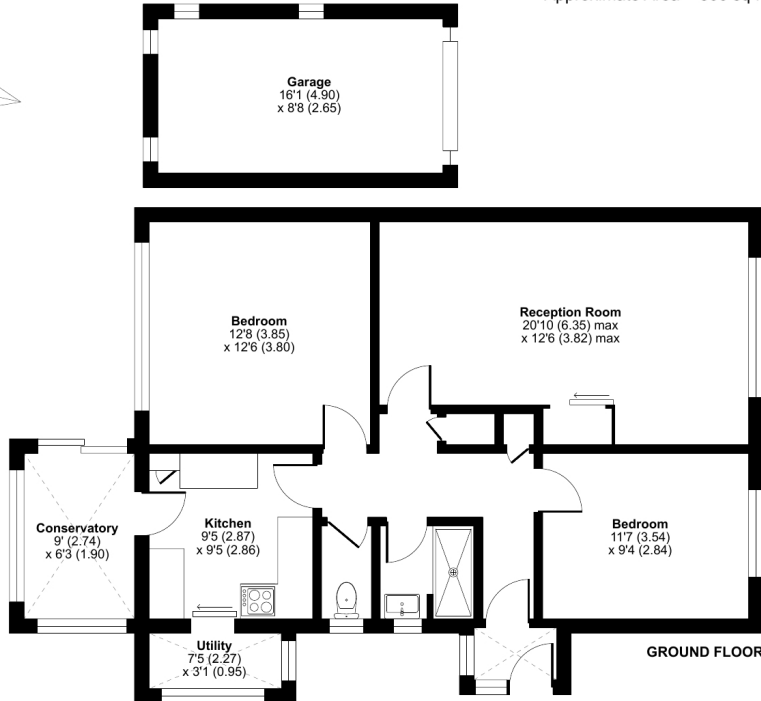
Description

This two bedroom detached bungalow is offered for sale with NO ONWARD CHAIN. It is located in the sought after location of Wylve Road and is within easy walking distance of countryside and riverside walks. The property benefits from a fitted kitchen, a lounge/dining room, lean to conservatory, separate shower room and cloakroom and two bedrooms. At the rear of the property there is a fully enclosed garden which is easy maintainable. It benefits from a long driveway offering parking for three cars, this then leads to a garage.

Wylve Road, Warminster, BA12

Approximate Area = 866 sq ft / 80.4 sq m (includes garage)
Garage = 140 sq ft / 13 sq m
Total = 1006 sq ft / 93.4 sq m

For identification only - Not to scale



Denotes restricted head height

Floor plan produced in accordance with RICS Property Measurement 2nd Edition, incorporating International Property Measurement Standards (IPMS2 Residential). © nichecom 2025. Produced for Cooper and Tanner. REF: 1231302



Features

- Detached bungalow
- Kitchen
- Lounge/dining room
- Separate shower room and cloakroom
- Lean to conservatory
- Two bedrooms
- Garage & driveway parking
- No onward chain
- Close to countryside walks

Local Information

- Council Tax Band C
- Tenure Freehold
- EPC Rating D

WARMINSTER OFFICE

Telephone 01985 215579

48-50, Market Place, Warminster, Wiltshire BA12 9AN

warminster@cooperandtanner.co.uk

**COOPER
AND
TANNER**

Important Notice: These particulars are set out as a general outline only for the guidance of intended purchasers and do not constitute, nor constitute part of, an offer or contract. All descriptions, dimensions, reference to condition and necessary permissions for use and occupation, warranties and other details are given without responsibility and any intending purchasers should not rely on the m as statements or representations of fact but must satisfy themselves by inspection or otherwise as to the correctness of each of them.

